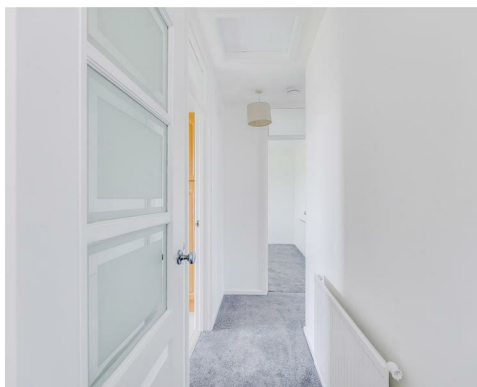
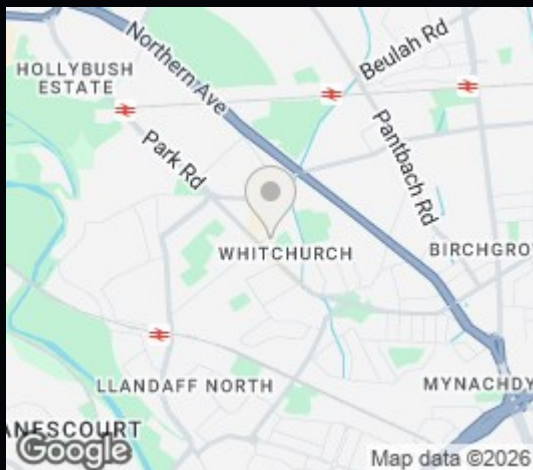


Rialto Court, Old Church
Road,
Cardiff,
CF14 1AJ

2 Bed Maisonette

£1,200



An impressive two bedroom apartment on the first floor of this private development in the heart of Whitchurch village. Immaculately presented and benefitting from decoration and new flooring throughout, this most convenient of properties has pleasant views over playing fields and is a short walk to the shops/pubs and restaurants that surround. Unfurnished. Gas central heating. Off road parking. Council tax band D. EPC rating C. Available February 2026 for minimum initial twelve month term.



2



1



1



C

£1,200

CONTACT

EMAIL

lettings@thomashwood.com

TELEPHONE

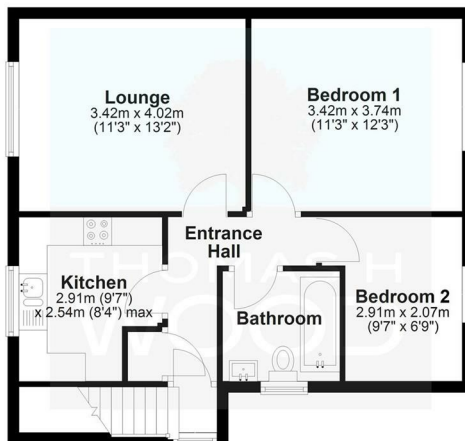
02920 626252

WEBSITE

Energy Efficiency Rating		
	Current	Potential
Very energy efficient - lower running costs		
(92 plus) A		
(81-91) B		
(69-80) C	71	75
(55-68) D		
(39-54) E		
(21-38) F		
(1-20) G		
Not energy efficient - higher running costs		
England & Wales	EU Directive 2002/91/EC	

Ground Floor

Approx. 47.7 sq. metres (513.5 sq. feet)



Total area: approx. 47.7 sq. metres (513.5 sq. feet)