

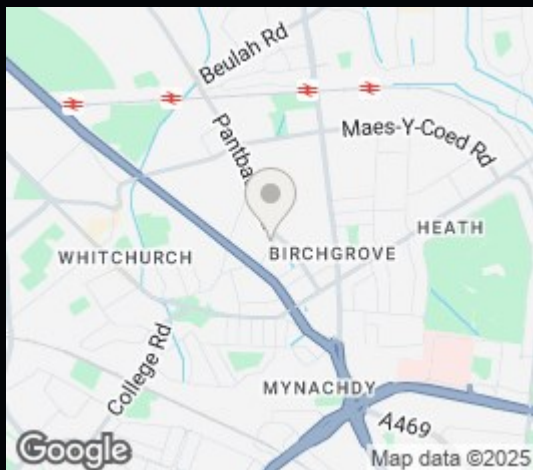
THOMAS H  
WOOD

37, Greenfield Road,  
Rhiwbina,  
Cardiff,  
CF14 1TE

3 Bed House - Semi-  
Detached

£1,400 PCM





An attractive three bedroom semi detached property offering ample off road parking to the front with enclosed low maintenance rear garden. Well designed and spacious, the property has a quality finish with appealing kitchen, oak flooring and fitted bedroom furniture. Accommodation is laid out to include the living area, kitchen, shower room and bedroom 1 to the ground floor with a further two bedrooms and bathroom to the first floor. Partially furnished to include kitchen appliances, one double bed and fitted wardrobes. Within 1km of the villages of Rhiwbina and Birchgrove. Off road parking. Gas central heating. Council Tax band F. EPC rating C. Available June 2025 for minimum twelve month term.



3



2



2



B

£1,400 PCM

CONTACT

EMAIL

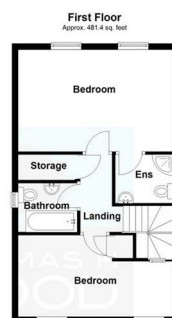
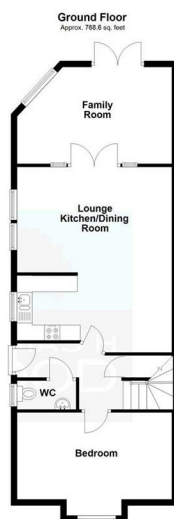
[lettings@thomashwood.com](mailto:lettings@thomashwood.com)

TELEPHONE

02920 626252

WEBSITE

Energy Efficiency Rating		
	Current	Potential
Very energy efficient - lower running costs		
(92 plus) <b>A</b>		<b>93</b>
(81-91) <b>B</b>	<b>85</b>	
(69-80) <b>C</b>		
(55-68) <b>D</b>		
(39-54) <b>E</b>		
(21-38) <b>F</b>		
(1-20) <b>G</b>		
Not energy efficient - higher running costs		
<b>England &amp; Wales</b>	EU Directive 2002/91/EC	



Total area: approx. 1250.0 sq. feet