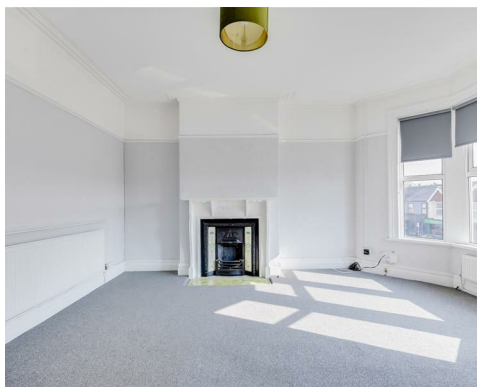
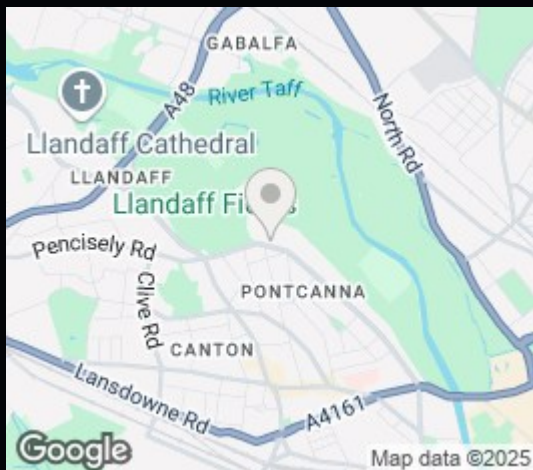


28, Maldwyn Street,
Pontcanna,
Cardiff,
CF11 9JR

2 Bed Flat - First Floor

£975 PCM



*** PRIME LOCATION *** - This is a super two double bedroom apartment, with garden, on the first floor of a converted period property situated favourably across from the local cafes, shops and bars of Pontcanna. Upgraded throughout, including modern kitchen and bathroom, this traditional home enjoys a large living room with feature fireplace and is accessed via internal staircase off the gated garden. Ideal spot for Llandaff Fields, Sophia Gardens and the city centre. Unfurnished. Off road gated parking. Gas central heating. Council Tax band F. EPC rating D. Available May 2025 for minimum initial twelve month term.



2



1



1



D

£975 PCM

CONTACT

EMAIL

lettings@thomashwood.com

TELEPHONE

02920 626252

WEBSITE

Energy Efficiency Rating		
	Current	Potential
Very energy efficient - lower running costs		
(92 plus) A		
(81-91) B		
(69-80) C		
(55-68) D		
(39-54) E		
(21-38) F		
(1-20) G		
Not energy efficient - higher running costs		
England & Wales	EU Directive 2002/91/EC	

