

GF 114, The Philog,
Whitchurch,
Cardiff,
CF14 1ED

2 Bed Flat/Apartment

£950 PCM



A tastefully converted period property, this stylish ground floor flat enjoys the comforts of modernisation whilst retaining many original features. The property offers a spacious open plan living room/kitchen, double bedroom with doors to rear enclosure, small second bedroom/office and bathroom. Attractive low maintenance enclosed rear garden with gate access to side street. Gas central heating. Central position for easy access to UHW, Whitchurch Village and the M4 motorway. Unfurnished with kitchen appliances. On road parking. Available July 2024 for initial minimum twelve month term.

-  2
-  1
-  1
-  C

£950 PCM

CONTACT

EMAIL

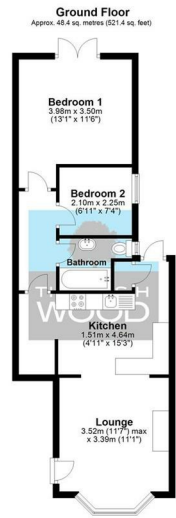
lettings@thomashwood.com

TELEPHONE

02920 626252

WEBSITE

Energy Efficiency Rating		
	Current	Potential
Very energy efficient - lower running costs		
(92 plus) A		
(81-91) B		
(69-80) C	72	77
(55-68) D		
(39-54) E		
(21-38) F		
(1-20) G		
Not energy efficient - higher running costs		
England & Wales	EU Directive 2002/91/EC	



Total area: approx. 48.4 sq. metres (521.4 sq. feet)