



56 Worcester Close, Chesterfield, S45 9FB

£625 Per Month

- Modern Apartment
- Lounge
- Bathroom
- UNFURNISHED
- Popular & Convenient Location
- Kitchen
- Parking Space X1
- First Floor
- Two Bedrooms
- GCH, uPVC Dbl Glazed

56 Worcester Close, Chesterfield S45 9FB

A Well Presented Modern Two Bedroom First Floor Apartment!

Located on this popular & convenient Development. offered UNFURNISHED, this apartment is neutrally decorated and is well placed for an excellent range of local amenities, major road links inc A61 & M1 J29.

Further benefits include; GCH, upvc double glazing and x1 allocated vehicle space.

The living accommodation comprises of; Entrance Lobby and Stairs To First Floor Landing, Lounge, Fitted Kitchen, Two Bedrooms and Bathroom.

Sorry NO Pets or Smokers.

Working Applicants Preferred or Guarantor Required.

Total floor area 55.3 Sq.M / 595 Sq.Ft



Council Tax Band: B



Lounge

14'0" (15'8") x 10'5"

Kitchen

9'6" (9'4") x 7'1" (7'1")

With integrated cooking appliances

Bedroom

12'11" x 9'8" (9'8")

Bedroom

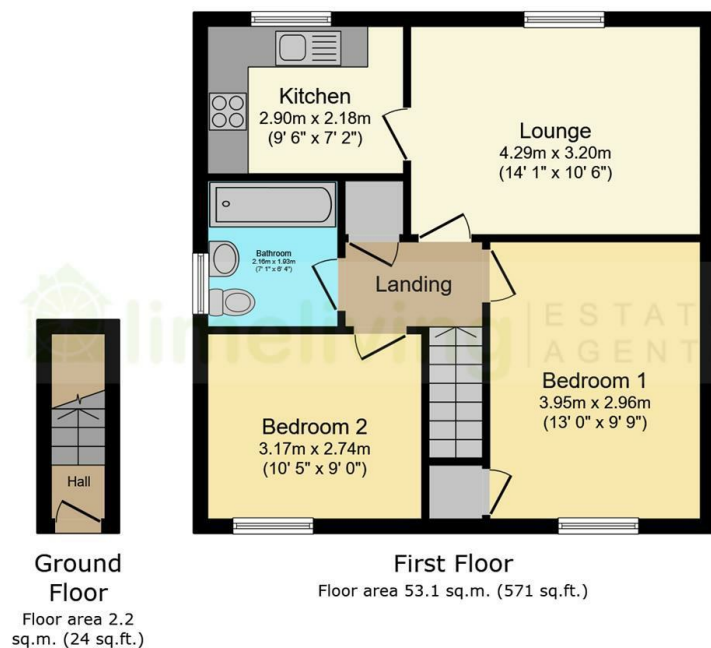
10'4" (10'4") x 8'11" (9'1")

Bathroom

Three piece white coloured suite with Shower Over the Bath.

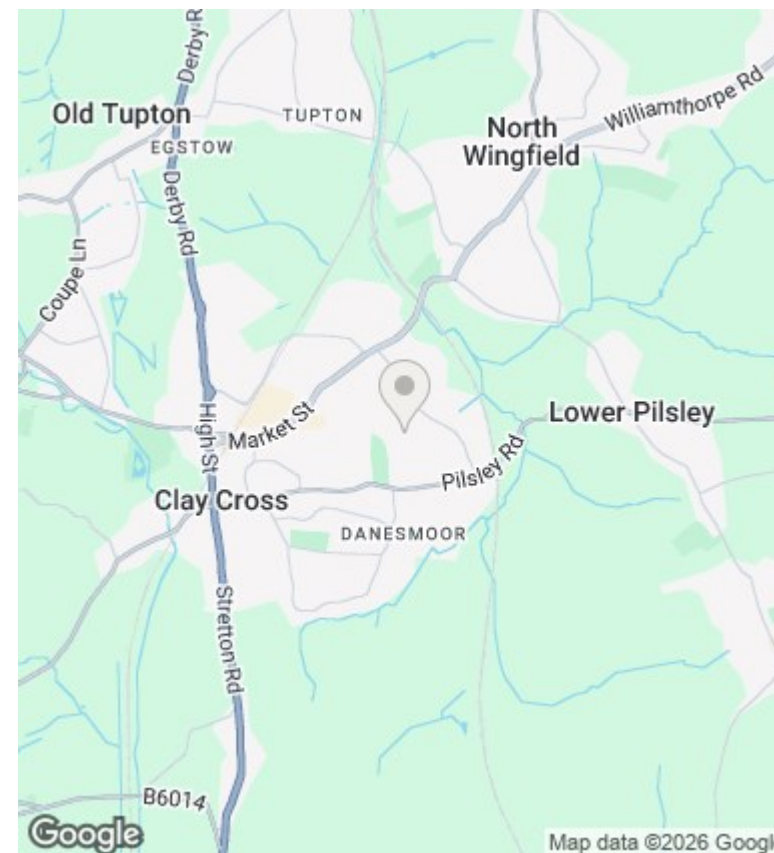






Total floor area: 55.3 sq.m. (595 sq.ft.)

This floor plan is for illustrative purposes only. It is not drawn to scale. Any measurements, floor areas (including any total floor area), openings and orientations are approximate. No details are guaranteed, they cannot be relied upon for any purpose and do not form any part of any agreement. No liability is taken for any error, omission or misstatement. A party must rely upon its own inspection(s). Powered by www.Propertybox.io



Directions

Viewings

Viewings by arrangement only. Call 01246 275 559 to make an appointment.

Council Tax Band

B

Energy Efficiency Rating		
	Current	Potential
Very energy efficient - lower running costs		
(92 plus) A		
(81-91) B	83	84
(69-80) C		
(55-68) D		
(39-54) E		
(21-38) F		
(1-20) G		
Not energy efficient - higher running costs		
England & Wales		EU Directive 2002/91/EC