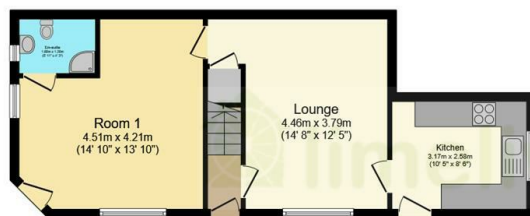




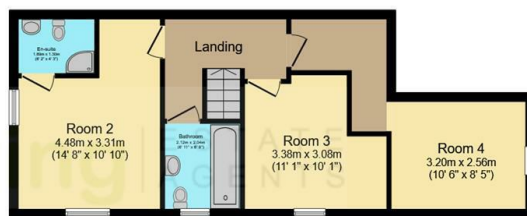
## Room 3, 27 Chester Street, Chesterfield, S40 1DW

£500 Per Month

- House Share
- Shared Accommodation
- Fitted Kitchen
- Fully FURNISHED
- Popular Location
- X3 Bedrooms
- Bathroom
- Very Well Presented
- x2 with En Suite
- Rear Garden



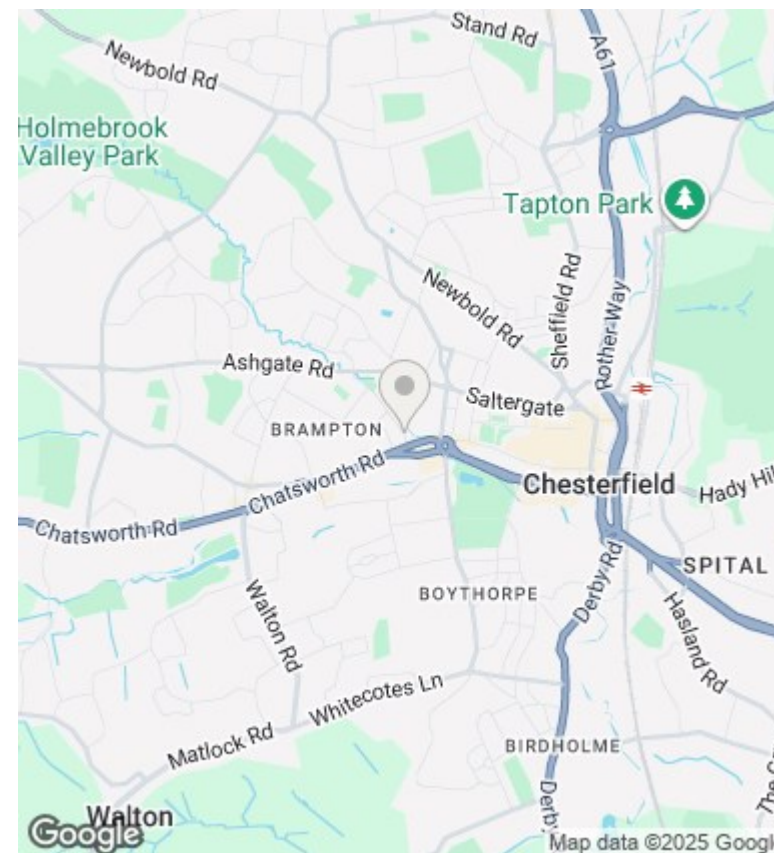
**Ground Floor**  
Floor area 47.7 sq.m. (514 sq.ft.)



**First Floor**  
Floor area 48.0 sq.m. (517 sq.ft.)

Total floor area: 95.8 sq.m. (1,031 sq.ft.)

This floor plan is for illustrative purposes only. It is not drawn to scale. Any measurements, floor areas (including any total floor area), openings and orientations are approximate. No details are guaranteed, they cannot be relied upon for any purpose and do not form any part of any agreement. No liability is taken for any error, omission or misstatement. A party must rely upon its own inspection(s). Powered by [www.Propertybox.io](http://www.Propertybox.io)



## Directions

## Viewings

Viewings by arrangement only. Call 01246 275 559 to make an appointment.

## Council Tax Band

A

## EPC Rating:

D

Energy Efficiency Rating		
	Current	Potential
Very energy efficient - lower running costs		
(92 plus) <b>A</b>		
(81-91) <b>B</b>		86
(69-80) <b>C</b>		
(55-68) <b>D</b>	58	
(39-54) <b>E</b>		
(21-38) <b>F</b>		
(1-20) <b>G</b>		
Not energy efficient - higher running costs		
<b>England &amp; Wales</b>	EU Directive 2002/91/EC	