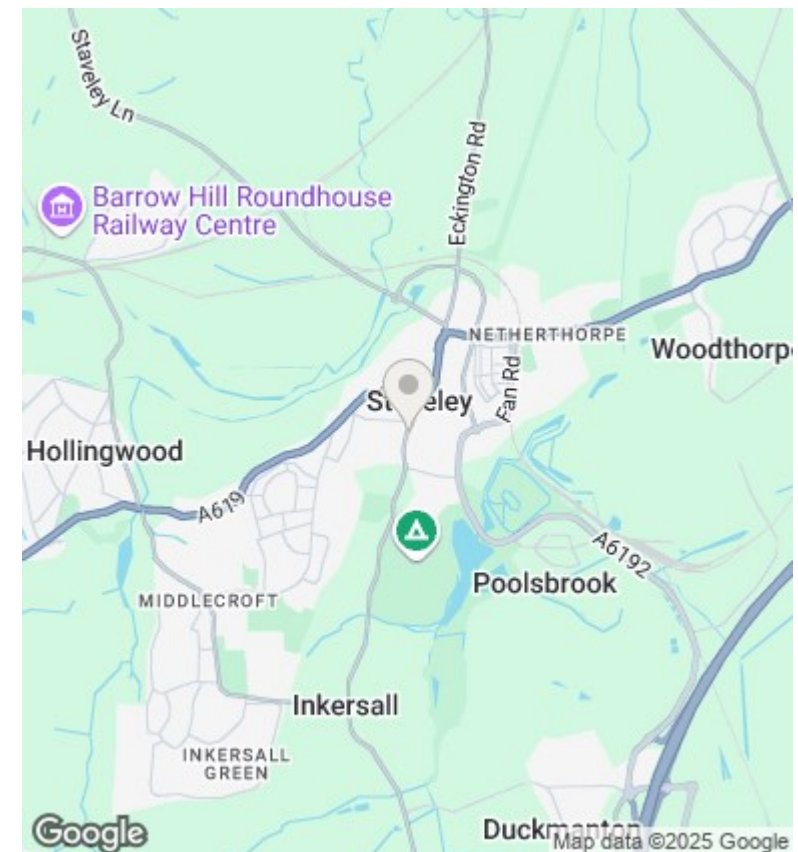
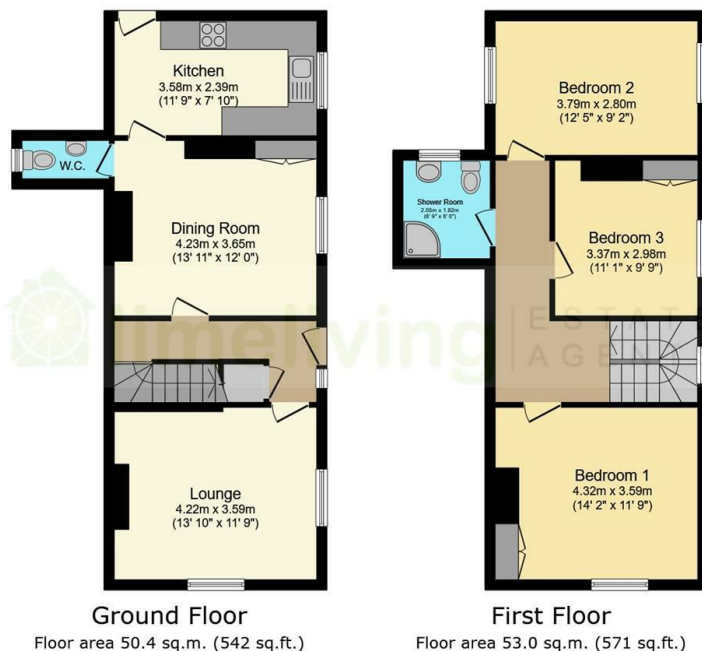




12 Inkersall Road, Staveley, Chesterfield, S43 3JL

Offers Around £110,000

- Semi Detached House
- Two Reception Rooms
- Shower Room
- Subject to CBC Improvement Notice
- Ideal for Investor
- Kitchen & D/st WC Room
- Rear Yard
- Suitable for HMO
- THREE Bedrooms
- Convenient Location



Directions

Viewings

Viewings by arrangement only. Call 01246 275 559 to make an appointment.

Council Tax Band

A

EPC Rating:

E

Energy Efficiency Rating		
	Current	Potential
Very energy efficient - lower running costs		
(92 plus) A		
(81-91) B		76
(69-80) C		
(55-68) D	51	
(39-54) E		
(21-38) F		
(1-20) G		
Not energy efficient - higher running costs		
England & Wales		EU Directive 2002/91/EC