



**Gresham Drive, Romford RM6**

**Guide Price £475,000 - £500,000 Freehold**







## 30 Gresham Drive

Romford RM6

Council Tax band: D

Tenure: Freehold

- Four bedroom mid terrace with two bathrooms
- Off Street Parking
- Well presented throughout
- Fitted wardrobes
- Ensuite to main bedroom
- Study / Office area
- Good size garden
- Access for A12 and bus routes
- Goodmayes / Chadwell Heath station located for Elizabeth Line





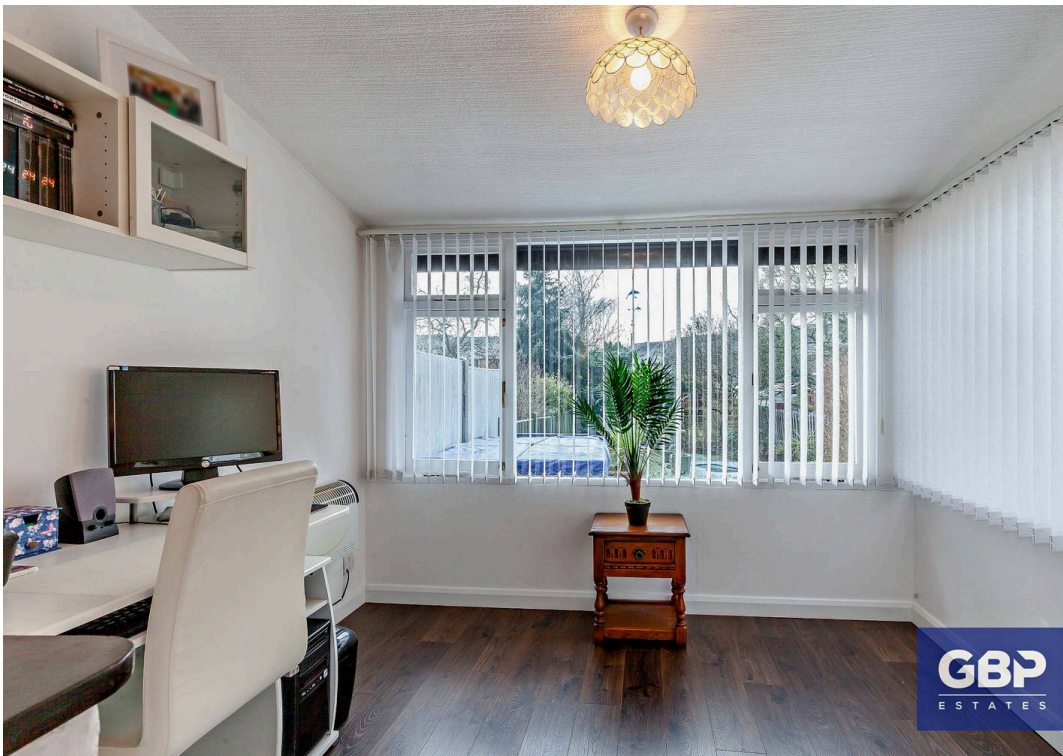
**GBP**  
ESTATES



**GBP**  
ESTATES



**GBP**  
ESTATES



**GBP**  
ESTATES