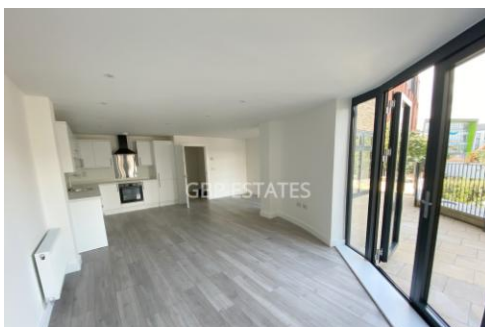




## Pullman Square, Grays

Rent **£1,200 pcm**



Modern luxury two-bedroom first floor apartment located in High Street, Grays.  
Comprising on an open plan living room / kitchen with doors leading to outside space, sizeable bedroom, and modern bathroom. Centrally located for Grays Station and High Street with shops and restaurants. Parking is also available on request.  
This apartment offers lots of light and contemporary living throughout.  
Call GBP Estates to register your interest 01708 504455.

- LUXURY TWO BEDROOM APARTMENT
- STONES THROW OF GRAYS STATION
- OPEN PLAN LIVING ROOM / KITCHEN
- SIZEABLE BEDROOMS
- MODERN BATHROOM
- AVAILABLE FROM 23<sup>RD</sup> OCTOBER

# ACCOMMODATION



Energy Efficiency Rating		Current	Potential
Very energy efficient - lower running costs			
(92-100) A			
(81-91) B			
(69-80) C			
(55-68) D			
(39-54) E		55	55
(21-38) F			
(1-20) G			
Not energy efficient - higher running costs			
<b>England &amp; Wales</b>	EU Directive 2002/91/EC		

Environmental (CO <sub>2</sub> ) Impact Rating		Current	Potential
Very environmentally friendly - lower CO <sub>2</sub> emissions			
(92-100) A			
(81-91) B			
(69-80) C			
(55-68) D		59	59
(39-54) E			
(21-38) F			
(1-20) G			
Not environmentally friendly - higher CO <sub>2</sub> emissions			
<b>England &amp; Wales</b>	EU Directive 2002/91/EC		



DISCLAIMER: These particulars, whilst believed to be accurate are set out as a general outline only for guidance and do not constitute any part of an offer or contract. Intending purchasers should not rely on them as statements or representation of fact, but must satisfy themselves by inspection or otherwise as to their accuracy. We have not carried out a detailed survey nor tested the services, appliances and specific fittings. Room sizes should not be relied upon for carpets and furnishings. The measurements given are approximate. No person in this firm's employment has the authority to make or give any representation or warranty in respect of the property.