

# Arnolds | Keys

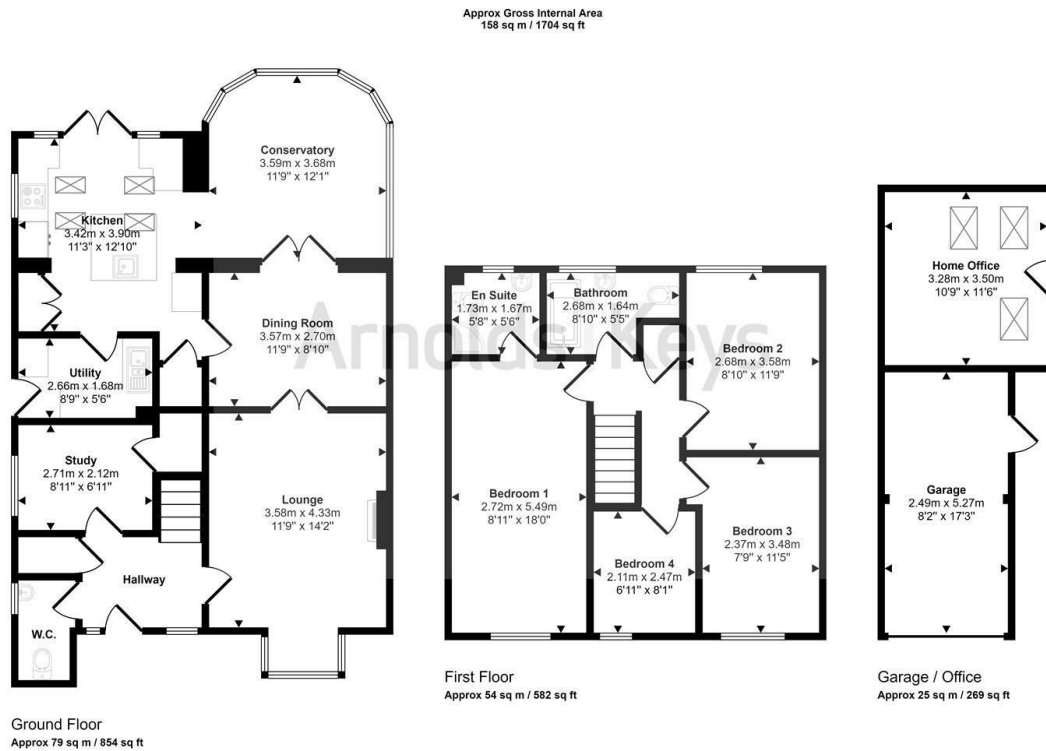


## 27 Meadow Way, Horsford, NR10 3SD

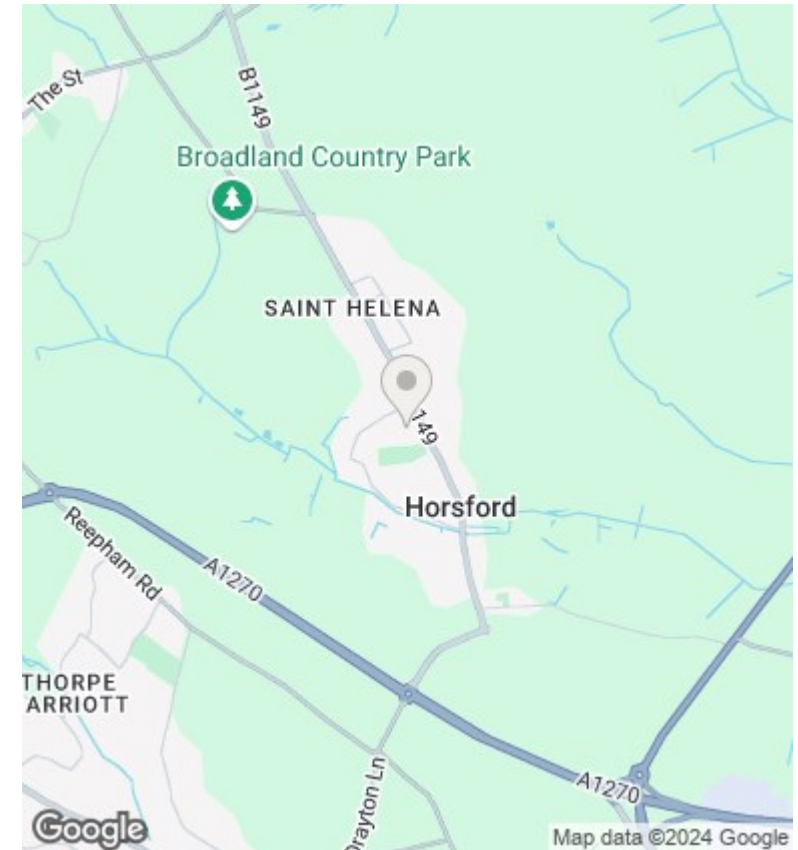
Guide Price £450,000

- DETACHED FAMILY HOME
- DETACHED GARDEN ROOM/HOME OFFICE
- POPULAR VILLAGE LOCATION
- FOUR BEDROOMS
- OFF ROAD PARKING
- MAIN BEDROOM WITH ENSUITE
- THREE RECEPTION ROOMS
- GARAGE





This floorplan is only for illustrative purposes and is not to scale. Measurements of rooms, doors, windows, and any items are approximate and no responsibility is taken for any error, omission or mis-statement. Icons of items such as bathroom suites are representations only and may not look like the real items. Made with Made Snappy 360.



## Directions

## Viewings

Viewings by arrangement only. Call 01603 620551 to make an appointment.

## Council Tax Band

D

## EPC Rating:

Energy Efficiency Rating		Current	Potential
Very energy efficient - lower running costs			
(92 plus) <b>A</b>			
(81-91) <b>B</b>			
(69-80) <b>C</b>			
(55-68) <b>D</b>			
(39-54) <b>E</b>			
(21-38) <b>F</b>			
(1-20) <b>G</b>			
Not energy efficient - higher running costs			
England & Wales		EU Directive 2002/91/EC	