



**38 Edith Road, Maidenhead, Berkshire SL6 5DY**

**38 EDITH ROAD, MAIDENHEAD  
BERKSHIRE SL6 5DY**

**GUIDE PRICE: £795,000  
FREEHOLD**

A spacious three-bedroom detached bungalow located in one of Maidenhead's sought after roads in Pinkneys Green. The property features a master bedroom with en-suite, two further double bedrooms, spacious fitted kitchen with separate utility room, large living room, dining room, conservatory, bathroom, generous loft space with great scope to extend into (STPP), driveway parking for several cars and a stunning rear garden of good size with patio area. The property is close to local amenities, acres of National Trust Land, Newlands School for girls and within easy reach of Maidenhead town centre & train station (Elizabeth Line).

**\*SPACIOUS DETACHED BUNGALOW  
\*ENTRANCE HALL \*LARGE LIVING ROOM  
\*DINING ROOM \*SPACIOUS FITTED  
KITCHEN \*SEPARATE UTILITY ROOM  
\*CONSERVATORY \*MAIN BEDROOM WITH  
EN-SUITE SHOWER ROOM \*TWO FURTHER  
DOUBLE BEDROOMS \*FAMILY BATHROOM  
\*GENEROUS LOFT SPACE WITH SCOPE TO  
EXTEND INTO (STPP) \*STUNNING REAR  
GARDEN WITH GOOD SIZE PATIO AREA  
\*DRIVEWAY PARKING FOR SEVERAL CARS  
\*CLOSE TO LOCAL AMENITIES, NATIONAL  
TRUST LAND AND NEWLANDS SCHOOL  
FOR GIRLS \*EPC RATING D \*COUNCIL TAX  
BAND E**





Approximate Gross Internal Area  
131.9 sq m / 1,420 sq ft

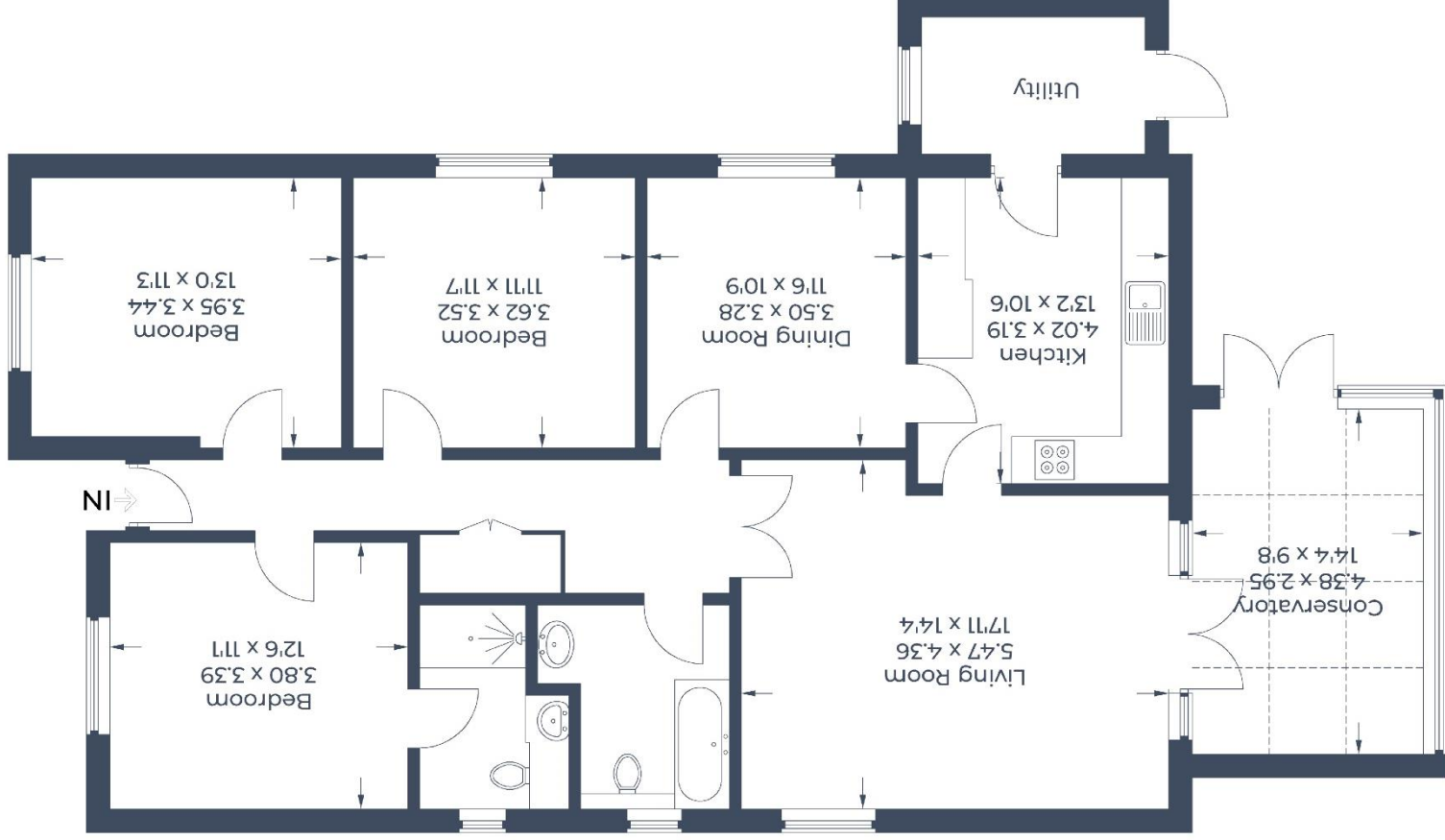


Illustration for identification purposes only.  
measurements are approximate, not to scale.  
© CJ Property Marketing Produced for Braxton

For clarification we wish to inform prospective purchasers that we have prepared these sales particulars as a general guide. We have not carried out a detailed survey nor tested the services, appliances and specific fittings. Room sizes should not be relied upon for carpets, furnishings and appliances. Whilst these particulars are believed to be correct their accuracy is not guaranteed and are given without responsibility. They do not form part of any contract.



39-41 High Street, Maidenhead, Berkshire SL6 1JF  
Tel: 01628 674234 Fax: 01628 785432  
Email: [property@braxtons.co.uk](mailto:property@braxtons.co.uk)  
[braxtons.co.uk](http://braxtons.co.uk)

Residential Sales | Land & New Homes | Properties to Let | Landlords, Lettings and Management Services