



57 Oaken Grove, Maidenhead, Berkshire SL6 6HN

57 OAKEN GROVE, MAIDENHEAD BERKSHIRE SL6 6HN

GUIDE PRICE: £975,000 FREEHOLD

Situated in this sought after mature tree lined residential road, backing directly onto Oaken Grove Park. A delightful well presented four bedroom detached family home featuring an abundance of natural light and a stunning south facing rear garden. The property features a generous living room enjoying direct views over the rear garden with polished parquet flooring which leads into the dining room, a modern kitchen and four good size bedrooms. There is ample scope to extend further, subject to the necessary planning consents being obtained.

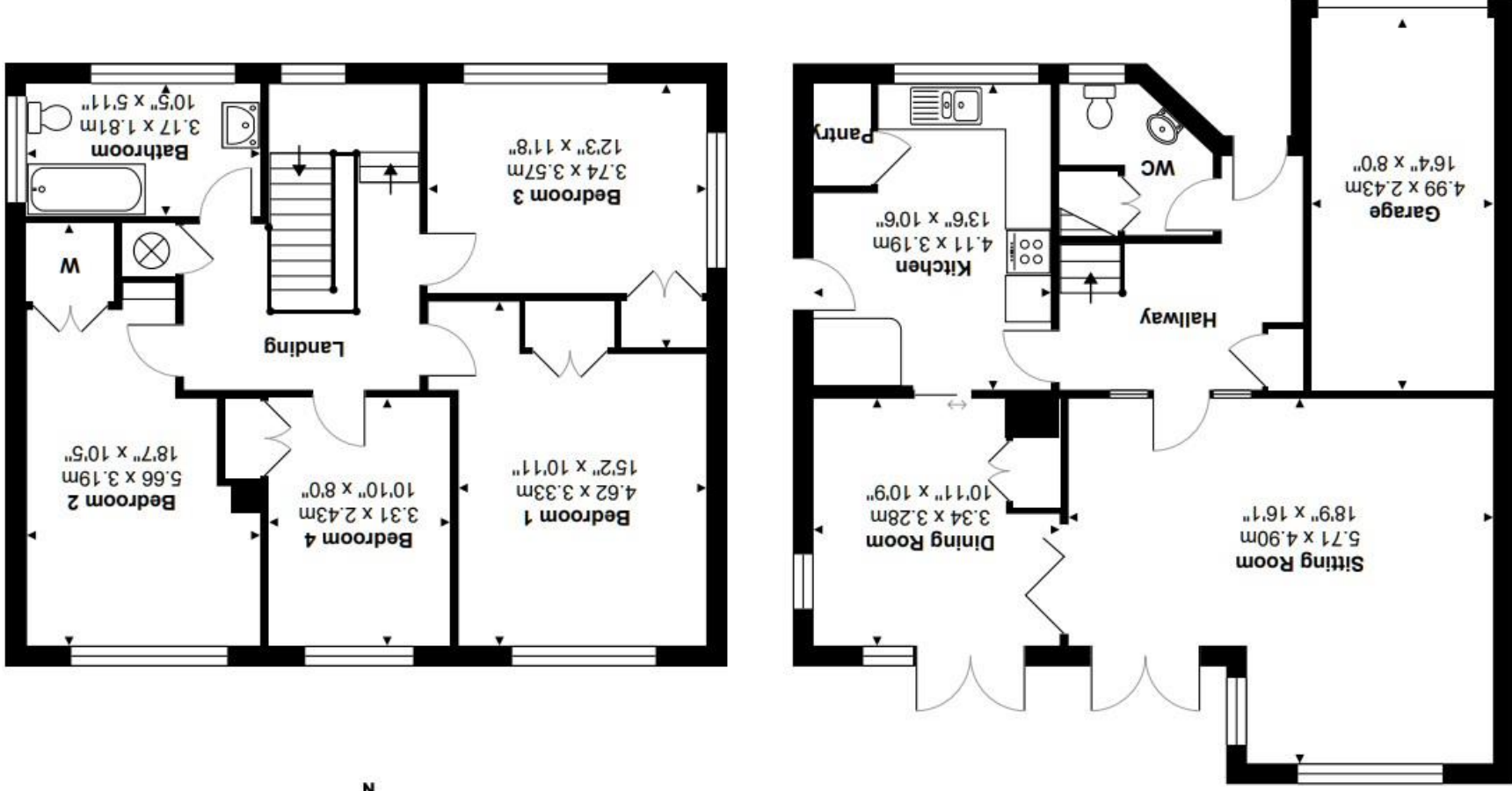
***ENTRANCE HALL WITH POLISHED PARQUET FLOOR *CLOAKROOM *LIVING ROOM & SEPARATE DINING ROOM, BOTH FEATURING POLISHED PARQUET FLOORING & DIRECT ACCESS OUT ONTO THE REAR GARDEN *MODERN KITCHEN *FOUR GOOD SIZE BEDROOMS *MODERN BATHROOM *GENEROUS SOUTH FACING REAR GARDEN BACKING DIRECTLY ONTO OAKEN GROVE PARK FEATURING AN OUTSIDE CABIN WHICH COULD EASILY BE USED FOR A HOME OFFICE *GAS HEATING *DRIVEWAY PARKING *GARAGE *CONVENEINT FOR LOCAL SCHOOLS & APPROX 1.3 MILES FROM THE MAINLINE RAILWAY STATION (PADDINGTON/ELIZABETH LINE) *EPC RATING D *COUNCIL TAX BAND G**





Oaken Grove, Maidenhead, SL6 6HN

Approx. Total Area: 143.5 m² ... 1545 ft² (includes Garage)



Whilst every attempt has been made to ensure the accuracy of the floorplans contained here, measurements of doors, windows and rooms are approximate and no responsibility is taken for any error, omission or mis-statement. These plans are for representation purposes only.

For clarification we wish to inform prospective purchasers that we have prepared these sales particulars as a general guide. We have not carried out a detailed survey nor tested the services, appliances and specific fittings. Room sizes should not be relied upon for carpets, furnishings and appliances. Whilst these particulars are believed to be correct their accuracy is not guaranteed and are given without responsibility. They do not form part of any contract.



39-41 High Street, Maidenhead, Berkshire SL6 1JF
 Tel: 01628 674234 Fax: 01628 785432
 Email: property@braxtons.co.uk
braxtons.co.uk

Residential Sales | Land & New Homes | Properties to Let | Landlords, Lettings and Management Services