



98 Bridle Road, Maidenhead, Berkshire SL6 7RT

**98 BRIDLE ROAD
MAIDENHEAD
BERKSHIRE SL6 7RT**

**GUIDE PRICE: £750,000
FREEHOLD**

An opportunity to acquire this delightful three-bedroom detached family house which has been extended on the ground floor to provide a hub of the house kitchen/dining/family room. The property stands in a generous rear garden located in this sought after residential road conveniently positioned for Furze Platt School and within approx. 0.4 miles of Furze Platt Halt (Branch Lane to Maidenhead Station – Paddington/Elizabeth Line). The property offers further scope for enlargement, subject to the necessary planning/building consents being obtained and an internal inspection is most strongly recommended.

***ENTRANCE HALL *CLOAKS/SHOWER ROOM
*STUDY/BEDROOM 4 *KITCHEN/LIVING
ROOM WITH BI-FOLD DOORS PROVIDING
DIRECT ACCESS TO THE REAR GARDEN
*DINING ROOM *UTILITY ROOM *THREE
BEDROOMS *BATHROOM *GARAGE WITH
ATTACHED STORE ROOM *DELIGHTFUL
ENCLOSED REAR GARDEN *DRIVEWAY
PARKING *EPC RATING C *COUNCIL TAX
BAND E**





Bridle Road
 Approximate Gross Internal Area 119.74 sq m / 1288.87 sq ft (Excluding Garage & Store)
 Garage Area 17.44 sq m / 187.72 sq ft
 Store Area 6.30 sq m / 67.81 sq ft
 Total Area 143.48 sq m / 1544.40 sq ft

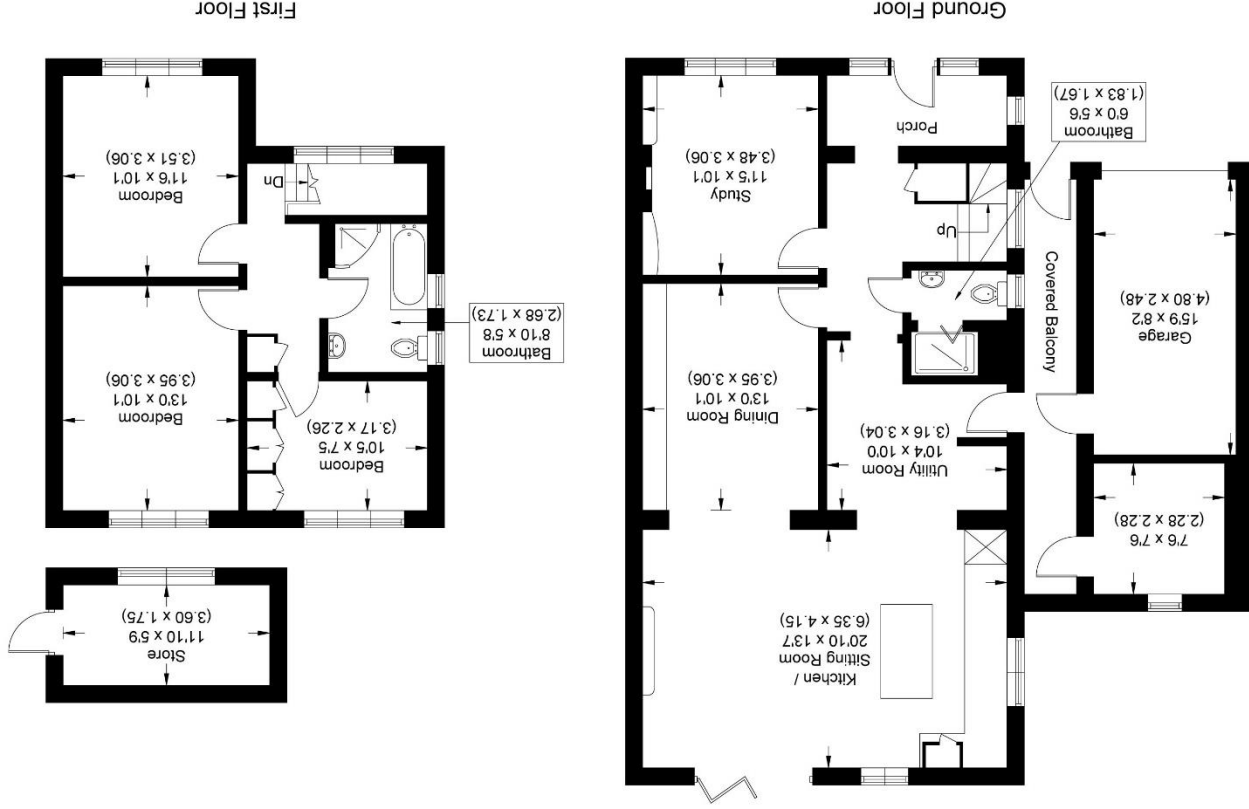
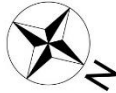


Illustration for identification purposes only,
 measurements are approximate, not to scale.

For clarification we wish to inform prospective purchasers that we have prepared these sales particulars as a general guide. We have not carried out a detailed survey nor tested the services, appliances and specific fittings. Room sizes should not be relied upon for carpets, furnishings and appliances. Whilst these particulars are believed to be correct their accuracy is not guaranteed and are given without responsibility. They do not form part of any contract.