



2 Lockbridge Court, Maidenhead, Berkshire, SL6 8UP

2 LOCKBRIDGE COURT MAIDENHEAD, BERKSHIRE SL6 8UP

PRICE: £660,000

SHARE OF FREEHOLD

With wonderful River Views, within this much sought after secure, gated development in the prestigious Maidenhead Riverside, a spacious first floor apartment offered to the market with no onward chain. Featuring a Master bedroom with en-suite bathroom, second double bedroom, shower room, large living/dining room, re-fitted kitchen, large terrace accessed via the living room and kitchen with views across the River Thames, two parking spaces, bike store and well-maintained communal grounds. Lockbridge Court is conveniently located within a short walk to many sought after restaurants and within easy reach of Maidenhead town centre and train station (Elizabeth Line) and the neighbouring village of Cookham.

***SPACIOUS FIRST FLOOR RIVERSIDE APARTMENT
*TWO DOUBLE BEDROOMS *SHOWER ROOM &
EN-SUITE BATHROOM *LARGE LIVING/DINING
ROOM *MODERN FITTED KITCHEN *LARGE 29FT
COVERED BALCONY WITH VIEWS ACROSS THE
RIVER *TWO CAR PARK SPACES *SECURE GATED
DEVELOPMENT *LIFT TO ALL FLOORS *NO
ONWARD CHAIN *EPC RATING B *COUNCIL TAX
BAND F**

Service charge: £4,300 per annum

Ground rent: nil

Years remaining on lease: 964







Lockbridge Court
Approximate Gross Internal Area 102.10 sq m / 1098.99 sq ft

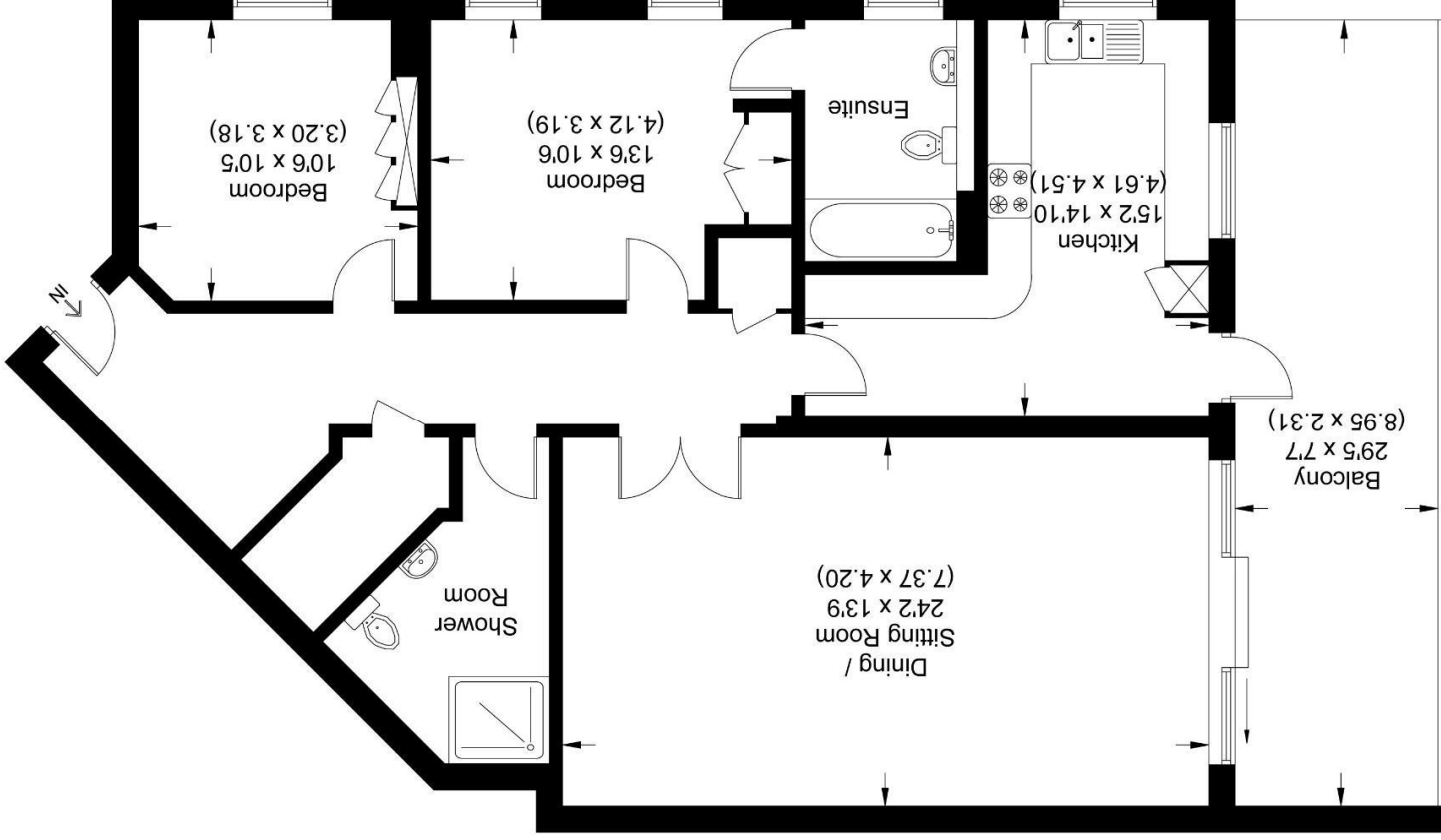


Illustration for identification purposes only,
measurements are approximate, not to scale.

39-41 High Street, Maidenhead, Berkshire SL6 1JF
Tel: 01628 674234 Fax: 01628 785432
Email: property@braxtons.co.uk
braxtons.co.uk

Residential Sales | Land & New Homes | Properties to Let | Landlords, Lettings and Management Services

