



8 Longworth Drive, Maidenhead, Berkshire SL6 8XA

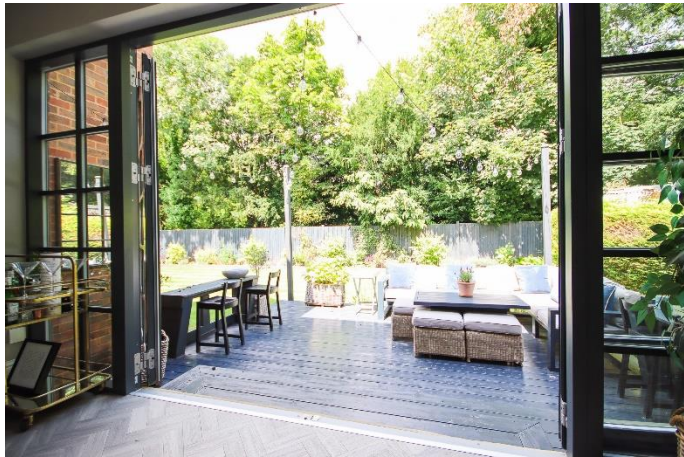
**8 LONGWORTH DRIVE
MAIDENHEAD
BERKSHIRE SL6 8XA**

PRICE: £1,395,000 FREEHOLD

Located in an exclusive cul-de-sac opposite the River Thames at Boulters Lock, a stunning refurbished and re-modelled four-bedroom detached modern house. The property features an impressive hub of the house kitchen/dining/family room with access onto an extensive decking area with fitted furniture and lighting, separate utility room, generous first floor living room, four bedrooms and three luxury bath/shower rooms (two en-suite). Outside the property benefits from extensive front and rear gardens, a double garage and driveway parking for multiple vehicles. Longworth Drive is a much sought-after address within Maidenhead's River area with its array of well-regarded restaurants, and is within easy reach of the town centre and railway station (Elizabeth Line).

***CUL-DE-SAC LOCATION *ENTRANCE HALL & CLOAKROOM *IMPRESSIVE KITCHEN/DINING/FAMILY ROOM *UTILITY ROOM *FOUR BEDROOMS *THREE LUXURY BATH/SHOWER ROOMS (TWO EN-SUITE) *EXTENSIVE FRONT & REAR GARDENS *EXTENSIVE DECKING AREA WITH FITTED FURNITURE & LIGHTING *DOUBLE GARAGE & DRIVEWAY PARKING *EASY REACH OF TOWN & STATION (ELIZABETH LINE) *EPC RATING C *COUNCIL TAX BAND G**





Longworth Drive

Approximate Gross Internal Area 217.84 sq m / 2344.81 sq ft
 (Including Garage)
 Garage Area 29.92 sq m / 322.05 sq ft

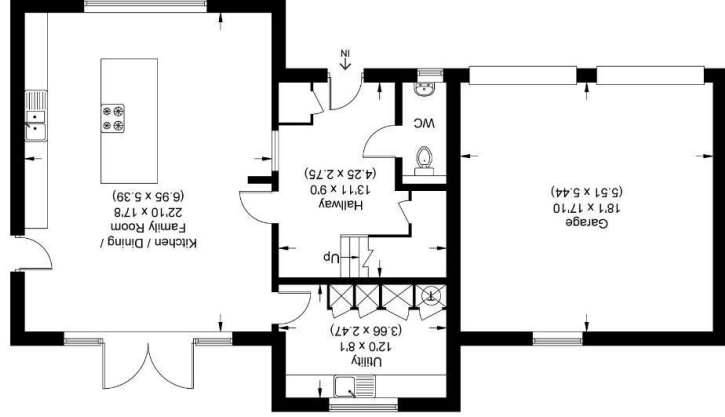
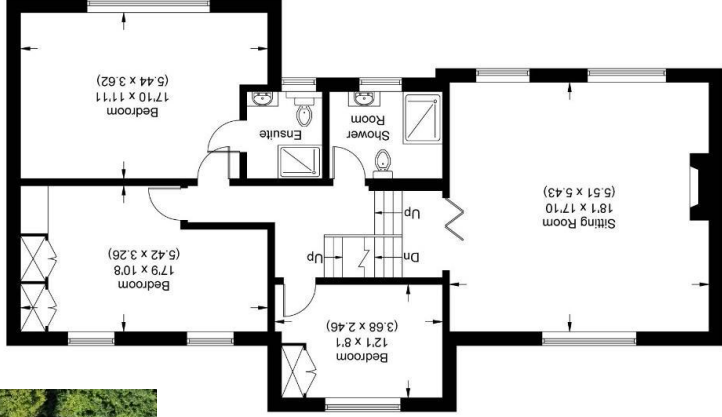
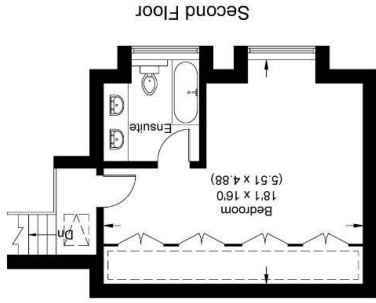


Illustration for identification purposes only,
 measurements are approximate, not to scale.

For clarification we wish to inform prospective purchasers that we have prepared these sales particulars as a general guide. We have not carried out a detailed survey nor tested the services, appliances and specific fittings. Room sizes should not be relied upon for carpets, furnishings and appliances. Whilst these particulars are believed to be correct their accuracy is not guaranteed and are given without responsibility. They do not form part of any contract.



39-41 High Street, Maidenhead, Berkshire SL6 1JF
 Tel: 01628 674234 Fax: 01628 785432
 Email: property@braxtons.co.uk
 braxtons.co.uk
 Residential Sales | Land & New Homes | Properties to Let | Landlords, Lettings and Management Services

