

# Jukes & Co

## Estate Agents



## Cargreen Road

South Norwood, London, SE25 5AD

£325,000



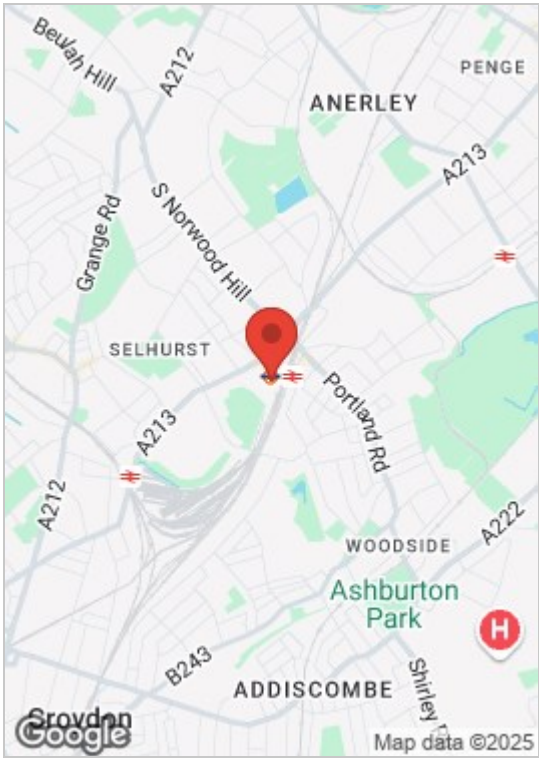
This charming two double Bedroom, offers a blend of comfort and convenience, making it an ideal choice for first-time buyers or those looking for a buy-to-let investment. The property features It's own Courtyard garden and share of a communal garden, adding a touch of independence and outdoor space that is rare in similar properties. Inside, you'll find a spacious lounge with an open plan kitchen perfect for relaxing or entertaining, alongside two double bedrooms and a modern bathroom

The location is a key highlight, with Norwood Junction station minutes away. The station offers a speedy 12-minute link to London Bridge, as well as easy access to other popular destinations like Clapham and East Croydon, making it ideal for commuters. Additionally, the property is situated close to bus stops, schools, and a vibrant high street, where an array of shops, restaurants, and other amenities are available within a five-minute walk.

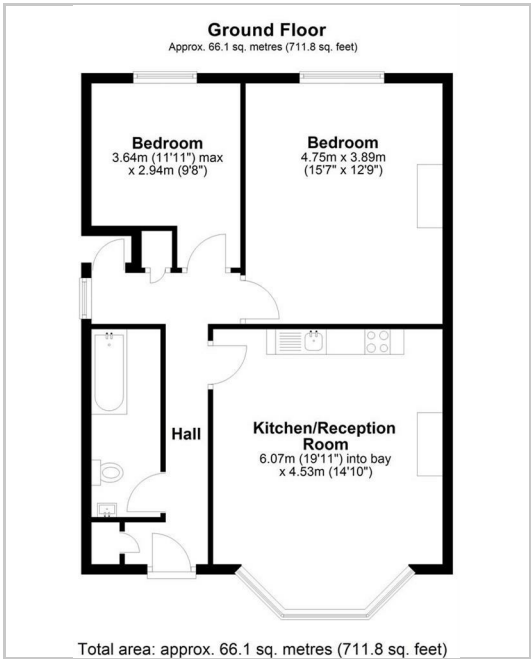
For leisure and recreation, South Norwood Lakes is nearby, providing a beautiful setting for weekend strolls or outdoor activities. The area also boasts a leisure centre, ensuring there's always something to do. This combination of spacious living, convenient transport links, and access to both urban amenities and natural beauty makes this flat a standout choice for a comfortable and well-connected lifestyle.



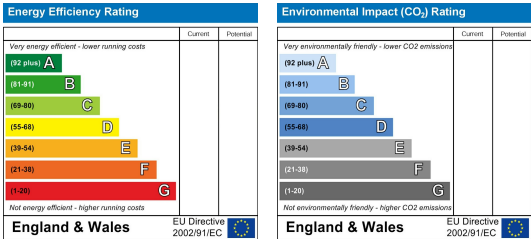
Area Map



Floor Plan



Energy Efficiency Graph



These particulars, whilst believed to be accurate are set out as a general outline only for guidance and do not constitute any part of an offer or contract. Intending purchasers should not rely on them as statements of representation of fact, but must satisfy themselves by inspection or otherwise as to their accuracy. No person in this firms employment has the authority to make or give any representation or warranty in respect of the property.