

Jukes & Co

Estate Agents



Addison Road

, London, SE25 4LP

£400,000



Elegant Two-Bedroom Victorian Conversion in South Norwood

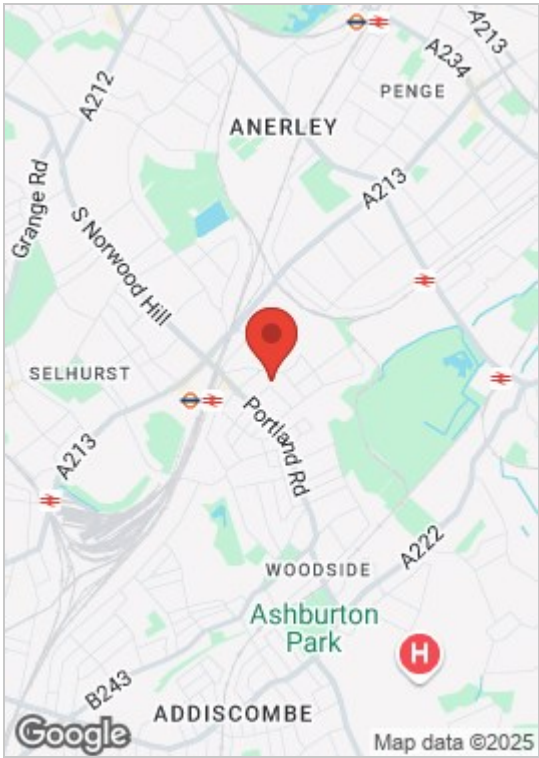
Experience the perfect blend of historic charm and modern living in this beautifully presented two-bedroom Victorian conversion. The spacious lounge, adorned with original period features, offers a warm and inviting space ideal for relaxation and entertaining guests.

The separate kitchen diner serves as the heart of the home, thoughtfully designed to accommodate both everyday living and hosting dinner parties. A large, stylish bathroom adds a touch of luxury to this delightful residence.

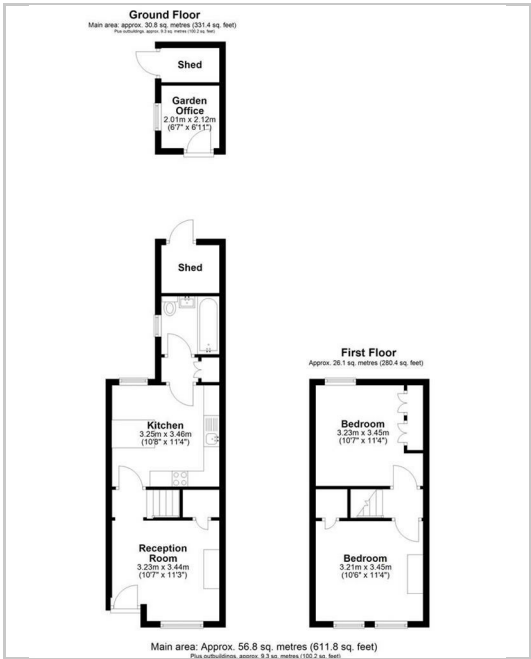
Situated in the vibrant community of South Norwood, this home benefits from excellent transport connections. Norwood Junction station, just a short walk away, provides frequent services via the London Overground, Southern, and Thameslink lines, ensuring swift access to central London and beyond. Additionally, numerous bus routes, including the 75, 157, 197, 312, 410, and 130, serve the area, connecting you to destinations such as Croydon, Crystal Palace, and Lewisham.



Area Map



Floor Plan



Energy Efficiency Graph



These particulars, whilst believed to be accurate are set out as a general outline only for guidance and do not constitute any part of an offer or contract. Intending purchasers should not rely on them as statements of representation of fact, but must satisfy themselves by inspection or otherwise as to their accuracy. No person in this firms employment has the authority to make or give any representation or warranty in respect of the property.