

Jukes & Co

Estate Agents



Estcourt Road

, London, SE25 4SB

No Offers £475,000



Nestled in a sought-after location just moments from the picturesque South Norwood Country Park, this immaculately maintained two double bedroom home offers a wealth of character but also has modern living and convenience. Step inside to discover a spacious Lounge area with a stunning fireplace. down the hallway is a separate dining room with a well equip modern kitchen and a separate utility area. Upstairs has two large bedrooms with lots of built in storage space and a very large modern bathroom with a roll top bath. This home has lots of natural light, giving you all the feel of modern but old making every corner of this home a joy to inhabit.

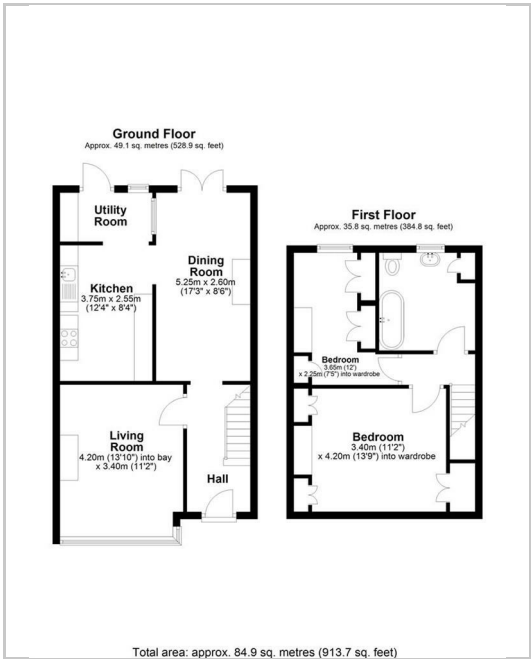
Beyond the stylish interior lies a meticulously and easy maintained garden, providing a private oasis for outdoor gatherings or moments of peaceful reflection. This property offers not only comfort but practicality at every turn. With excellent transport links and a wealth of local amenities nearby, residents will enjoy the best of both worlds - a tranquil retreat within easy reach of all that the vibrant neighbourhood has to offer.



Area Map



Floor Plan



Energy Efficiency Graph



These particulars, whilst believed to be accurate are set out as a general outline only for guidance and do not constitute any part of an offer or contract. Intending purchasers should not rely on them as statements of representation of fact, but must satisfy themselves by inspection or otherwise as to their accuracy. No person in this firms employment has the authority to make or give any representation or warranty in respect of the property.