

Jukes & Co

Estate Agents



Hambrook Road

, London, SE25 4HL

Offers In The Region Of £600,000

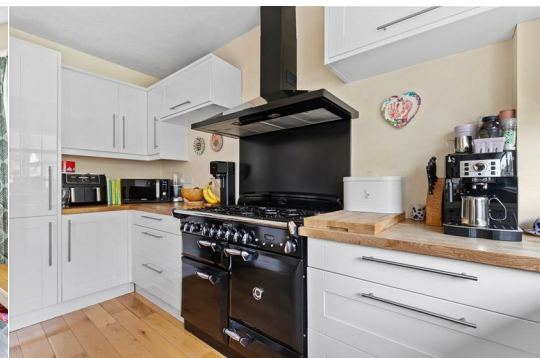


Stunning Four-Bedroom, Three-Storey 1930s Home in Prime Location

This beautifully presented 1930s home spans three spacious floors and boasts four generous bedrooms and two modern bathrooms. The ground floor features a stylish lounge, perfect for relaxing or entertaining, alongside a contemporary open-plan kitchen and dining area designed for modern living. with a beautiful well kept garden

Upstairs, you'll find three well-proportioned bedrooms and a sleek, modern family bathroom. The top floor showcases a large loft conversion offering a luxurious principal bedroom suite, complete with ample built-in storage and a chic ensuite shower room.

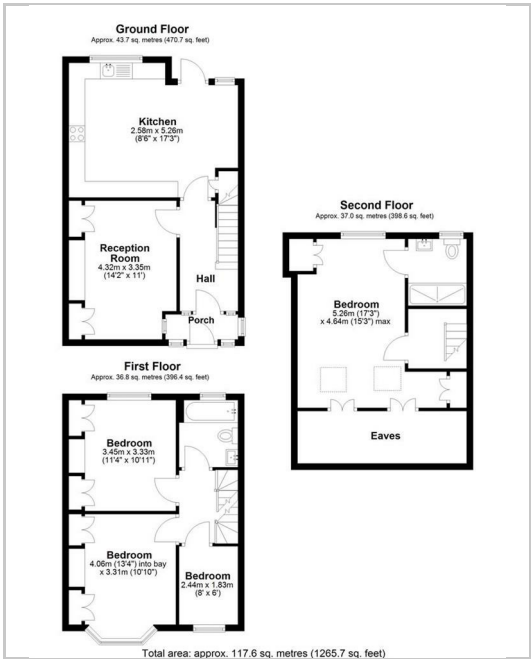
Located in one of the most convenient areas in town, this home is just a short walk from the ever-popular Norwood Junction Station, offering a rapid 12-minute connection to London Bridge and easy access to Clapham Junction, central London, Brighton, and Hastings. Located in the catchment area of OFSTED Outstanding Stewart Fleming Primary School.



Area Map



Floor Plan



Energy Efficiency Graph



These particulars, whilst believed to be accurate are set out as a general outline only for guidance and do not constitute any part of an offer or contract. Intending purchasers should not rely on them as statements of representation of fact, but must satisfy themselves by inspection or otherwise as to their accuracy. No person in this firms employment has the authority to make or give any representation or warranty in respect of the property.