

# Jukes & Co

## Estate Agents



## Malden Avenue

, London, SE25 4HR

£485,000



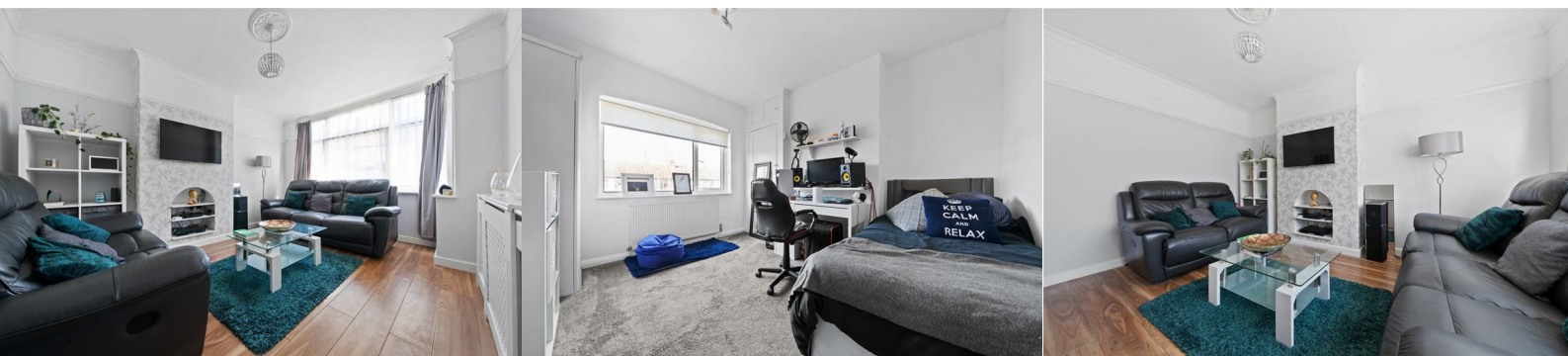
3 Bedroom 1 Bathroom | Terraced House | 990 sqft internally | Separate Living & Dining Room | Garden | No Chain | 0.5 Miles to Norwood Junction | 0.8 Miles to Birkbeck Station | 0.9 Miles to Elmers End Station | 83.6 square meters

Jukes and co are pleased to offer this charming 3-bedroom terraced house offers a perfect blend of space, comfort, and convenience, ideal for families or those seeking a welcoming neighborhood. offering great living accommodation for a family.

With Norwood Junction being a walk away with the 12 minute link to London Bridge, easy access to shops, schools, restaurants, the leisure Centre, country park and the local tram. The South Norwood Lakes is a little further and a great way to spend the weekend. making this the ideal location to live in.

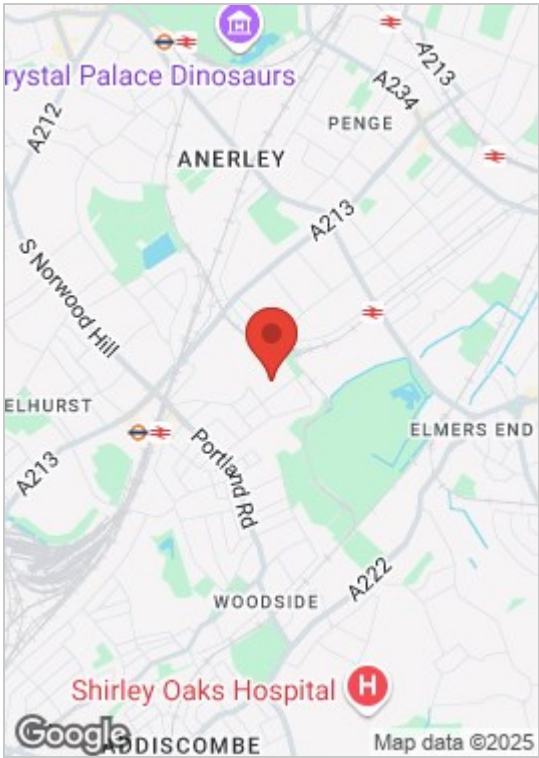
Downstairs: The property features a spacious living room, a separate dining room, and a well-equipped kitchen with plenty of storage and counter space. At the rear a lovely garden, ideal for outdoor living.

Upstairs: The first floor features a family bathroom and three bedrooms. with potential for a loft conversion

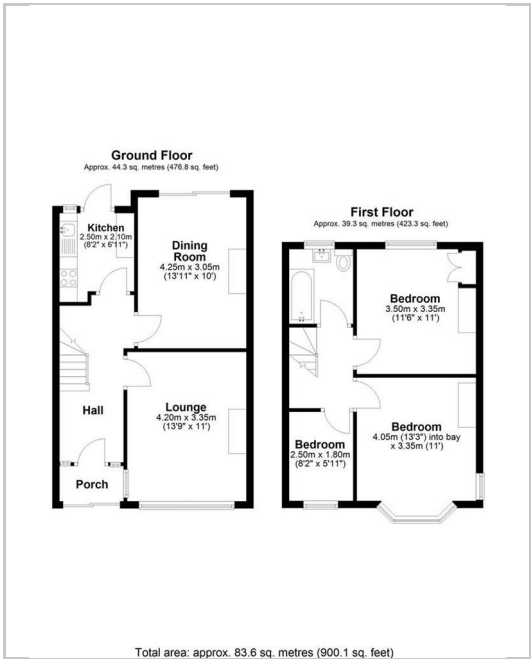




Area Map



Floor Plan



Energy Efficiency Graph



These particulars, whilst believed to be accurate are set out as a general outline only for guidance and do not constitute any part of an offer or contract. Intending purchasers should not rely on them as statements of representation of fact, but must satisfy themselves by inspection or otherwise as to their accuracy. No person in this firms employment has the authority to make or give any representation or warranty in respect of the property.