

Jukes & Co

Estate Agents



Carmichael Road

, London, SE25 5LT

Offers In The Region Of £500,000



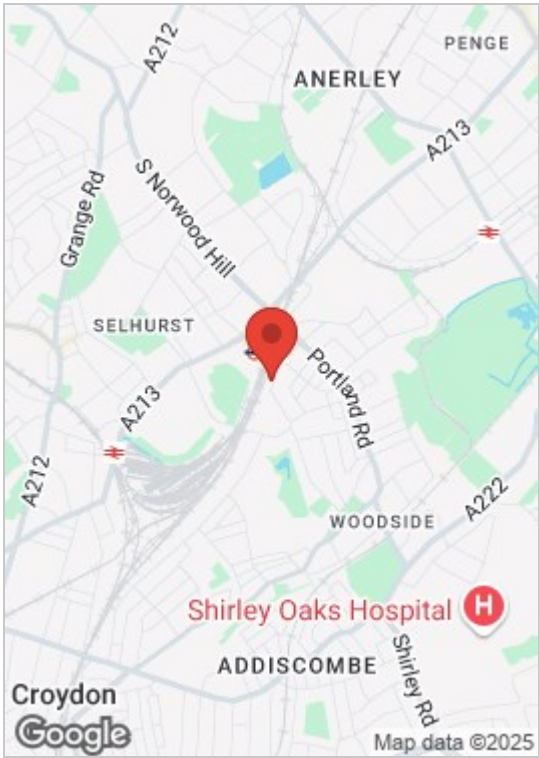
Welcome to this charming semi detached Two Double bedroom stunning home. 78 Square meters. With a large through lounge, luxury kitchen, luxury bathroom suite, double glazed windows, gas central heating, and a beautifully kept garden, this property offers comfortable living in a convenient location. Situated close to transport links and local amenities, this home presents an ideal opportunity for those seeking both accessibility and comfort, with all the modern facilities.

Conveniently positioned within walking distance of Norwood Junction Station, with its swift 12-minute link to London Bridge, this property ensures effortless commuting to various destinations including Victoria, Clapham Junction, and East Croydon. Additionally, the nearby tram line, leisure centre, schools, shops, parks, and bus stops further enhance the accessibility of this location, making it an attractive choice for families and professionals alike.

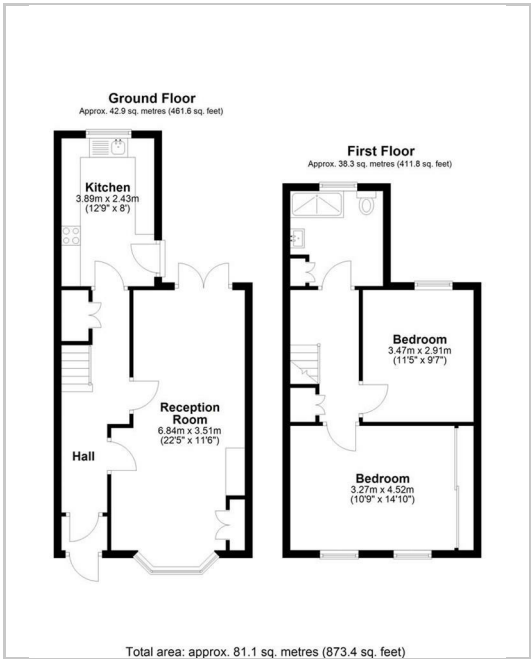
Beyond its practicality, this home also offers the opportunity to enjoy leisurely pursuits, with the beautiful South Norwood Lakes just a short distance away. Whether it's a relaxing weekend stroll or enjoying the serene surroundings, this picturesque setting adds to the appeal of residing in this vibrant neighbourhood. Don't miss the chance to make this property your ideal home, perfectly blending convenience with leisure in a prime location.



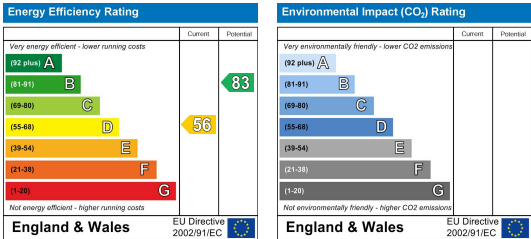
Area Map



Floor Plan



Energy Efficiency Graph



These particulars, whilst believed to be accurate are set out as a general outline only for guidance and do not constitute any part of an offer or contract. Intending purchasers should not rely on them as statements of representation of fact, but must satisfy themselves by inspection or otherwise as to their accuracy. No person in this firms employment has the authority to make or give any representation or warranty in respect of the property.