

Jukes & Co

Estate Agents



Holmesdale Road

, London, SE25 6PP

Offers Over £200,000



Jukes and Co are pleased to offer this one bedroom Victorian conversion, set in a building with lots of character.

Offering an open plan lounge and kitchen area, a luxury bathroom and a bright bedroom.

Share of freehold with a long lease and a short walk to Norwood Junction with the 12 minute link to London Bridge.

The flat is ideally situated just minutes from the bustling high street, where you'll find a variety of shops, restaurants, bars, and a yoga workshop, as well as convenient bus stops. For those who enjoy outdoor activities, the beautiful South Norwood Lakes is just a little further up the road, offering a perfect retreat for weekends. Additionally, the nearby leisure centre provides a great opportunity to stay active and enjoy various amenities, making this location an ideal choice for those seeking both convenience and a vibrant lifestyle.

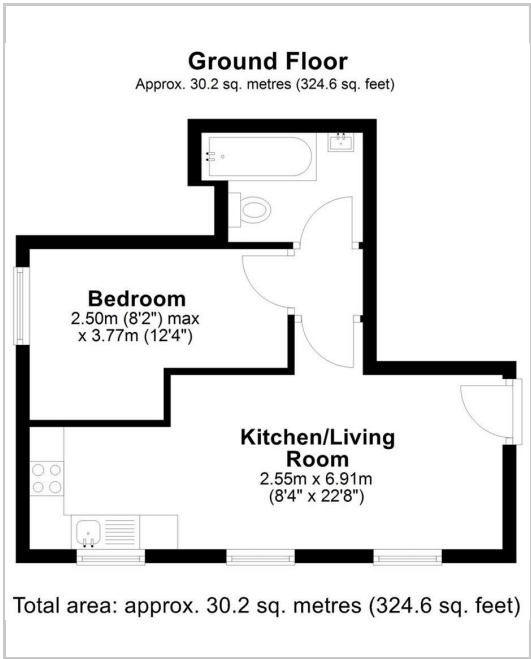
Whether you're commuting to central London or exploring the local area, this flat offers an exceptional living experience with everything you need right on your doorstep. The combination of luxury, location, and lifestyle makes it the perfect place to call home.



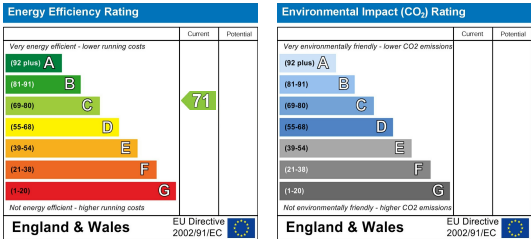
Area Map



Floor Plan



Energy Efficiency Graph



These particulars, whilst believed to be accurate are set out as a general outline only for guidance and do not constitute any part of an offer or contract. Intending purchasers should not rely on them as statements of representation of fact, but must satisfy themselves by inspection or otherwise as to their accuracy. No person in this firms employment has the authority to make or give any representation or warranty in respect of the property.