

Jukes & Co

Estate Agents



Francis Road

, Croydon, CR0 2RT

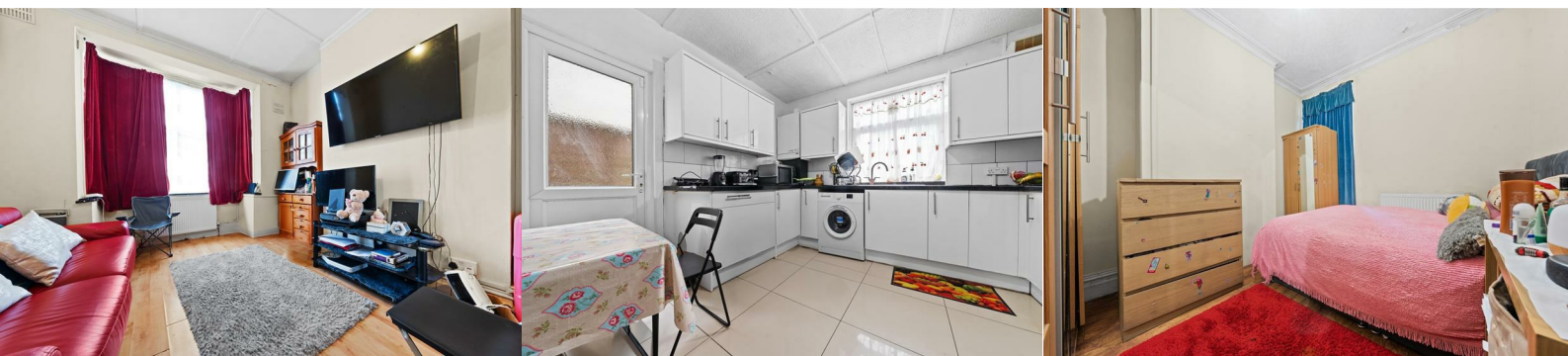
£240,000



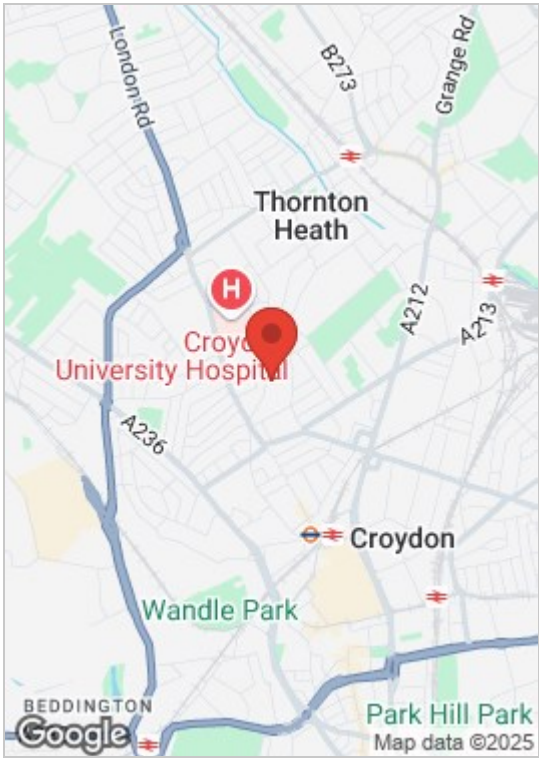
Jukes are pleased to offer this ground floor one bedroom Victorian conversion with it's own garden.

This flat offers great accommodation, having a lounge at the front and a kitchen diner at the rear leading out to a pretty garden, and spacious bedroom.

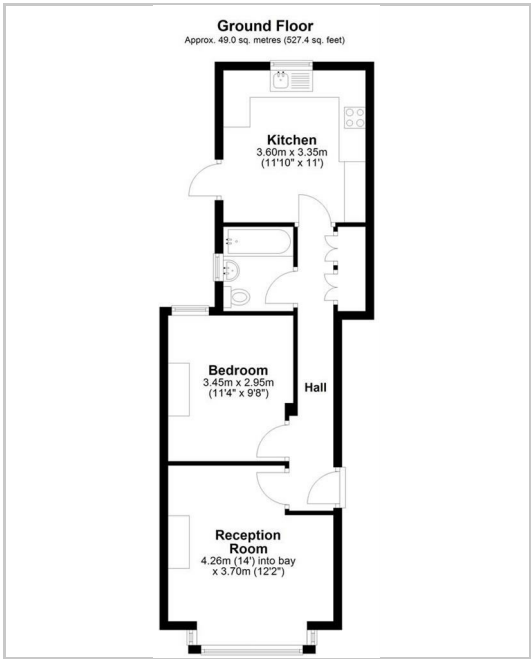
Francis Road is a quiet cul de sac, walking distance to Thornton Heath and West Croydon Station with it's easy links to Victoria, East Croydon, Clapham, London Bridge and several other popular destinations. Close by are shops, bus stops, restaurants, parks and Leisure Centres. Making this an ideal place to live.



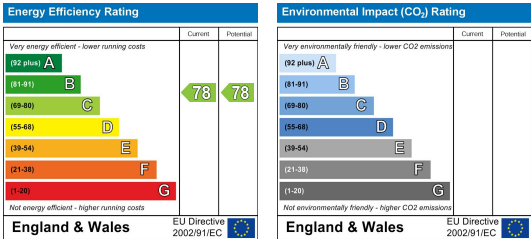
Area Map



Floor Plan



Energy Efficiency Graph



These particulars, whilst believed to be accurate are set out as a general outline only for guidance and do not constitute any part of an offer or contract. Intending purchasers should not rely on them as statements of representation of fact, but must satisfy themselves by inspection or otherwise as to their accuracy. No person in this firms employment has the authority to make or give any representation or warranty in respect of the property.