

Jukes & Co

Estate Agents



Holmesdale Road

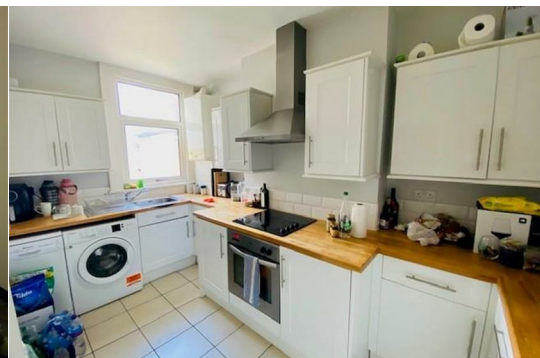
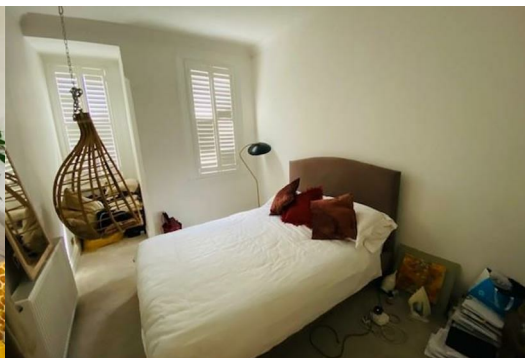
, London, SE25 6PR

£1,700 Per Month



Nestled within a charming Edwardian property, this bright and spacious two-bedroom apartment on the first floor seamlessly blends classic elegance with modern convenience. With its high ceilings, white walls, and light beech flooring, the home radiates an airy and welcoming ambiance. The 15-foot reception room, featuring a striking period fireplace, serves as a perfect space for relaxation and entertaining. Both double bedrooms offer generous proportions, while the contemporary fitted kitchen, complete with quality white goods, and the sleek, modern bathroom suite ensure a comfortable living experience.

The apartment further impresses with a spacious hallway that provides ample storage through its three built-in cupboards, adding to the practicality of the space. Located just half a mile from Norwood Junction Station, the property offers excellent transport links, being only one stop from London Bridge. With the shops and amenities of South Norwood close by, this residence combines convenience with the timeless appeal of period features, making it an ideal home for those seeking a blend of style, comfort, and accessibility.



HALLWAY

Spacious hallway, white walls, 3 built-in storage cupboards, radiator, beech colour wood flooring

RECEPTION ROOM 14'4 x 12'4 (4.37m x 3.76m)

White walls, light beach flooring, feature fireplace with gas fire, radiator, double glazed windows, wooden shutters

KITCHEN 13'7 x 8'10 (4.14m x 2.69m)

Fitted kitchen with white wall and base units, wooden worktops, built-in electric hob and oven, extractor hood, double glazed window, dishwasher, washing machine, fridge, freezer, tiled floor

BEDROOM ONE 14'5 x 9'9 (4.39m x 2.97m)

White walls, double glazed windows with shutters, radiator, carpet

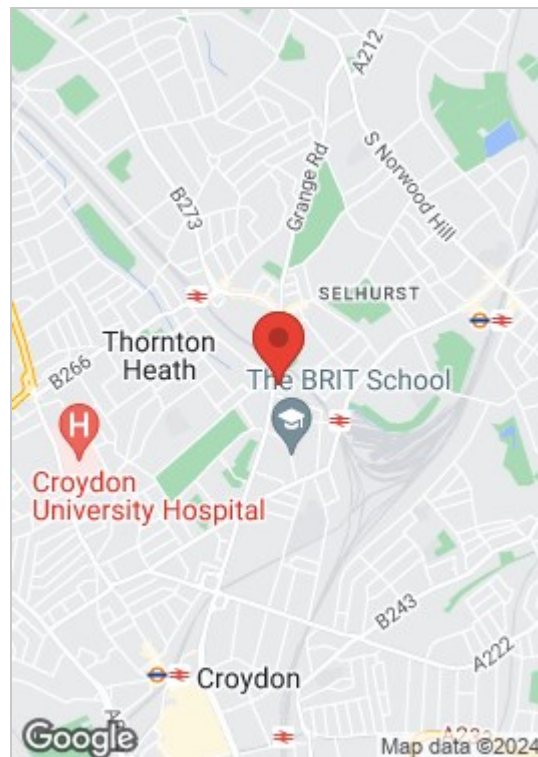
BEDROOM TWO 17'9 x 8'6 (5.41m x 2.59m)

White walls, carpet, double glazed window with shutters

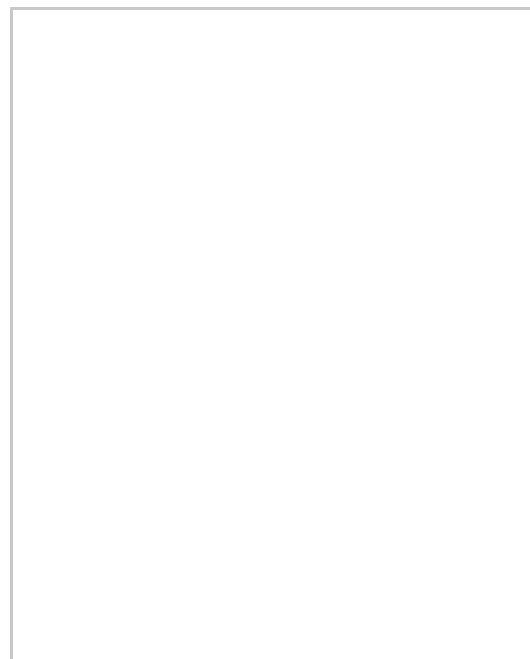
BATHROOM

White bathroom suite comprising bath with shower over, shower screen, wash hand basin, low-flush w.c., 2 frosted double glazed windows

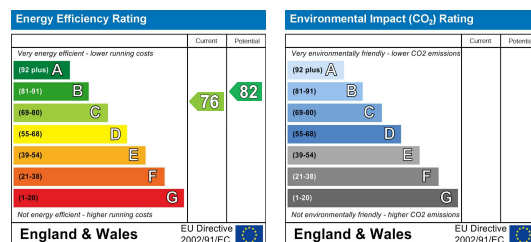
Area Map



Floor Plan



Energy Efficiency Graph



These particulars, whilst believed to be accurate are set out as a general outline only for guidance and do not constitute any part of an offer or contract. Intending purchasers should not rely on them as statements of representation of fact, but must satisfy themselves by inspection or otherwise as to their accuracy. No person in this firm's employment has the authority to make or give any representation or warranty in respect of the property.

Sales and Lettings

76 High Street, South Norwood, London SE25 6EB

T: 020 8653 9393 · F: 020 8771 5551 · E: sales@jukesestateagents.com · E: lettings@jukesestateagents.com

W: jukesestateagents.com