

Jukes & Co

Estate Agents



Holmesdale Road

, London, SE25 6JH

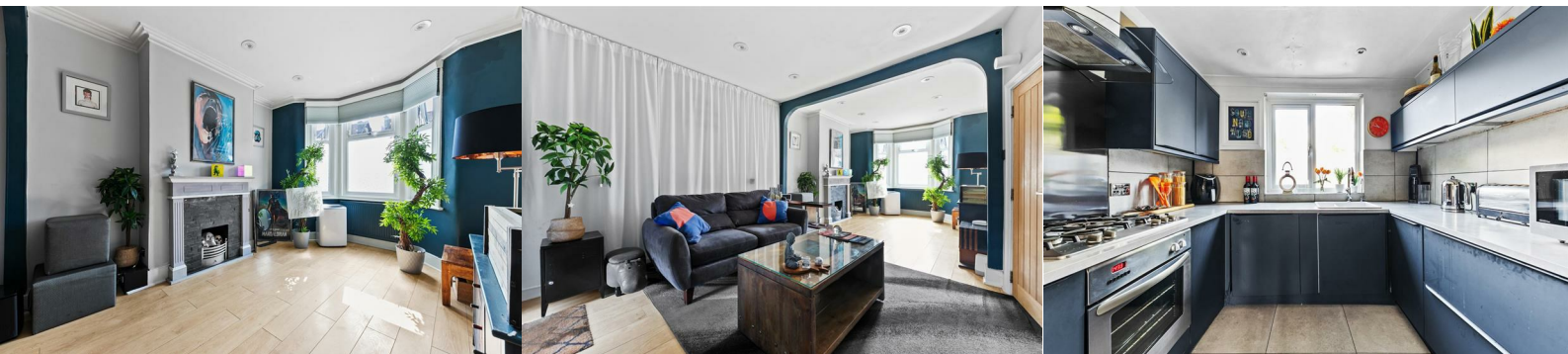
Offers In The Region Of £435,000



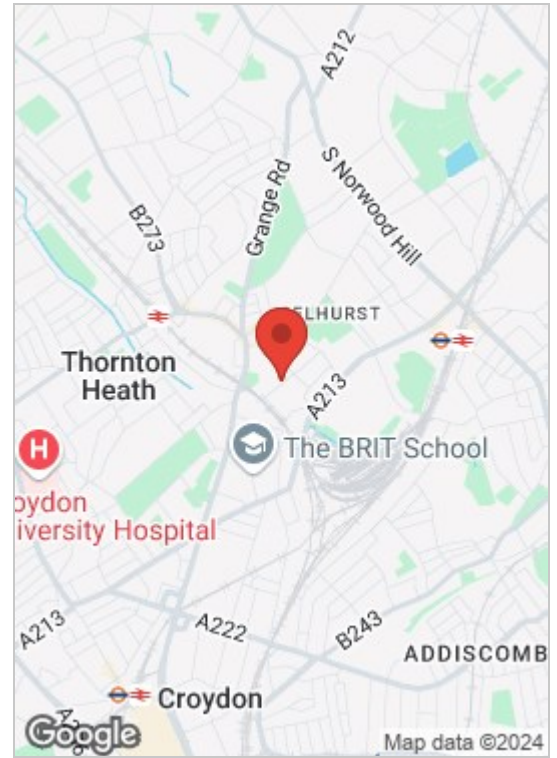
Don't miss the opportunity to make this character-filled Victorian house your new home. Contact us today to arrange a viewing and discover all that this charming property has to offer. A beautifully maintained two-bedroom Victorian house featuring a modern fitted kitchen and a spacious lounge. The property boasts an upstairs modern bathroom, ensuring comfort and style throughout.

As you enter, you'll be captivated by the unique charm and period features of this delightful home. The ground floor boasts two elegant reception rooms, each with ample space for both relaxation and entertaining. High ceilings, original fireplaces, and large double-glazed windows add to the warm and inviting atmosphere, ensuring comfort throughout the seasons. Upstairs, you'll find two generously sized bedrooms, each offering a tranquil retreat at the end of the day. The large upstairs bathroom is a standout feature, offering contemporary fixtures and a spacious layout for ultimate relaxation.

Located close to all local amenities, including shops, restaurants, and parks, this Victorian house offers a convenient and vibrant lifestyle. The excellent transport links from Selhurst, Norwood Junction, and Thornton Heath stations make commuting to central London and beyond quick and easy.



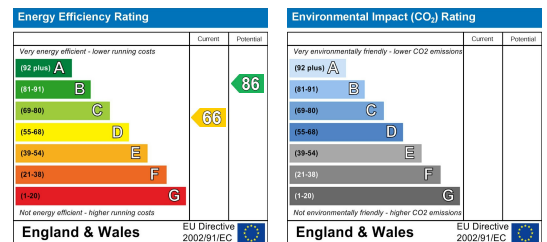
Area Map



Floor Plan



Energy Efficiency Graph



These particulars, whilst believed to be accurate are set out as a general outline only for guidance and do not constitute any part of an offer or contract. Intending purchasers should not rely on them as statements of representation of fact, but must satisfy themselves by inspection or otherwise as to their accuracy. No person in this firm's employment has the authority to make or give any representation or warranty in respect of the property.

Sales and Lettings

76 High Street, South Norwood, London SE25 6EB

T: 020 8653 9393 · F: 020 8771 5551 · E: sales@jukesestateagents.com · E: lettings@jukesestateagents.com

W: jukesestateagents.com