

Jukes & Co

Estate Agents



Selhurst Road

, London, SE25 6LU

£235,000



Discover a beautifully presented one-bedroom flat located in the highly sought-after Clifton Court, SE25. This property boasts a range of desirable features:

Modern Kitchen: Equipped with contemporary appliances and ample counter space, perfect for culinary enthusiasts.

Loads of Storage: Generous storage solutions throughout the flat ensure a clutter-free living space.

Garage: Includes a secure garage, offering additional storage or parking options.

Prime Location:

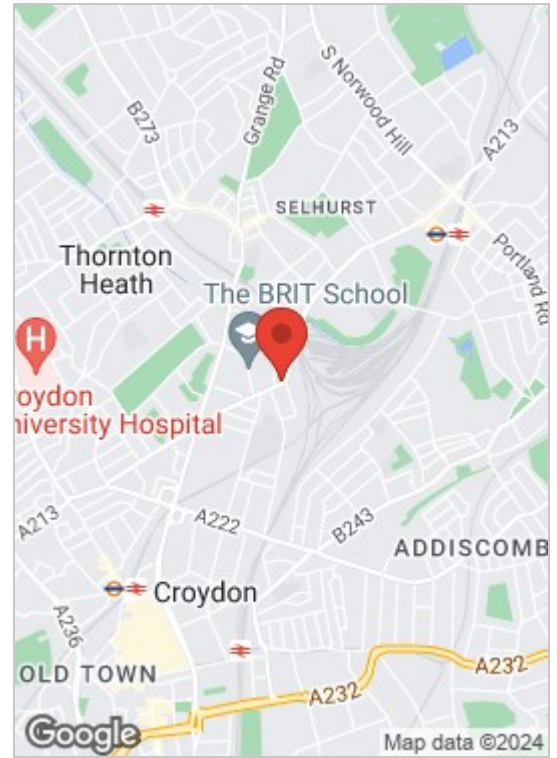
Norwood Junction: Just a short walk away, providing a swift 12-minute train link to London Bridge, making it ideal for commuters.

Selhurst: Easily accessible, offering direct routes to Victoria.

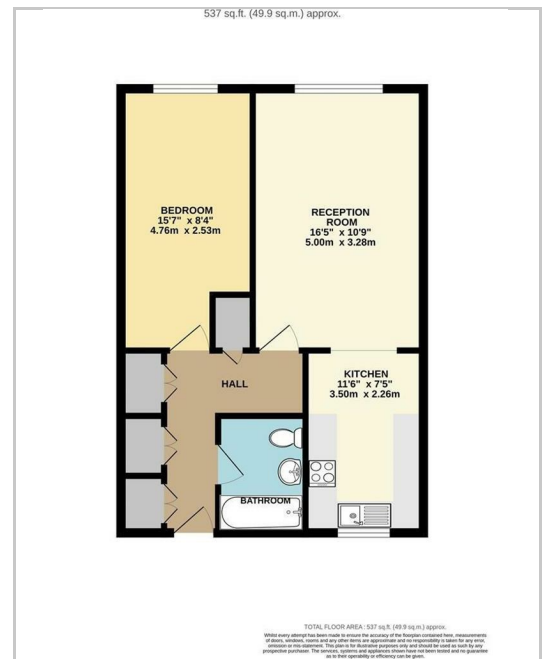
This flat offers a fantastic living experience with its convenient travel links and modern amenities. Perfect for professionals and couples seeking a stylish and practical home.



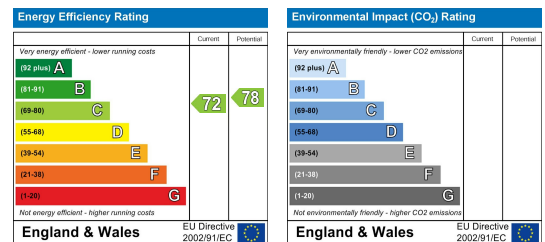
Area Map



Floor Plan



Energy Efficiency Graph



These particulars, whilst believed to be accurate are set out as a general outline only for guidance and do not constitute any part of an offer or contract. Intending purchasers should not rely on them as statements of representation of fact, but must satisfy themselves by inspection or otherwise as to their accuracy. No person in this firm's employment has the authority to make or give any representation or warranty in respect of the property.

Sales and Lettings

76 High Street, South Norwood, London SE25 6EB

T: 020 8653 9393 · F: 020 8771 5551 · E: sales@jukesestateagents.com · E: lettings@jukesestateagents.com

W: jukesestateagents.com