

Jukes & Co

Estate Agents



Westbury Road

, Croydon, CR0 2ES

Asking Price £325,000



Nestled on the vibrant Westbury Road, this charming split-level flat offers an ideal blend of modern living and convenience. The property is perfectly situated within walking distance from East Croydon station, providing excellent transport links to central London and beyond. This makes it an ideal choice for professionals and families alike. The flat is newly decorated, boasting a fresh, contemporary feel throughout its spacious layout.

The accommodation features two generously sized double bedrooms, offering ample space and comfort. The master bedroom benefits from a sleek en-suite bathroom, while the second bedroom is serviced by a modern, well-appointed family bathroom. The heart of the home is the modern fitted kitchen, complete with integrated appliances, providing a perfect setting for culinary enthusiasts. The split-level design adds to the flat's charm, creating a distinct separation between the living areas and the private quarters, enhancing the overall sense of space and privacy.

Additionally, this property comes with the advantage of no onward chain, ensuring a smooth and swift purchasing process. It is offered with a long lease, adding to its appeal for potential buyers. Whether you are looking for a stylish home with convenient commuting options or an investment property in a sought-after location, this flat on Westbury Road stands out as a prime opportunity not to be missed.



Property Features

Hallway

Own front door leading to spacious split-level hallway, stairs upto first floor landing, 2 radiators

Kitchen

10'8" x 8'3" Double glazed window to rear aspect, stainless steel sink unit with mixer taps, Bosch electric oven and hob, hotpoint dishwasher, integrated fridge/freezer, Hotpoint washer/dryer, extractor hood, laminate worktops, range of white wall and base units, laminate flooring, spotlights on track, white brick effect tiles, Worcester boiler housed in cupboard

Reception

12'9" x 10'7" Double glazed window with blinds and curtains to front aspect, leather sofa and matching chair, wall mounted t.v., radiator, shelving, carpet

Bedroom

12'7" x 9'11" Double glazed window with blinds and curtains to front aspect, range of wardrobes, bed frame and mattress, laminate floor, door to ensuite shower room

Bedroom

11'3 x 10'7" Double glazed window with blinds and curtains to rear aspect, radiator, laminate flooring, dado rail, sofa bed

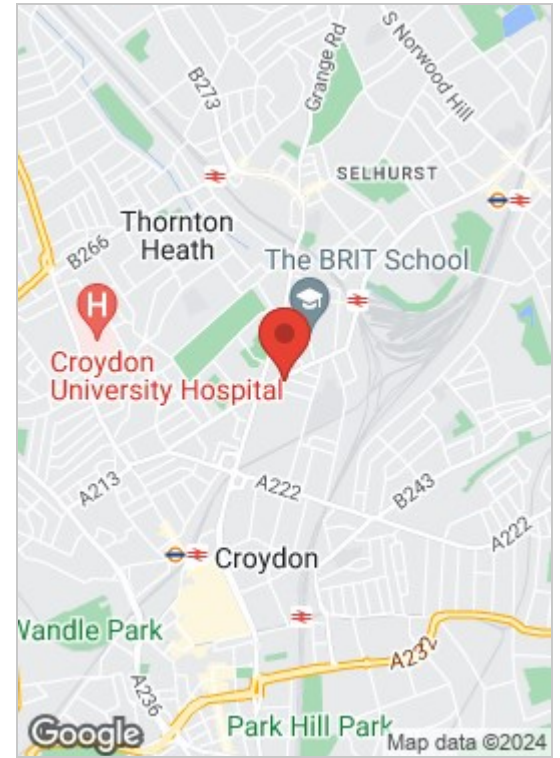
Bathroom

Double glazed frosted window with blind, white suite comprising panel bath and shower attachment, wash hand basin, low-flush w.c., radiator, wall mirror, tiled walls, large storage cupboard, lino floor

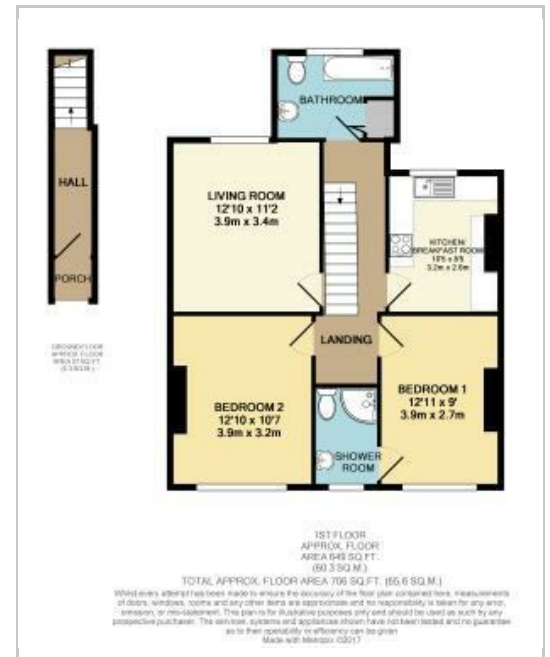
Ensuite shower room

Shower cubicle, low-flush w.c., wash hand basin, white tiled walls, radiator, lino floor, double glazed frosted window, spotlights

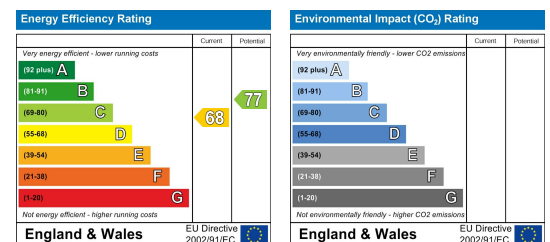
Area Map



Floor Plan



Energy Efficiency Graph



These particulars, whilst believed to be accurate are set out as a general outline only for guidance and do not constitute any part of an offer or contract. Intending purchasers should not rely on them as statements of representation of fact, but must satisfy themselves by inspection or otherwise as to their accuracy. No person in this firm's employment has the authority to make or give any representation or warranty in respect of the property.

Sales and Lettings

76 High Street, South Norwood, London SE25 6EB

T: 020 8653 9393 · F: 020 8771 5551 · E: sales@jukesestateagents.com · E: lettings@jukesestateagents.com

W: jukesestateagents.com