

# Jukes & Co

## Estate Agents



## Manor Road

South Norwood, London, SE25 4TD

Asking Price £425,000



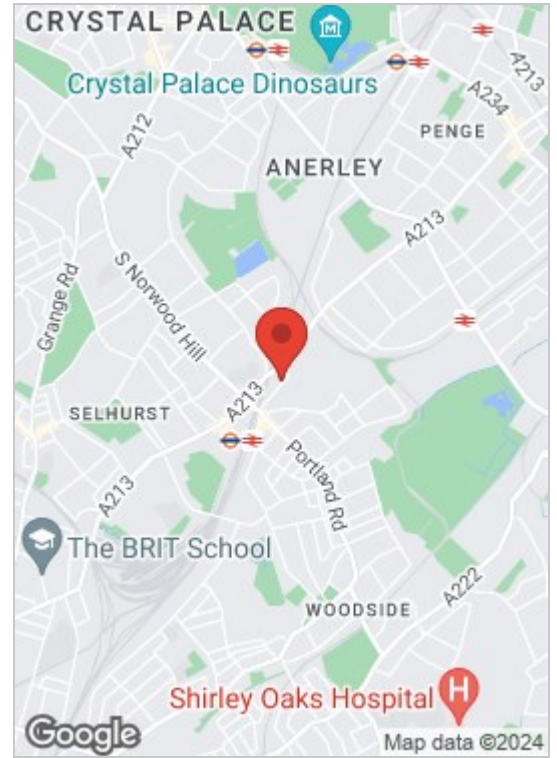
Welcome to this charming 3-bedroom house nestled on Manor Road, just a quarter mile away from Norwood Junction Station and a mere one-stop journey to the bustling heart of London Bridge. This well-maintained freehold property offers a perfect blend of contemporary comfort and classic charm. As you step inside, you are greeted by a stylish kitchen seamlessly connected to a spacious through lounge, creating an inviting space for both family gatherings and entertaining guests.

Upstairs, you'll find a well-appointed bathroom, ensuring the flexibility and ease of access for all residents. The large bedrooms provide ample space for relaxation and personalisation, with plenty of natural light streaming in, creating a warm and welcoming atmosphere throughout.

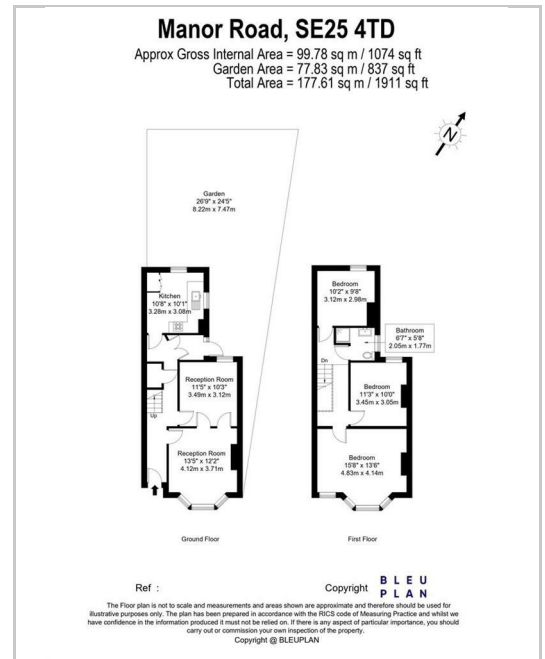
Step outside and discover your own private garden oasis, perfect for al fresco dining, gardening, or simply unwinding after a busy day. With Norwood Junction Station just a short stroll away, commuting to London Bridge and other central locations is effortlessly convenient. Don't miss the opportunity to make this freehold property on Manor Road your home sweet home, blending modern amenities with easy access to the vibrant heart of London.



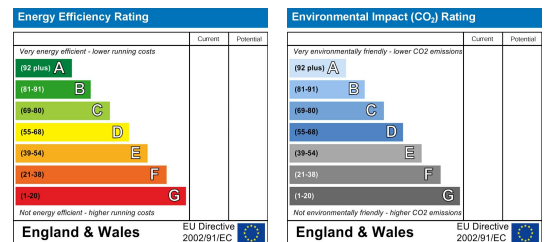
## Area Map



## Floor Plan



## Energy Efficiency Graph



These particulars, whilst believed to be accurate are set out as a general outline only for guidance and do not constitute any part of an offer or contract. Intending purchasers should not rely on them as statements of representation of fact, but must satisfy themselves by inspection or otherwise as to their accuracy. No person in this firm's employment has the authority to make or give any representation or warranty in respect of the property.