

Jukes & Co

Estate Agents



Kidderminster Road

, Croydon, CR0 2UF

Offers Over £220,000



Being Sold via Secure Sale online. Terms & Conditions apply. Starting offers £220,000

Ground Floor Maisonette | Large Private Garden | 603 Sq.Ft Internal space | High Ceilings | Double Glazed Throughout | POTENTIAL TO EXTEND |

Jukes & Co are proud to present this delightful, ground floor Maisonette, with large private garden, located on a popular residential road in the heart of Croydon. This wonderful property benefits from an impressive 603 sq. ft. of living space and offers huge potential to extend and turn into a 2 bedroom flat.

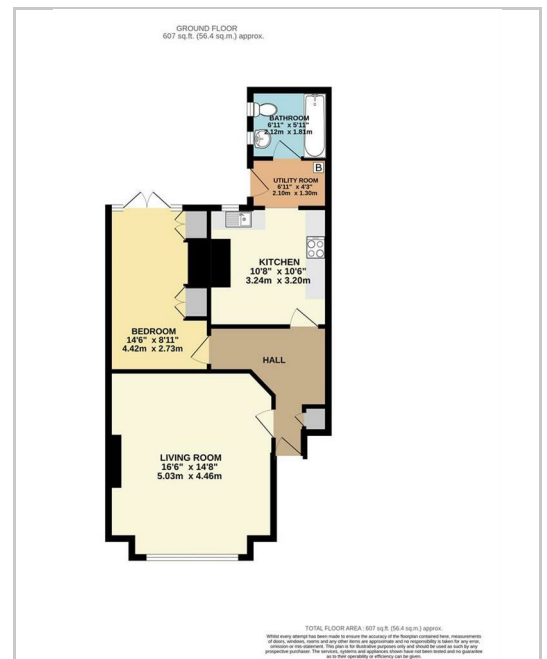
Light and airy throughout, Kidderminster Road is well-presented and briefly comprises; large reception room, a good size double bedroom with high ceiling and direct access to the garden, modern bathroom suite and a separate kitchen with ample storage space.



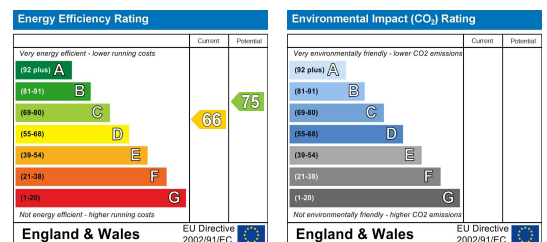
Area Map



Floor Plan



Energy Efficiency Graph



These particulars, whilst believed to be accurate are set out as a general outline only for guidance and do not constitute any part of an offer or contract. Intending purchasers should not rely on them as statements of representation of fact, but must satisfy themselves by inspection or otherwise as to their accuracy. No person in this firm's employment has the authority to make or give any representation or warranty in respect of the property.

Sales and Lettings

76 High Street, South Norwood, London SE25 6EB

T: 020 8653 9393 · F: 020 8771 5551 · E: sales@jukesestateagents.com · E: lettings@jukesestateagents.com

W: jukesestateagents.com