

# Jukes & Co

## Estate Agents



## Holmesdale Road

, London, SE25 6HY

£509,995



Three Bedrooms | Semi Detached | Modern Kitchen | Off-Street Parking | Large Garden/ Garage

Discover the allure of this beautifully presented three double bedroom semi-detached house offered by Jukes & Co. Boasting a spacious lounge, inviting breakfast room, and a modern kitchen, this home exudes contemporary comfort. The property features a recently renovated upstairs bathroom and a convenient separate shower room, along with the luxury of a large garden, off-street parking, and a garage.

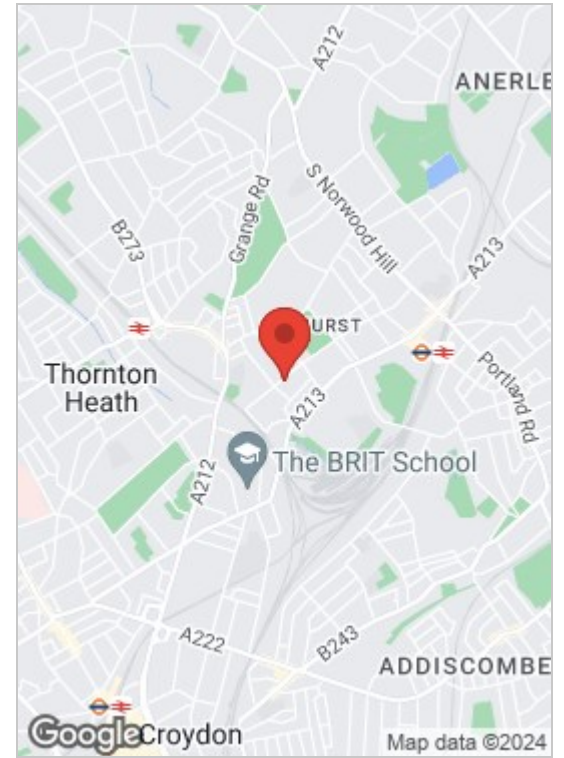
Enjoy the pleasure of stepping into a home that has been tastefully decorated, presenting a move-in-ready opportunity. Nestled in a sought-after area between Selhurst and Norwood Junction, this residence benefits from Norwood Junction's swift 12-minute link to London Bridge, providing easy access to Victoria, Clapham, East Croydon, and other popular destinations. The proximity to the vibrant high street, replete with an array of shops, along with close proximity to schools, bus stops, and parks, makes this location truly exceptional.

Seize the opportunity to make this fantastic location your new home. Call Jukes & Co now to arrange your viewing and experience the comfort and convenience this semi-detached house has to offer.

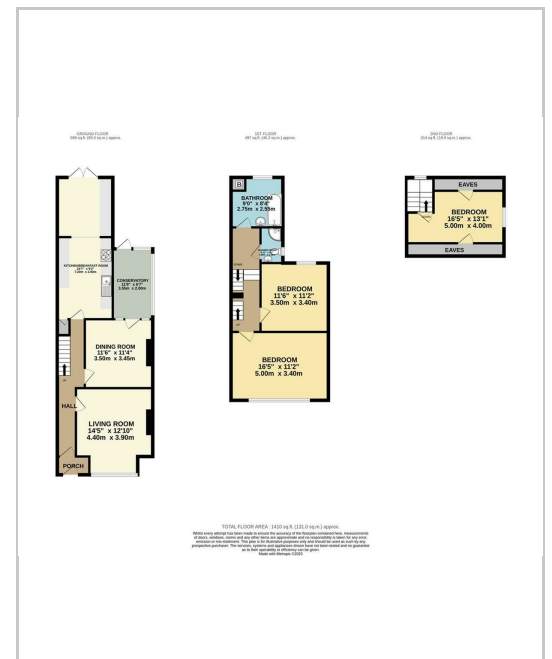


**Tenure**  
Freehold

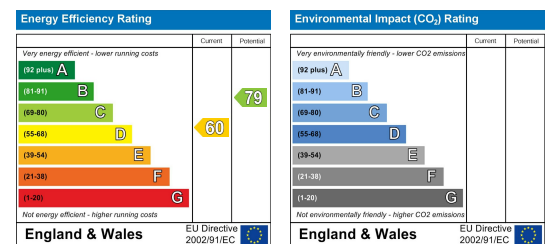
## Area Map



## Floor Plan



## Energy Efficiency Graph



These particulars, whilst believed to be accurate are set out as a general outline only for guidance and do not constitute any part of an offer or contract. Intending purchasers should not rely on them as statements of representation of fact, but must satisfy themselves by inspection or otherwise as to their accuracy. No person in this firm's employment has the authority to make or give any representation or warranty in respect of the property.

### Sales and Lettings

76 High Street, South Norwood, London SE25 6EB

T: 020 8653 9393 · F: 020 8771 5551 · E: sales@jukesestateagents.com · E: lettings@jukesestateagents.com

W: jukesestateagents.com