



## Tallow Close, Dagenham

£2,200 PCM

Available From 2nd July • 1st Floor Bathroom & En Suite Shower Room • Ground Floor Toilet • Excellent Condition  
• 2 Allocated Parking Spaces • Lounge/Diner • Short Walk To Becontree Station • Double Glazing & Gas Central Heating





Immaculate 3-bed terraced house near Becontree Station. En suite, double glazing, gas heating, ground floor toilet, lounge/diner, 2 parking spaces. Ideal for modern living. Move in on 2nd July.

Council Tax band: D

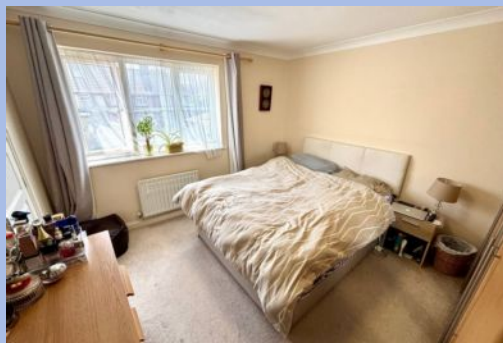
Tenure: Freehold

EPC Energy Efficiency Rating: C

EPC Environmental Impact Rating: C



- Available From 2nd July
- 1st Floor Bathroom & En Suite Shower Room
- Ground Floor Toilet
- Excellent Condition
- 2 Allocated Parking Spaces
- Lounge/Diner
- Short Walk To Becontree Station
- Double Glazing & Gas Central Heating





You can include any text here. The text can be modified upon generating your brochure.