

## Lullington Road, Dagenham

£1,350 pcm Leasehold

1st Floor Maisonette • Available Now • Shared Garden • Newly Decorated • Walking Distance To Becontree Station • Double Glazed • Gas Central Heating • Permit Parking On Street In Marked Bays • Modern Kitchen • Private Loft Space





Conveniently located 1st floor maisonette near Becontree Station. 1 bedroom, modern kitchen, private loft, shared garden, permit parking. Easy commute options.

Council Tax band: TBD

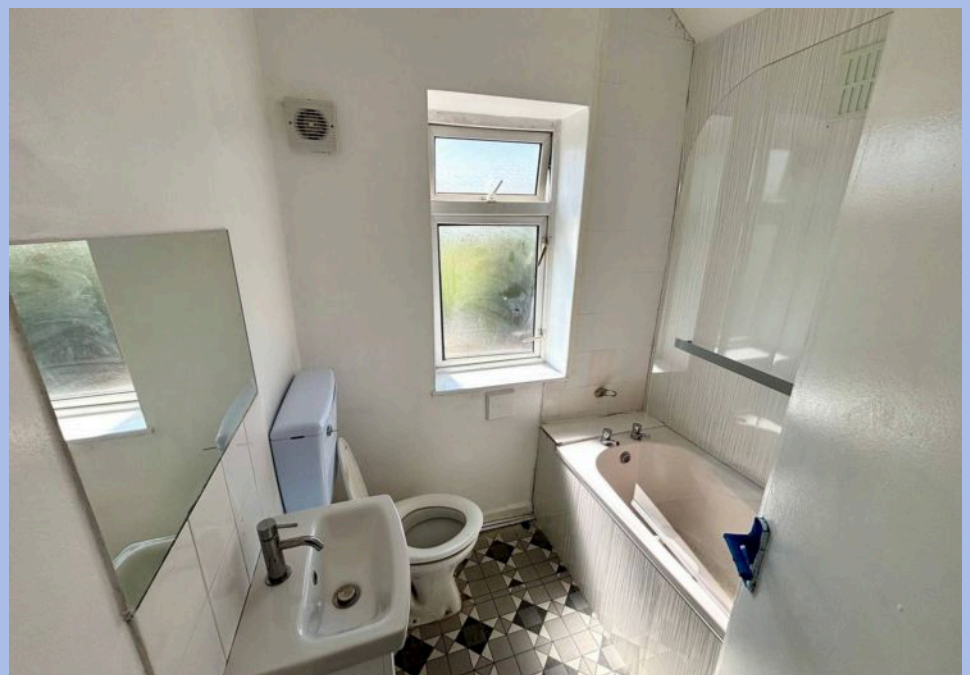
Tenure: Leasehold

EPC Energy Efficiency Rating: C

EPC Environmental Impact Rating:



- 1st Floor Maisonette
- Available Now
- Shared Garden
- Newly Decorated
- Walking Distance To Becontree Station
- Double Glazed
- Gas Central Heating
- Permit Parking On Street In Marked Bays
- Modern Kitchen
- Private Loft Space





You can include any text here. The text can be modified upon generating your brochure.