



## Hatfield Road, Dagenham

£365,000 Freehold

CHAIN FREE • Extended Kitchen Diner • Through Lounge • Easy Access To Heathway Station • In Need Of Some Modernisation • 1st Floor Shower Room • Double Glazing • Gas Central Heating • On Street Permit Parking • Great Potential To Improve



**Stoneshaw**



CHAIN FREE 2-bed terraced house with great potential. Extended kitchen diner, through lounge, close to Heathway Station. Needs modernisation but bright rooms offer transformation. 50ft outdoor oasis with patio, lawn, raised flower beds, shed, and entertainment possibilities.

Council Tax band: C

Tenure: Freehold



- CHAIN FREE
- Extended Kitchen Diner
- Through Lounge
- Easy Access To Heathway Station
- In Need Of Some Modernisation
- 1st Floor Shower Room
- Double Glazing
- Gas Central Heating
- On Street Permit Parking
- Great Potential To Improve



### **Porch**

Via double glazed door, ceramic tiled floor, hardwood door to hallway.

### **Hallway**

Fitted carpet, radiator, built in cupboard, stairs to 1st floor, door to through Lounge.

### **Through Lounge**

21' 5" x 12' 8" (6.53m x 3.86m)

narrowing to 2.982m. Fitted carpet, 2 double radiators, feature fire place, double glazed window to front aspect, sliding door to

### **Kitchen/Diner**

Eye and base level units, marble effect work tops, space and plumbing for washing machine, fridge, freezer, cooker and gas hob. Ceramic tiled splash backs, part vinyl floor, part fitted carpet, radiator, double glazed windows and door to garden.

### **Landing**

Fitted carpet, loft access, doors to

### **Bedroom 1**

14' 11" x 9' 11" (4.55m x 3.03m)

with 1st measurement plus wardrobe recess. Fitted carpet, fitted wardrobes, double radiator, double glazed window to front aspect.

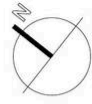
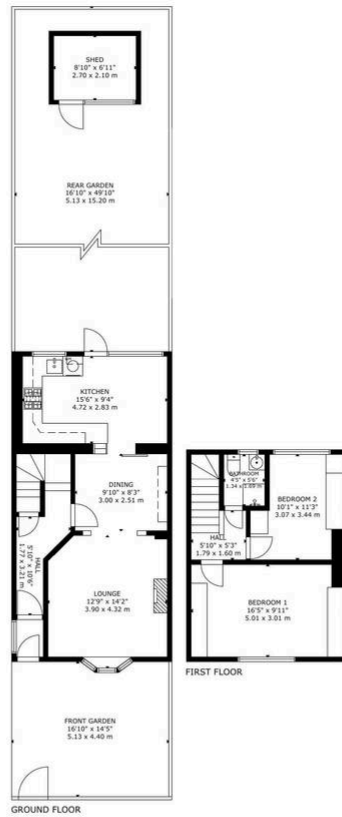
### **Bedroom 2**

11' 5" x 8' 1" (3.49m x 2.47m)

at maximum point. Fitted carpet, radiator, fitted wardrobes, built in cupboard housing hot water tank, double glazed window to rear aspect.

### **Shower Room**

3 piece suite comprising low level w/c, wash basin, shower cubicle with built in shower, ceramic tiled walls, fitted carpet, double glazed obscure window to rear aspect.



GROSS INTERNAL AREA  
TOTAL: 82 m<sup>2</sup>/880 sq.ft  
GROUND FLOOR: 49 m<sup>2</sup>/524 sq.ft, FIRST FLOOR: 33 m<sup>2</sup>/356 sq.ft  
EXCLUDED AREAS: REAR GARDEN: 72 m<sup>2</sup>/777 sq.ft, FRONT GARDEN: 22 m<sup>2</sup>/238 sq.ft, SHED: 7 m<sup>2</sup>/78 sq.ft  
SIZE AND DIMENSIONS ARE APPROXIMATE; ACTUAL MAY VARY



You can include any text here. The text can be modified upon generating your brochure.