

Heathway, Dagenham

£410,000 Freehold

3 Bedroom Terraced House • Excellent Condition Throughout • Walking Distance To Heathway Station • Gas Central Heating (Untested) • Double Glazed • Garden Room • Very Well Maintained Garden • Modern Kitchen • Ground Floor Bathroom • Close To Schools, Shops & Bus Routes

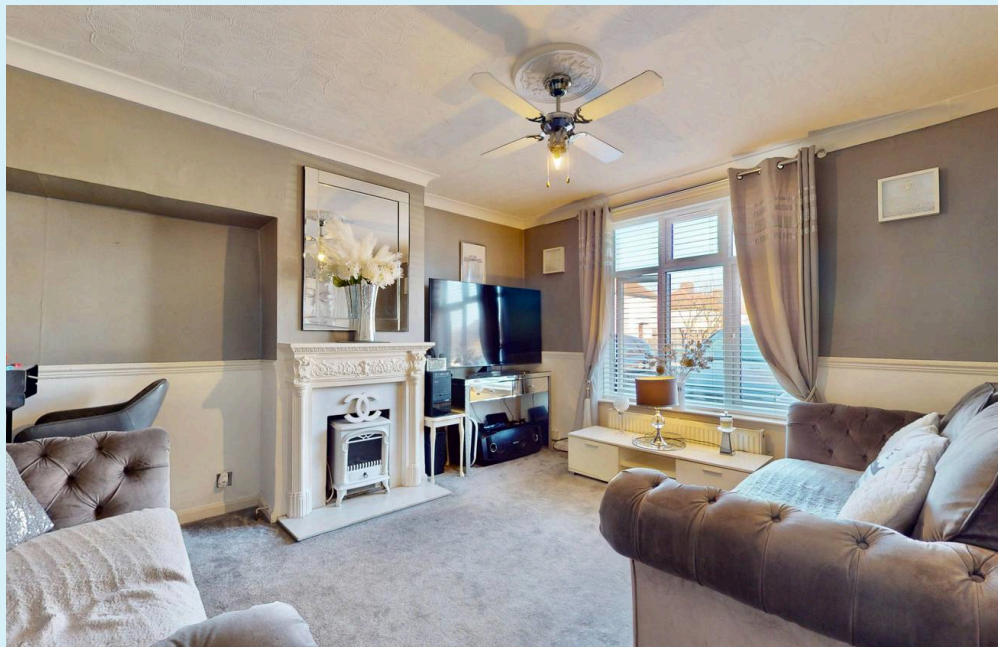


CHAIN FREE - Well-presented 3-bed terraced house near Heathway Station. Modern kitchen, garden room, gas central heating, and ground floor bathroom. Serene garden with shed and permit parking available. Close to schools, shops, and bus routes for a convenient lifestyle. Council Tax band: C

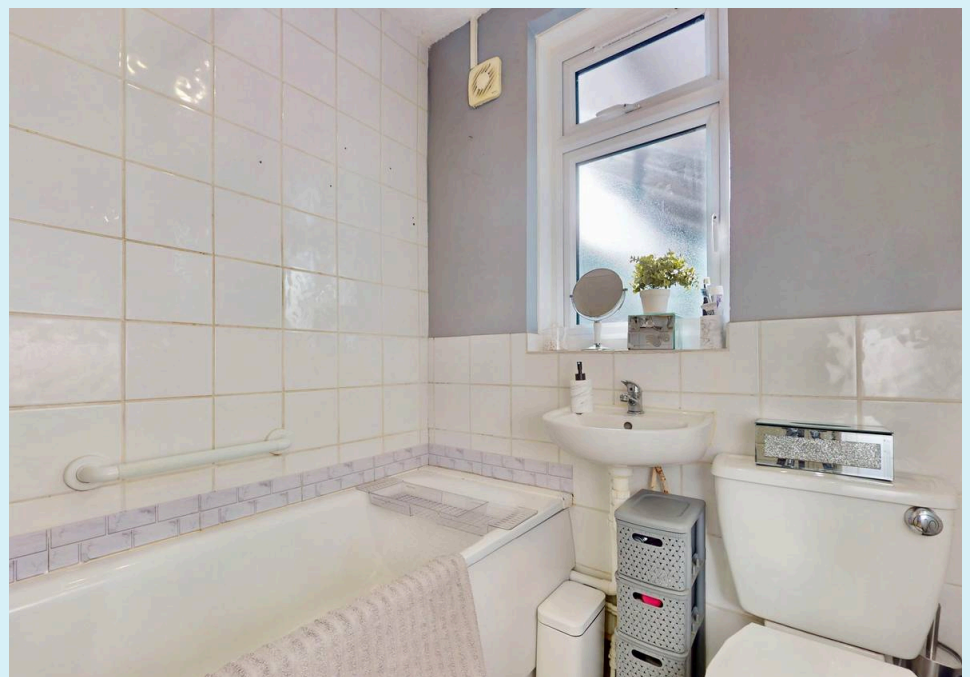
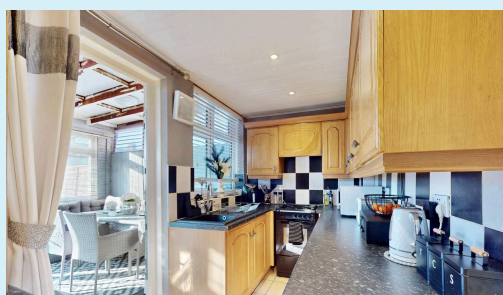
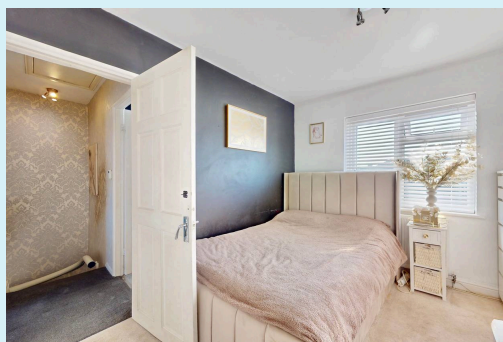
Tenure: Freehold

EPC Energy Efficiency Rating: D

EPC Environmental Impact Rating: D



- 3 Bedroom Terraced House
- Excellent Condition Throughout
- Walking Distance To Heathway Station
- Gas Central Heating (Untested)
- Double Glazed
- Garden Room
- Very Well Maintained Garden
- Modern Kitchen
- Ground Floor Bathroom
- Close To Schools, Shops & Bus Routes



Hallway

Via hardwood door, laminate flooring, radiator, stairs to 1st floor, storage cupboard with space for fridge freezer, doors to

Lounge

13' 7" x 11' 9" (4.14m x 3.57m)

Fitted carpet, feature fire place, radiator, double glazed uPVC window to front aspect.

Bathroom

3 piece suite comprising low level w/c, wash hand basin, panel enclosed bath with electric shower, radiator, ceramic tiled splash backs, vinyl flooring, double glazed uPVC obscure window to garden room.

Kitchen

11' 9" x 6' 0" (3.58m x 1.83m)

Eye and base level units, granite effect work tops, space and plumbing for gas cooker and washing machine, recently fitted wall mounted gas combi boiler (Untested), ceramic tiled splash backs and floor, radiator, composite sink with mixer tap, double glazed uPVC window and door to garden room.

Garden Room

Decked flooring, double glazed uPVC windows and doors to garden.

Landing

Fitted carpet, loft access via pull down ladder, doors to

Bedroom 1

14' 7" x 9' 1" (4.45m x 2.77m)

with 1st measurement plus wardrobe recess. Fitted carpet, double radiator, flat plastered walls, fitted wardrobe, double glazed uPVC window to front aspect.

Bedroom 2

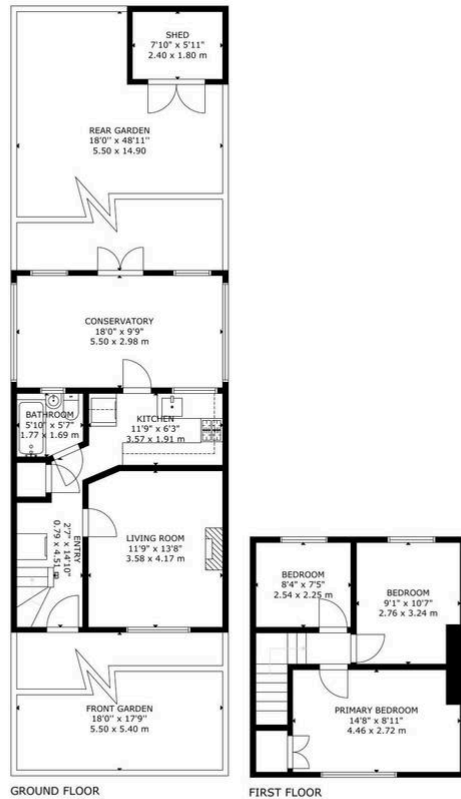
10' 9" x 9' 1" (3.28m x 2.78m)

narrowing to 2.426m. Fitted carpet, radiator, flat plastered ceiling and walls, double glazed uPVC window to rear aspect.

Bedroom 3

8' 5" x 7' 7" (2.56m x 2.32m)

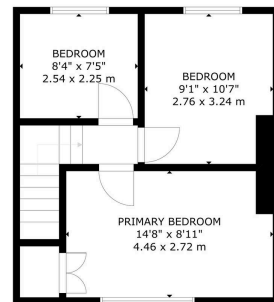
Fitted carpet, radiator, flat plastered ceiling, double glazed uPVC window to rear aspect.



GROSS INTERNAL AREA
TOTAL: 84 m²/912 sq ft
GROUND FLOOR: 51 m²/553 sq ft, FIRST FLOOR: 33 m²/359 sq ft
EXCLUDED AREAS: FRONT GARDEN: 30 m²/319 sq ft, REAR GARDEN: 82 m²/881 sq ft
SIZE AND DIMENSIONS ARE APPROXIMATE, ACTUAL MAY VARY



GROSS INTERNAL AREA
TOTAL: 84 m²/912 sq ft
GROUND FLOOR: 51 m²/553 sq ft, FIRST FLOOR: 33 m²/359 sq ft
EXCLUDED AREAS: FRONT GARDEN: 30 m²/319 sq ft, REAR GARDEN: 82 m²/881 sq ft
SIZE AND DIMENSIONS ARE APPROXIMATE, ACTUAL MAY VARY



GROSS INTERNAL AREA
TOTAL: 84 m²/912 sq ft
GROUND FLOOR: 51 m²/553 sq ft, FIRST FLOOR: 33 m²/359 sq ft
EXCLUDED AREAS: FRONT GARDEN: 30 m²/319 sq ft, REAR GARDEN: 82 m²/881 sq ft
SIZE AND DIMENSIONS ARE APPROXIMATE, ACTUAL MAY VARY



You can include any text here. The text can be modified upon generating your brochure.