

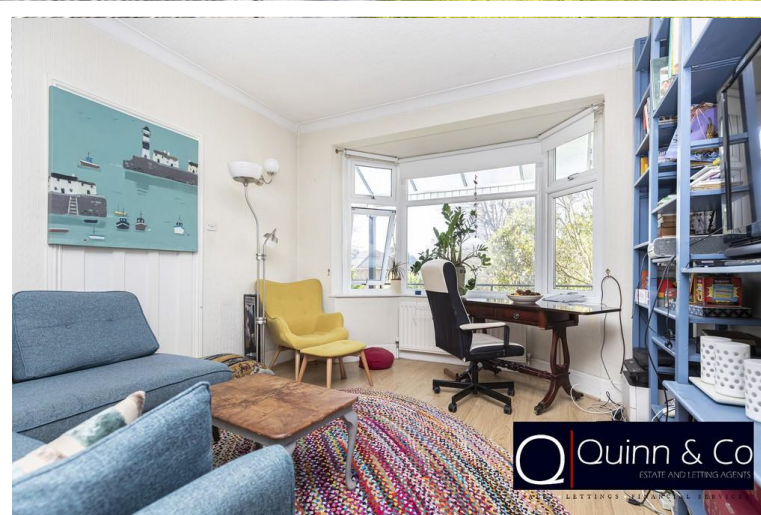


Charminster Avenue, Bournemouth

- Four bedrooms
- Chalet Bungalow
- Generous size rear garden
- Tree lined avenue

Offers In Excess Of £384,999
EPC Rating 'D'





Property Description

Quinn & Co are delighted to present to the market this well proportioned four bedroom detached chalet bungalow located in this desirable tree lined avenue. The property offers accommodation over two floors with the benefit of a front garden and good size rear garden.

The property is spacious and comprises of two large double bedrooms on the ground floor, an open plan lounge/diner, kitchen and family bathroom on the ground floor with two double bedrooms upstairs.

The front garden has potential to create off-road parking (STPP).

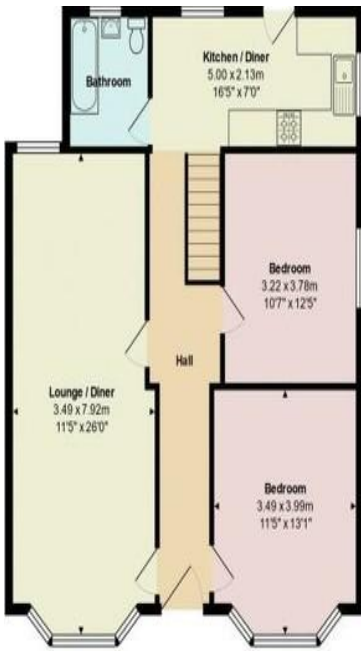
The property would make an excellent family home and is in great school catchment.







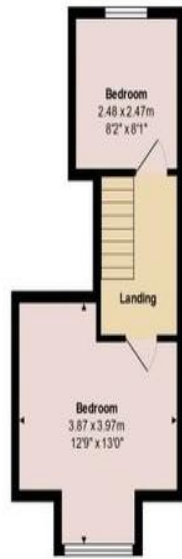




Ground Floor

Total Area: 104.0 m² ... 1120 ft²

All measurements are approximate and for display purposes only



1st Floor



413-415 Charminster
Road
Bournemouth
Dorset
BH8 9QT

www.quinnandco.co.uk
sales@quinnandco.co.uk
01202 512299

Consumer Protection from Unfair Trading Regulations 2008.

The Agent has not tested any apparatus, equipment, fixtures and fittings or services and so cannot verify that they are in working order or fit for the purpose. A Buyer is advised to obtain verification from their Solicitor or Surveyor. References to the Tenure of a Property are based on information supplied by the Seller. The Agent has not had sight of the title documents. A Buyer is advised to obtain verification from their Solicitor. Items shown in photographs are NOT included unless specifically mentioned within the sales particulars. They may however be available by separate negotiation. Buyers must check the availability of any property and make an appointment to view before embarking on any journey to see a property.