



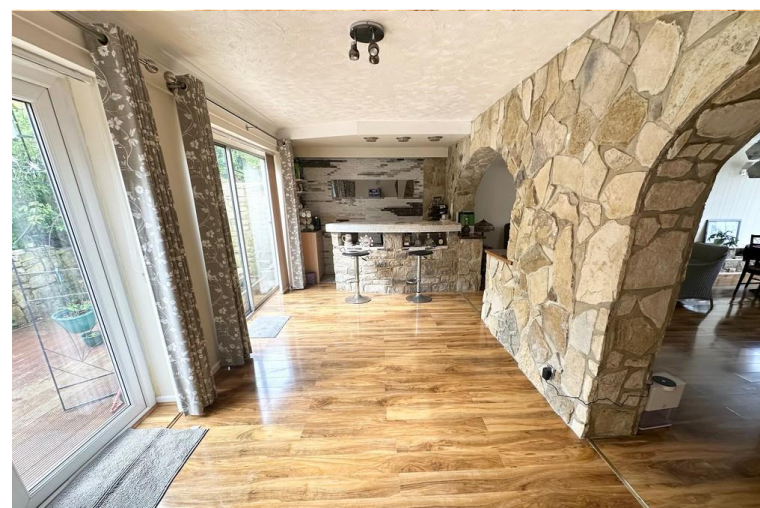
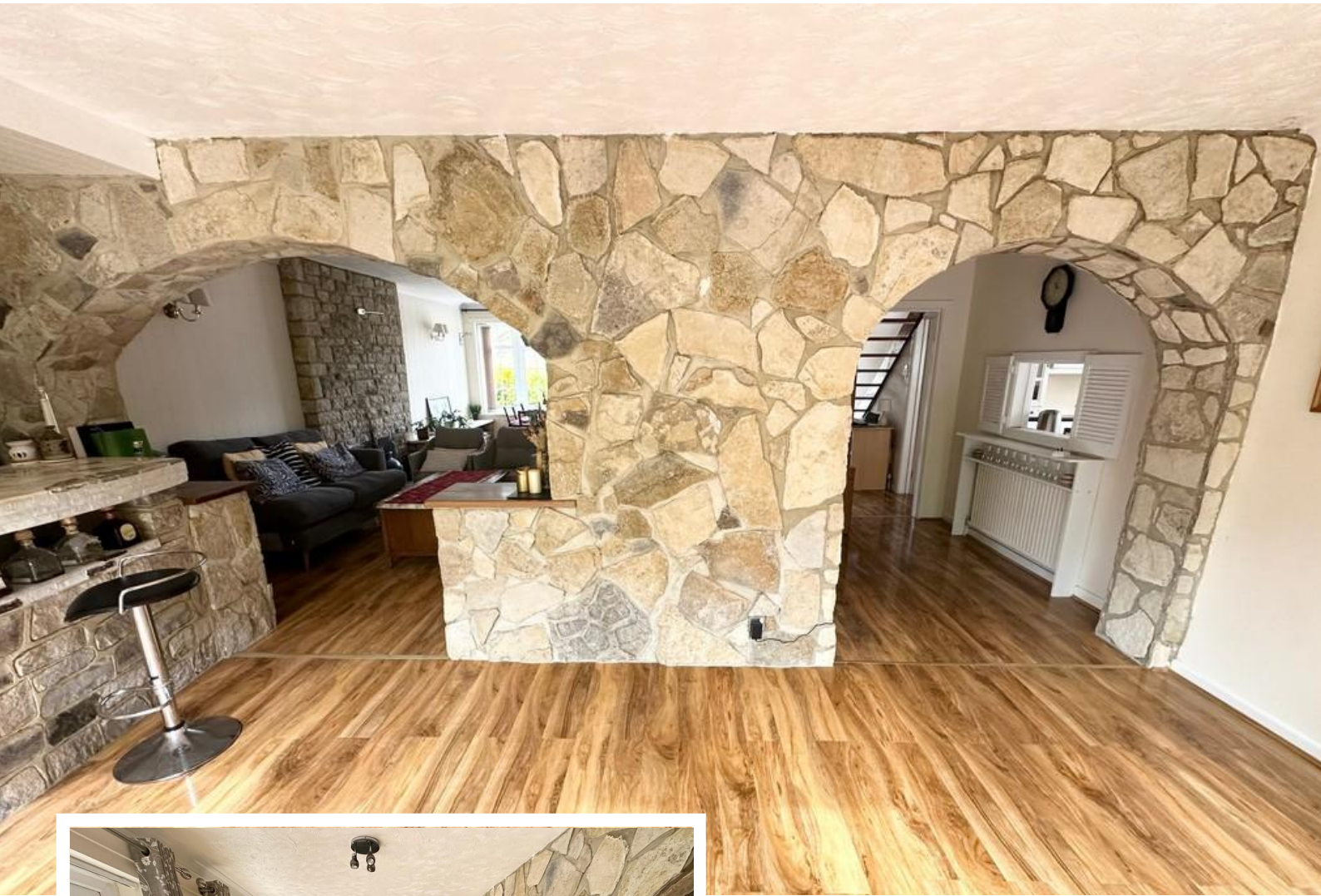
Q Quinn & Co
ESTATE AND LETTING AGENTS

**Normanhurst Avenue, Queens Park,
Bournemouth**

- 5 BEDROOMS
- ELEVATED PLOT
- QUEENS PARK
- LARGE TIERED REAR GARDEN

£599,000
EPC Rating 'E'





Property Description

SUMMARY

Spacious detached house, with generous sized driveway leading to integral garage providing further parking or storage.

The ground floor comprises of well fitted kitchen with space for fridge/freezer, dish washer, washing machine, oven and great amount of cupboard space; sizeable living/dining area with BUILT IN BAR ideal for entertaining and ground floor double bedroom with ENSUITE shower room.

The first floor consists of three double bedrooms, single room/office ideal for those working from home, large shower room, anterior balcony and patio doors lead off of the landing to rear flat roof.

The substantial tiered garden is south-facing and boasts a patio area, summer house with power and light and also a storage shed.

THIS PROPERTY IS OFFERED WITH NO FORWARD CHAIN- MUST BE SEEN!







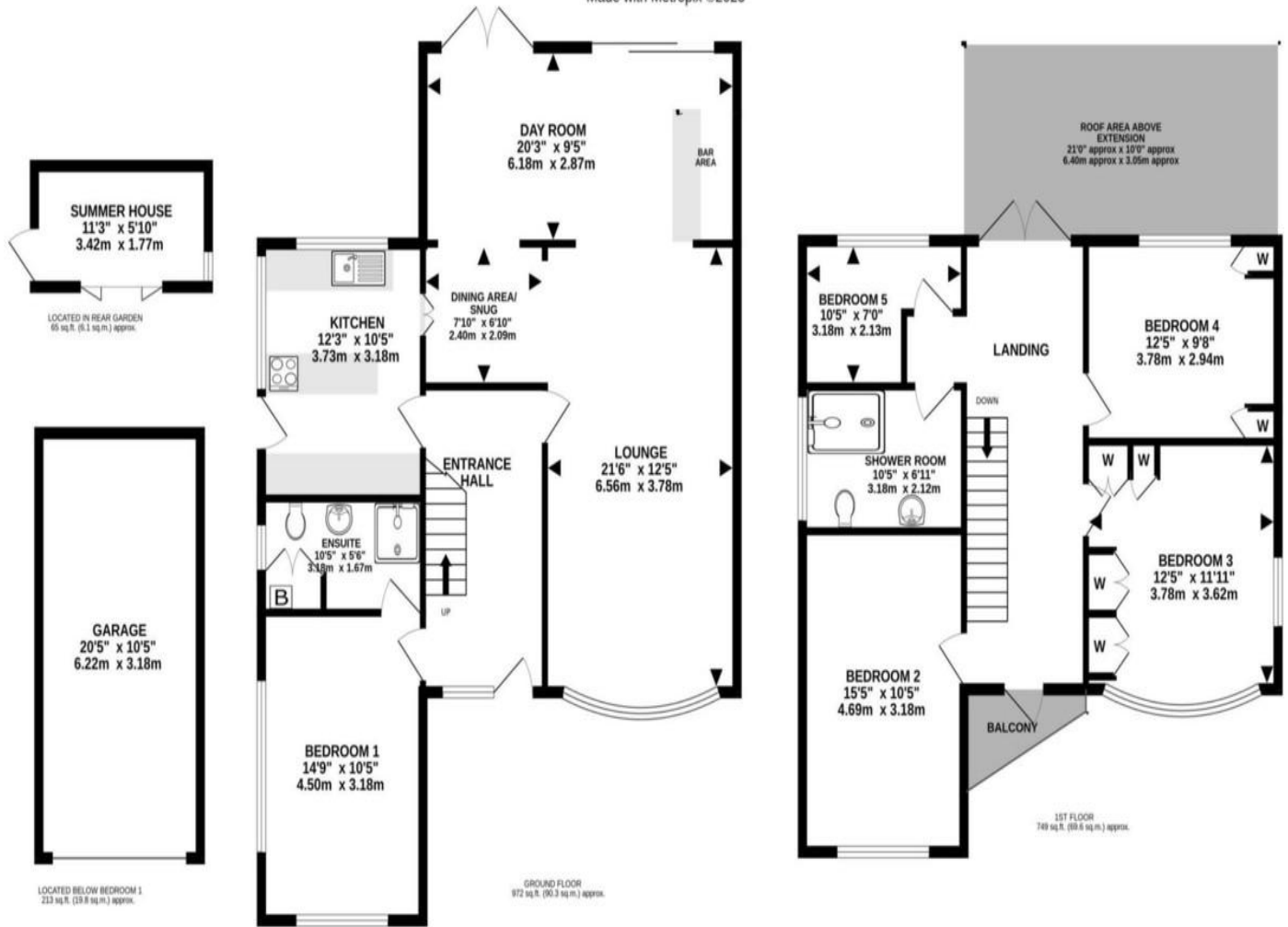


NOT INCLUDING BALCONY AND ROOF AREA

TOTAL FLOOR AREA : 1999 sq.ft. (185.7 sq.m.) approx.

Whilst every attempt has been made to ensure the accuracy of the floorplan contained here, measurements of doors, windows, rooms and any other items are approximate and no responsibility is taken for any error, omission or mis-statement. This plan is for illustrative purposes only and should be used as such by any prospective purchaser. The services, systems and appliances shown have not been tested and no guarantee as to their operability or efficiency can be given.

Made with Metropix ©2023



413-415 Charminster
Road
Bournemouth
Dorset
BH8 9QT

www.quinnandco.co.uk
sales@quinnandco.co.uk
01202 512299

Consumer Protection from Unfair Trading Regulations 2008.

The Agent has not tested any apparatus, equipment, fixtures and fittings or services and so cannot verify that they are in working order or fit for the purpose. A Buyer is advised to obtain verification from their Solicitor or Surveyor. References to the Tenure of a Property are based on information supplied by the Seller. The Agent has not had sight of the title documents. A Buyer is advised to obtain verification from their Solicitor. Items shown in photographs are NOT included unless specifically mentioned within the sales particulars. They may however be available by separate negotiation. Buyers must check the availability of any property and make an appointment to view before embarking on any journey to see a property.