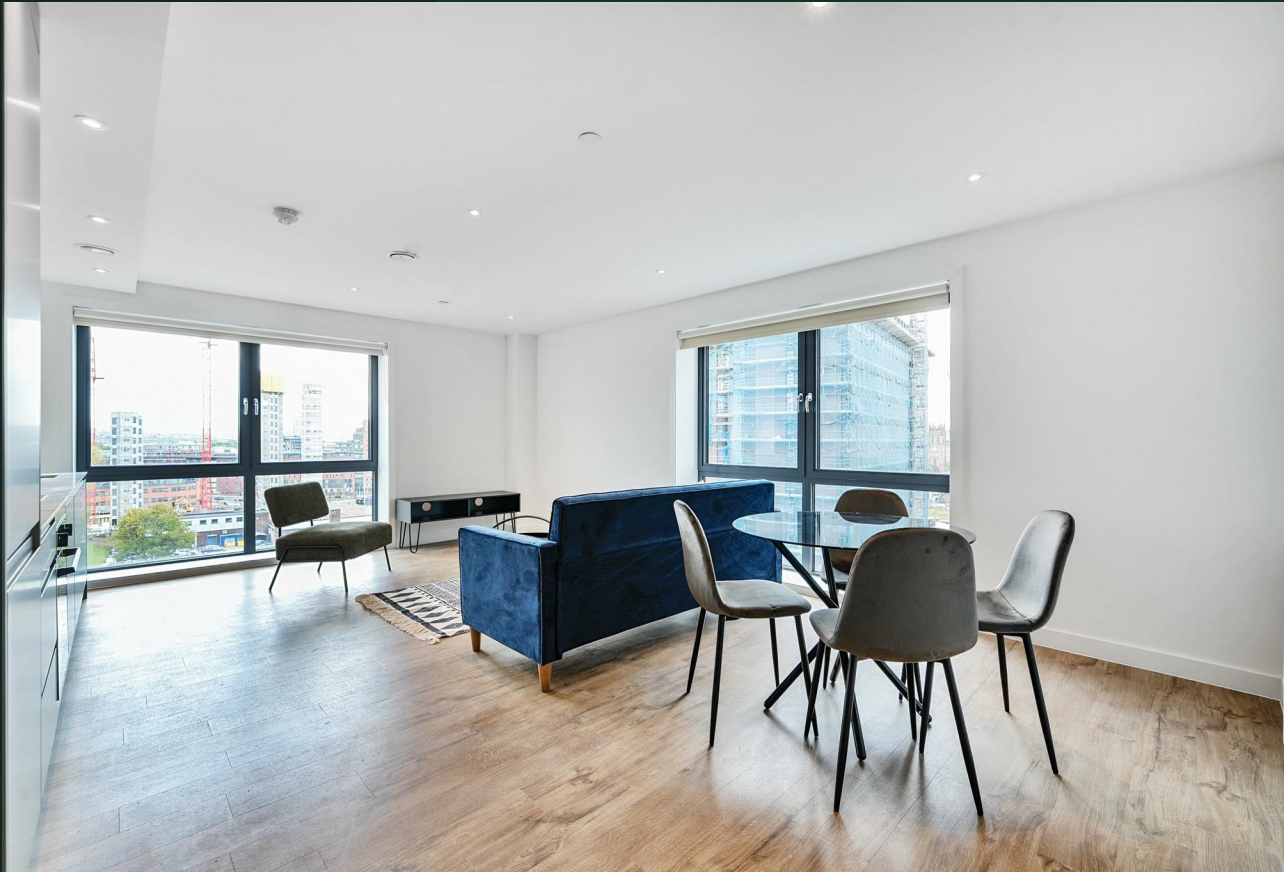


Saxton Lane, LS9



PROPERTY ADDRESS
B812
Phoenix Saxton Lane
Leeds
LS9 8GJ

Energy Efficiency Rating		
	Current	Potential
Very energy efficient - lower running costs		
(92 plus) A		
(81-91) B	83	83
(69-80) C		
(55-68) D		
(39-54) E		
(21-38) F		
(1-20) G		
Not energy efficient - higher running costs		
England & Wales	EU Directive 2002/91/EC	

vision

We look at
estate agency
differently.

vision

Call Us
01132440251

Email Us
leeds@vision-properties.co.uk

- Available now
- Brand new apartment
- Furnished
- Concierge
- Gym for residents

We're pleased to offer the first chance to rent at this fantastic new build development. This spacious eighth floor apartment provides luxurious and contemporary living in the new landmark development at Phoenix.

The apartment is furnished and briefly comprises a bright and airy open plan living, kitchen and dining area with integrated appliances, two double bedrooms, one with an ensuite, and a main bathroom. The property benefits from high spec fixtures and fittings throughout and has floor-to-ceiling windows with stunning views of the Leeds skyline.

Phoenix is close to all the amenities and transport links of the city centre. The development offers numerous facilities for residents including a concierge service, state of the art gym and communal courtyard.

Parking available for an extra cost.

Available now subject to acceptable referencing.

Rent: £1,375 per calendar month
Holding deposit: £317.30
Deposit: Zero

*There is no deposit to pay. Tenants instead pay a fee to Reposit which is the equivalent of one week's rent. This is split equally between tenants and is subject to a minimum of £150. For further details of how Reposit works, please visit their website.

