

An architectural rendering of a modern residential development. The scene shows a row of colorful, multi-story houses with unique facades. On the left, a house has a grey facade with a diamond-shaped pattern. Next to it is a darker house with a similar pattern. To the right is a taller house with a reddish-brown facade. People are shown walking on a paved path, some pushing a stroller, and others standing near bicycles parked in a rack. The sky is blue with scattered clouds and a flock of birds flying in a circular pattern.

Kelham Cube Terrace

One Bedroom Houses

Beautifully bold & timeless

Open plan kitchen /living/dining space

Only one bed block of houses at Kelham Central

Kelham Central

Inspirational and vibrant: the Kelham Central demonstrates that there is a different and better way to live within in our cities. Ripe with potential, a city shouldn't just be a place you come to work – it should be where you want to make your home.

Sustainability is our bedrock. By challenging the status quo, we want Kelham Central to start a chain reaction across the UK house-building industry, creating sustainable communities, in low-carbon developments across the country.

Location Key

The Show Apartment	1	The Gardens	6
Garden Apartments	2	The Row	7
Garden Apartments	3	Coming Soon	8
Cube Terraces	4	The Warehouses	9
Kelham Townhouses	5	Coming Soon	10



Amenity

This is city centre living, but not as you know it. Kelham Central's location puts it in a league of its own.

Food & drink

Domo - 2 minutes

Hymn to Ninkasi - 2 minutes

Bakers Yard Bakery - 2 minutes

Salt Sheffield - 4 minutes

Pina - 10 minutes

Kommune - 10 minutes

Peddlers Market - 10 minutes

Points of interest

Kelham Island Museum - 2 minutes

The Foundry Climbing Centre - 7 minutes

Sheffield Train Station - 20 minutes

Shopping

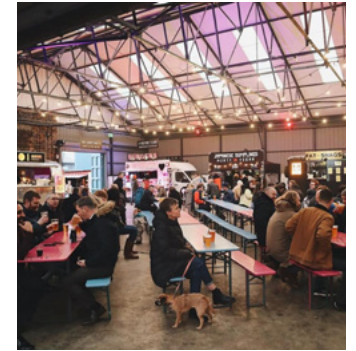
Kelham Deli - 4 minutes

Kelham Island books - 4 minutes

Kelham Arcade - 10 minutes

Tesco - 11 minutes

Approximate timings, by foot





Sustainability

Bold & innovative, we don't just talk about being sustainable – we live and breathe it

We're at the start of a journey to create a ripple effect through the UK house-building industry by delivering homes through a sustainable and low carbon process.

Energy systems: Kelham Central has been designed differently, challenging convention, disrupting design codes and using modern methods of construction which dramatically reduce embedded and operational carbon.

Buildings: The Citu home has been designed using Passivhaus tools and is built in our state of the art manufacturing facility on site at Kelham Central. Triple glazing, serious amounts of insulation, an obsession with air tightness and an MVHR system means that the residual heating need is met by electric heating running on energy from 100% renewable sources.

Kelham Cube Terrace

Available from £260,000

Kelham Central, Sheffield

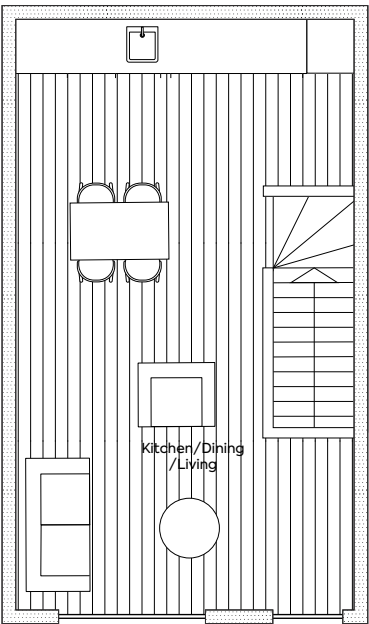
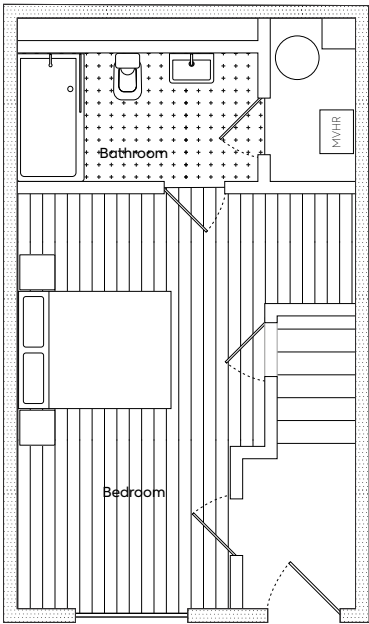
Our design principles lead us to create boldly contemporary one bed houses that are beautifully timeless. Light, space and connection to outside space have all been considered.

SQ FT
652.3

FLOORS
2

BEDROOMS
1

BATHROOMS
1



Mandatory

+ £3,500 Community Interest Company share

Flooring

Light, Engineered Oak flooring in Hall, Stairs, Living

GROUND FLOOR

Bedroom One	4142	x	5210	mm
Bathroom	3010	x	2023	mm
Store	1000	x	2023	mm
Hall	1352	x	1841	mm

FIRST FLOOR

Kitchen /Living/ Dining	4128	x	7370	mm
		x		
		x		
		x		



Kelham Cube Terrace

Specifications

		Included	Optional Extra			Included	Optional Extra
Home	Painted white throughout	•		Kitchen	Silestone worktops white	•	
	Nest Control System	•			Unit doors matte finish white	•	
Bathrooms	Porcelain tiles Light Grey	•		Appliances	Mixer tap	•	
	Fitted mirrors with plywood reveal	•			Stainless steel sink	•	
	Ceramic basin white	•			Induction hob	•	
	Wall-mounted ceramic WC	•			Canopy Hood Extractor	•	
	Bath white	•			Fan assisted oven	•	
	Contemporary shower controls	•			Dishwasher	•	
	Bath screen with easy clean coating	•			Fridge freezer	•	
	Toughened glass shower screen with easy clean coating	•		Flooring	50/50 diamond bay wool blend textured carpet, in bedroom and stairs	•	
	Contemporary mixer tap	•			Light, Engineered Oak flooring in Hall, Stairs, Living	•	
	Heated towel rail	•					
Electrical	White electrical sockets plastic	•					
	White wall lights	•					

Specifications and option choices are dependant on the time between reservation and completion. Where a reservation is made close to completion of a plot then it is not possible to make specification and option choices.

Any specification and option choices that are made need to be guaranteed with an exchange of contracts or a non-refundable deposit. Please speak to your sales specialist for more information.