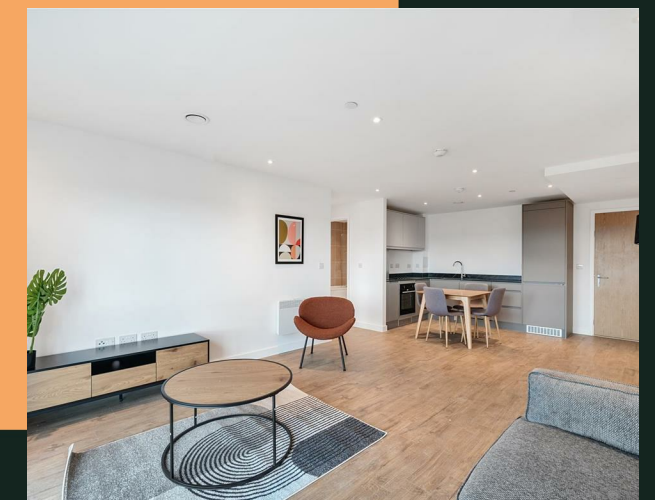
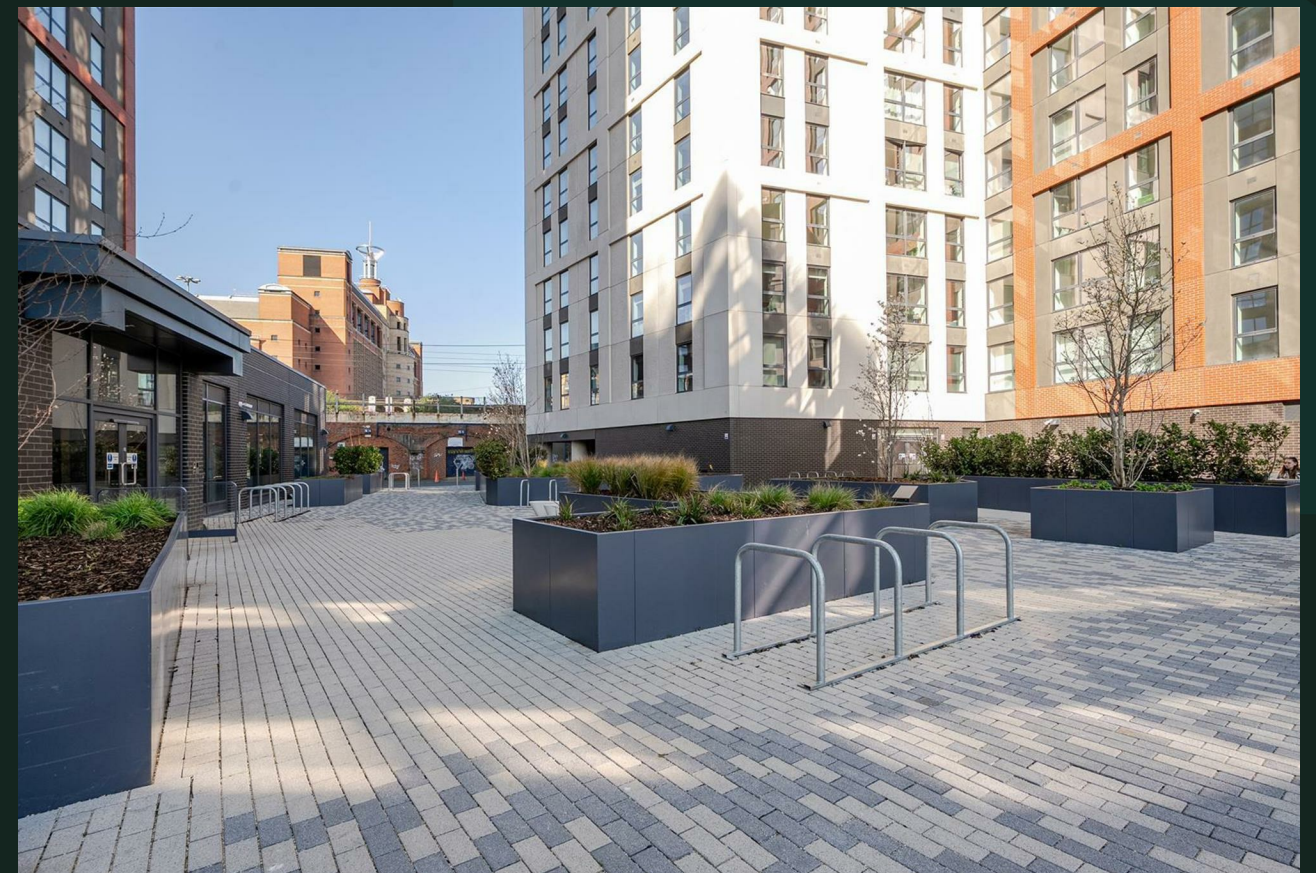


Saxton Lane, LS9

PROPERTY ADDRESS
B1008
Phoenix Saxton Lane
Leeds
LS9 8GG

Energy Efficiency Rating		
	Current	Potential
Very energy efficient - lower running costs		
(92 plus) A		
(81-91) B	85	85
(69-80) C		
(55-68) D		
(39-54) E		
(21-38) F		
(1-20) G		
Not energy efficient - higher running costs		
England & Wales	EU Directive 2002/91/EC	



Call Us
01132440251

Email Us
leeds@vision-properties.co.uk

vision

We look at
estate agency
differently.

vision

- Available now
- Brand new apartment
- Furnished
- Concierge
- Gym for residents

We're pleased to offer the first chance to rent at this fantastic new build development. This spacious tenth floor apartment provides luxurious and contemporary living in the new landmark development at Phoenix.

The apartment is furnished and briefly comprises a bright and airy open plan living, kitchen and dining area with integrated appliances, two double bedrooms, one with an ensuite, and a main bathroom. The property benefits from high spec fixtures and fittings throughout and has floor-to-ceiling windows with stunning views of the Leeds skyline.

Phoenix is close to all the amenities and transport links of the city centre. The development offers numerous facilities for residents including a concierge service, state of the art gym and communal courtyard.

Available now subject to acceptable referencing.

Rent: £1,375 per calendar month
Holding deposit: £317.30
Deposit: £1,586.53



Your Text Here

