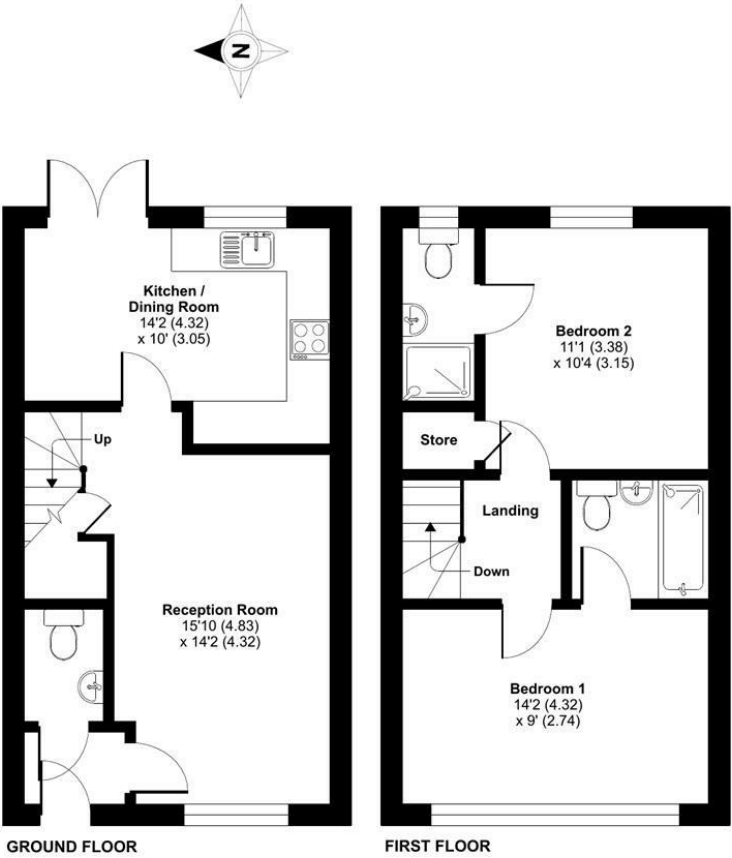


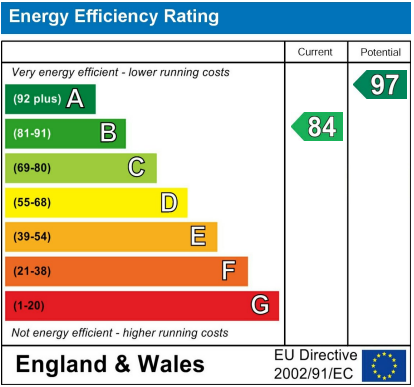
Armitage Place, Leeds, LS12

Approximate Area = 756 sq ft / 70.2 sq m
For identification only - Not to scale



Floor plan produced in accordance with RICS Property Measurement 2nd Edition, incorporating International Property Measurement Standards (IPMS2 Residential). © richcom 2025. Produced for Vision Properties. REF: 1264067

PROPERTY ADDRESS
16 Armitage Place
Leeds
LS12 5FD



Armitage Place, LS12



Call Us
01132440251

Email Us
leeds@vision-properties.co.uk

vision

We look at
estate agency
differently.

vision

- Brand new two bedroom end terrace Redrow home
- Sought after New Farnley location on Whitehall Grange development
- Easy to maintain rear garden
- Driveway parking for two cars, plus electric vehicle charging point

