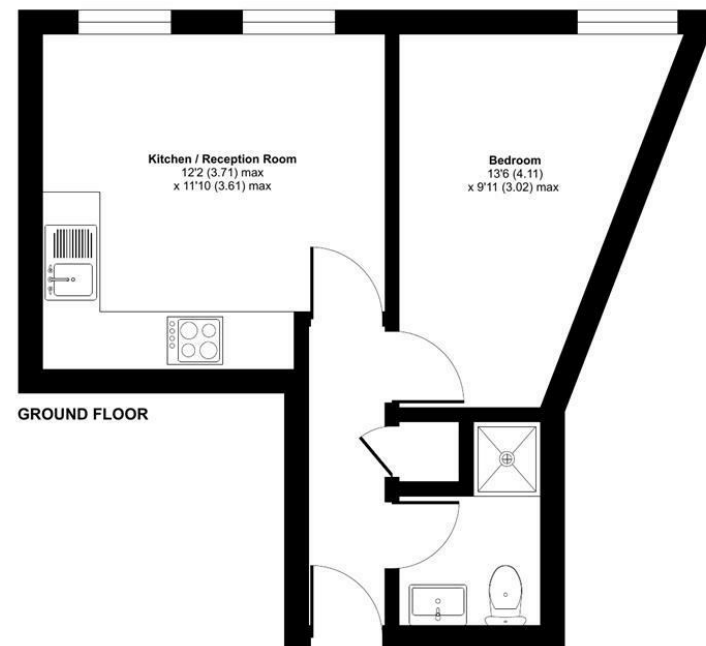




North Street, Leeds, LS2


Approximate Area = 307 sq ft / 29 sq m
For identification only - Not to scale



Floor plan produced in accordance with RICS Property Measurement Standards incorporating International Property Measurement Standards (IPMS2 Residential). © nichcom 2022. Produced for Vision Properties. REF: 626658

PROPERTY ADDRESS

Apartment 1, North
Street Lofts 88 North
Street
Leeds
LS2 7PN

Energy Efficiency Rating		
	Current	Potential
Very energy efficient - lower running costs		
(92 plus) A		
(81-91) B		
(69-80) C		
(55-68) D	67	67
(39-54) E		
(21-38) F		
(1-20) G		
Not energy efficient - higher running costs		
England & Wales	EU Directive 2002/91/EC 	

88 North Street, LS2



Call Us
01132440251

Email Us
leeds@vision-properties.co.uk

vision

We look at
estate agency
differently.

vision

- INVESTORS - 7.6% YIELD. CURRENTLY LET FOR £795 PCM until OCT 2025
- LS2 LOCATION
- CLOSE TO VICTORIA GATE SHOPPING CENTRE
- EWS1 - B1 Rating
- LET UNTIL OCTOBER 2025

INVESTORS - 7.6% YIELD. CURRENTLY LET FOR £795.00 PCM until OCT 2025.

We are delighted to offer this STUNNING one bed apartment at the North Street Lofts development in the northern quarter of Leeds city centre, just 5 minutes walk from Victoria Gate.

The property briefly comprises: light and airy open plan kitchen/living area with integrated Hotpoint appliances, contemporary bathroom with stylish fixtures/fittings and Rango Earth Grey tiles and double bedroom with ash grey carpets and ample storage facility.

The property also benefits from its own designated bicycle storage and lockable storage room on the ground floor.

North Street Lofts is a unique apartment development in the vibrant northern quarter of Leeds City Centre, a short walk from the bustling nightlife in and around Merrion Street, with bars and restaurants such as: Belgrave, Manahatta, Brewdog, Brotherhood, and Mojo.

The northern quarter is also home to the 'Victoria Gate' shopping centre (home to John Lewis and other major retailers) in addition to the numerous other shops, restaurants and bars recently opened in this exciting area of Leeds City Centre.

Images are for illustrative purposes.

Leasehold information:

125 years from August 2016
Ground Rent - £300.00 per annum
Service Charge - £1,951.74 per annum (including building insurance)



1 bedroom
Apartment
£125,000

Council Tax band B

Please note, some of furniture in the images have been digitally staged.

