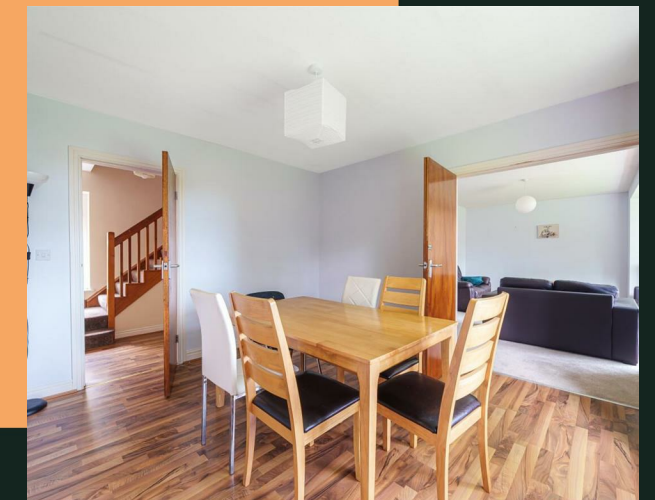


Blackman Lane, LS2



PROPERTY ADDRESS
Room 2
26 Blackman Lane
Leeds
LS2 9EY

Energy Efficiency Rating		Current	Potential
Very energy efficient - lower running costs			
(92 plus) A			
(81-91) B			81
(69-80) C		70	
(55-68) D			
(39-54) E			
(21-38) F			
(1-20) G			
Not energy efficient - higher running costs			
England & Wales	EU Directive 2002/91/EC		

Call Us
01132440251

Email Us
leeds@vision-properties.co.uk

vision

We look at
estate agency
differently.

vision

- Available now
- Furnished
- Room in student house share
- Garden
- Garage

This well-located and spacious student house comes furnished and briefly comprises a good size double bedroom, two reception rooms, a large separate kitchen and WC on the ground floor. There are three bedrooms on the first floor, a house bathroom and separate WC. The property benefits from a driveway for multiple cars, a garage and has a private garden. Situated in a highly desirable location just behind Leeds Student Medical Practice and just off the popular Blenheim Square, the property is a short walk to both the University of Leeds and Leeds Beckett University, and the city centre.

Available immediately subject to acceptable referencing.

Rent includes gas, electric, water and internet.

Rent: £525 per calendar month for a double room in this house share
Deposit: £605.76
Holding deposit: £121.15

