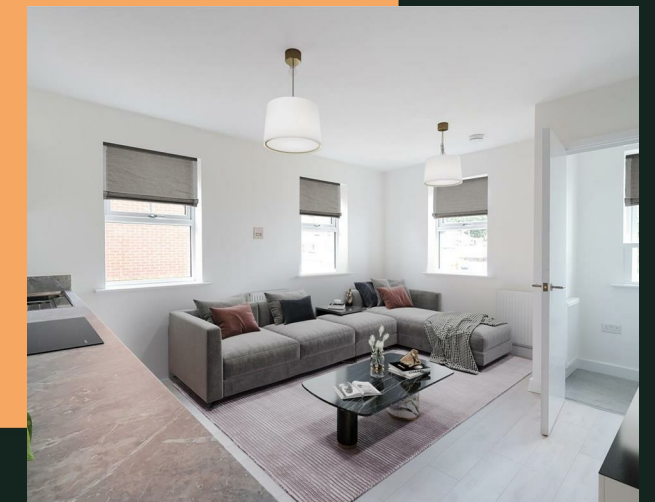
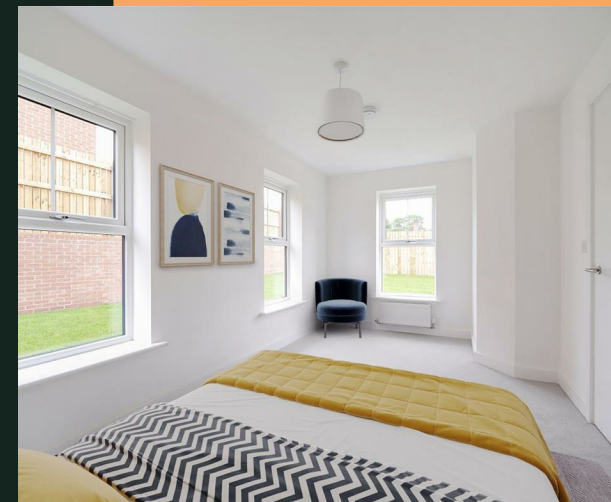


# Iris Crescent, LS14

PROPERTY ADDRESS  
17 Iris Crescent  
Seacroft  
Leeds  
LS14 6WY

Energy Efficiency Rating		Current	Potential
Very energy efficient - lower running costs			98
(92 plus) A			
(81-91) B		84	
(69-80) C			
(55-68) D			
(39-54) E			
(21-38) F			
(1-20) G			
Not energy efficient - higher running costs			
England & Wales		EU Directive 2002/91/EC	



Call Us  
01132440251

Email Us  
leeds@vision-properties.co.uk

vision

We look at  
estate agency  
differently.

vision



- New build
- Unfurnished
- Available immediately
- Great location

We're pleased to offer the first chance to rent at this fantastic new build home. The townhouse briefly comprises a ground floor double bedroom, downstairs house bathroom, first floor open plan living, kitchen and dining area, and second floor double bedroom with ensuite. The property is unfurnished but comes with washing machine, hob/oven and window dressings.

It's in a great location just off the York Road with easy access to Cross Gates and the city centre.

Available immediately, pending acceptable referencing.

Rent: £1,100 per calendar month  
Deposit: £1,269.23  
Holding deposit: £253.84

Council tax: TBC as new build home.

Please note that the furniture shown in the photos is for illustrative purposes only and do not come with the property. The property comes unfurnished.



Your Text Here

