
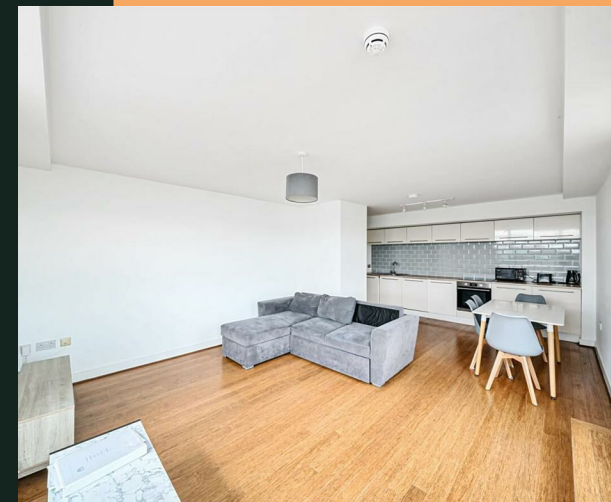


Beeston Road, LS11

PROPERTY ADDRESS
Greenhouse
503a Beeston Road
Leeds
LS11 6AP

Energy Efficiency Rating		Current	Potential
<i>Very energy efficient - lower running costs</i>			
(92 plus) A			
(81-91) B		81	81
(69-80) C			
(55-68) D			
(39-54) E			
(21-38) F			
(1-20) G			
<i>Not energy efficient - higher running costs</i>			
England & Wales		EU Directive 2002/91/EC 	



Call Us
01132440251

Email Us
leeds@vision-properties.co.uk

vision

We look at
estate agency
differently.

vision

- Available immediately
- Fully furnished
- On-site gym
- Close to city centre

Property available immediately depending on referencing
Situating in the newly regenerated Beeston Road area of Leeds, the Greenhouse development is close to the motorway networks and also benefits from great bus, cycle and walking links into the city centre.
This spacious apartment has an open-plan kitchen, living and dining area, integrated kitchen appliances, three large double bedrooms, one main bathroom and an ensuite. It also has access to the on-site gym.

Rent: £1,275
Deposit: £1,471.15
Holding deposit: £294.23
Council Tax Band A



Your Text Here

