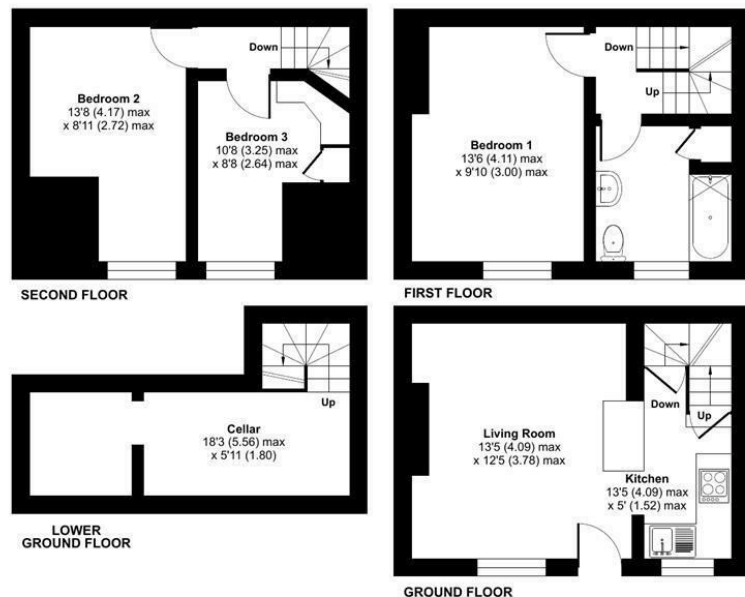


Autumn Street, Leeds, LS6

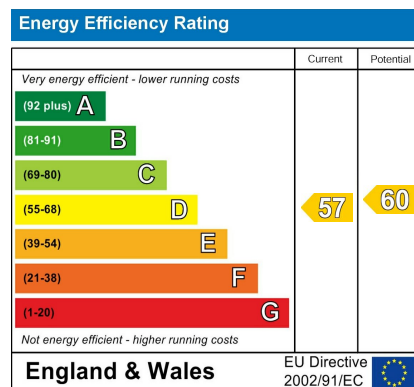
Approximate Area = 863 sq ft / 80.1 sq m

For identification only - Not to scale

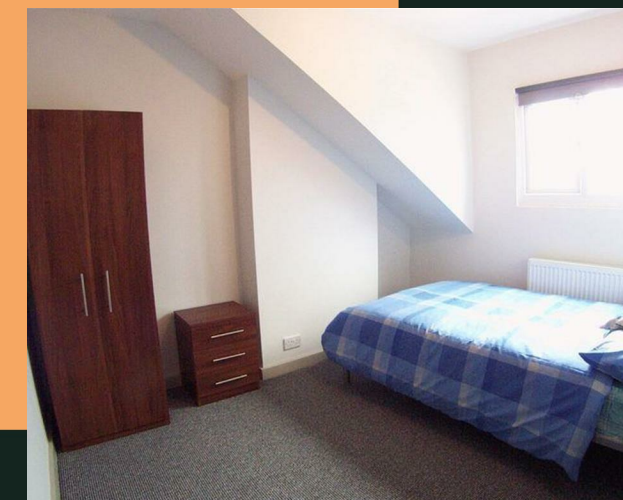


Certified Property Measurer
 Floor plan produced in accordance with RICS Property Measurement Standards incorporating International Property Measurement Standards (IPMS2 Residential). © nichicom 2022. Produced for Vision Properties. REF: 916996.

PROPERTY ADDRESS
 29a Autumn Street
 Leeds
 LS6 1RH



Autumn Street, LS6



Call Us
 01132440251

Email Us
 leeds@vision-properties.co.uk

vision

We look at estate agency differently.

vision

- To let from September 2024
- Double bedrooms
- Full Furnished
- Popular location

Close to local transport routes and a short walk to Burley Park train station. Within a short walking distance of Sainsburys and Hyde Park Picture House with easy access into the city city centre, Hyde Park Corner & Headingley.

Available early September 2024 for both students or professionals

Rent - £1150
Deposit - £1326.92 per person
Holding deposit - £265.38 per person

Council Tax band A



Your Text Here

