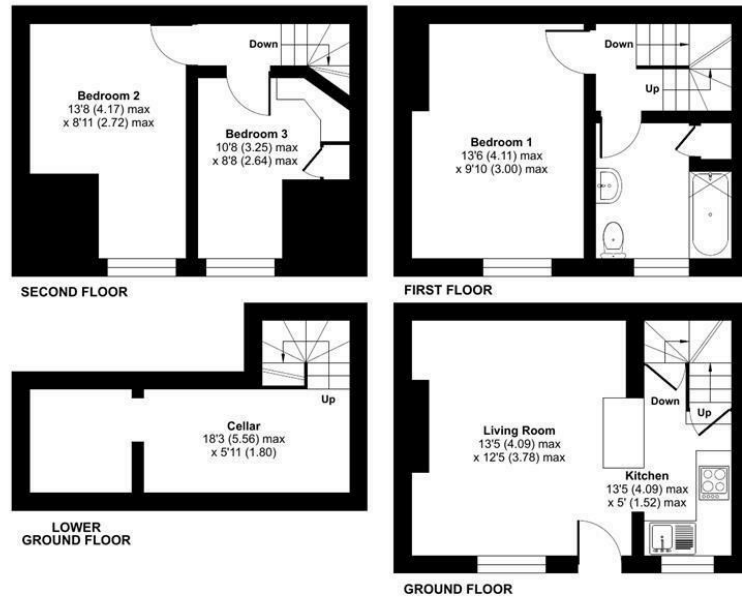


## Autumn Street, Leeds, LS6

Approximate Area = 863 sq ft / 80.1 sq m

For identification only - Not to scale



Floor plan produced in accordance with RICS Property Measurement Standards incorporating International Property Measurement Standards (IPMS2 Residential). © nichicom 2022. Produced for Vision Properties. REF: 916996.

PROPERTY ADDRESS  
 27 Autumn Street  
 Leeds  
 LS6 1RH

Energy Efficiency Rating		Current	Potential
Very energy efficient - lower running costs			
(92 plus)	A		
(81-91)	B		
(69-80)	C		
(55-68)	D	57	60
(39-54)	E		
(21-38)	F		
(1-20)	G		
Not energy efficient - higher running costs			
England & Wales		EU Directive 2002/91/EC	

# LS6



Call Us  
 01132440251

Email Us  
 leeds@vision-properties.co.uk

# vision

We look at  
 estate agency  
 differently.

# vision

- Sought after location
- Double bedrooms
- Available September 2024
- Furnished

Close to local transport routes and a short walk to Burley Park train station. Within a short walking distance of Sainsburys and Hyde Park Picture House with easy access into the city city centre, Hyde Park Corner & Headingley.

**\*\*UNIPOL CODE MEMBER\*\***

Rent - £1150  
Deposit - £1326.92 per person  
Holding deposit - £265.38 per person

Council Tax band A



Your Text Here

