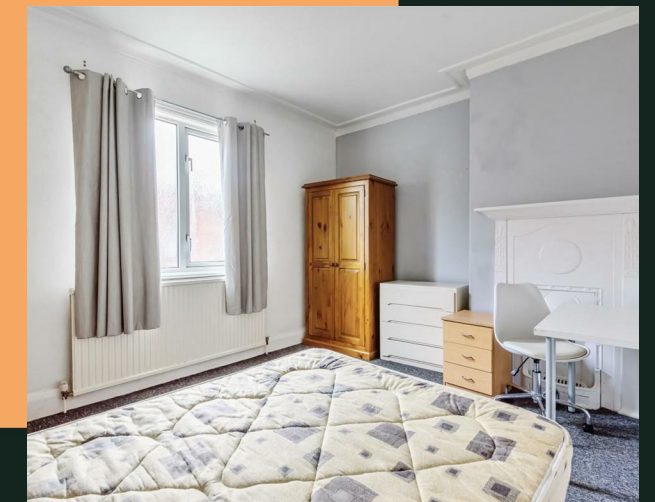


Rokeby Gardens, LS6

PROPERTY ADDRESS
8 Rokeby Gardens
Leeds
Yorkshire
LS6 3JZ

Energy Efficiency Rating		Current	Potential
Very energy efficient - lower running costs			
(92 plus) A			
(81-91) B			83
(69-80) C			
(55-68) D		63	
(39-54) E			
(21-38) F			
(1-20) G			
Not energy efficient - higher running costs			
England & Wales		EU Directive 2002/91/EC	



- Available July 2024
- Superb location
- 2 bathrooms
- Large house

Ideally located in Headingley, close to many local amenities including a great selection of pubs and restaurants. Thai Sabai, The Headingley Taps and the Arndale Centre are just a short walk away. Headingley train station is nearby and there are excellent bus links to Leeds city Centre.

The property has been finished to an high standard throughout and briefly comprises:

Entrance hallway leading to the living area, kitchen/diner, and utility. six large double bedrooms and two bathrooms.

Rent - £90.38 per person per week / £391.66 per person per month / £2350 total per month

Deposit - £451.92 per person / £2711.53.38 total

Holding deposit - £90.38 per person / £ 542.307 total

