



Stoneacre
Properties



Wensley Drive

Chapel Allerton Leeds, LS7 2LU

£325,000



Wensley Drive

Chapel Allerton Leeds, LS7 2LU

£325,000



ENTRANCE PORCH

UVPC entrance porch with frosted double glazed windows, door to inner entrance hall.

ENTRANCE HALL

Bright entrance hall with stairs to first floor, radiator.

LOUNGE

Double glazed window to front aspect, two radiators, sliding glazed door to dining room.

DINING AREA

Open plan kitchen-dining area. Double glazed window to rear aspect, radiator, sliding glazed door to lounge.

KITCHEN

Featuring wall and base units with complimentary work surface, stainless steel sink drainer, freestanding oven with extractor hood, washing machine, under counter fridge, double glazed window to rear, UVPC door to side. Store/utility cupboard with double glazed window to side.

FIRST FLOOR LANDING

Double glazed window, access to three bedrooms and shower room.

BEDROOM ONE

Double glazed window, radiator, built in wardrobes.

BEDROOM TWO

Double glazed window, radiator.

BEDROOM THREE

Double glazed window, radiator.

SHOWER ROOM

Suite comprising shower cubicle, low level WC, wash hand basin, tiled floor, part tiled walls, radiator, frosted double glazed window, extractor fan, loft access.

EXTERNAL

Externally the property benefits from front and rear gardens and driveway providing off street parking.



Road Map



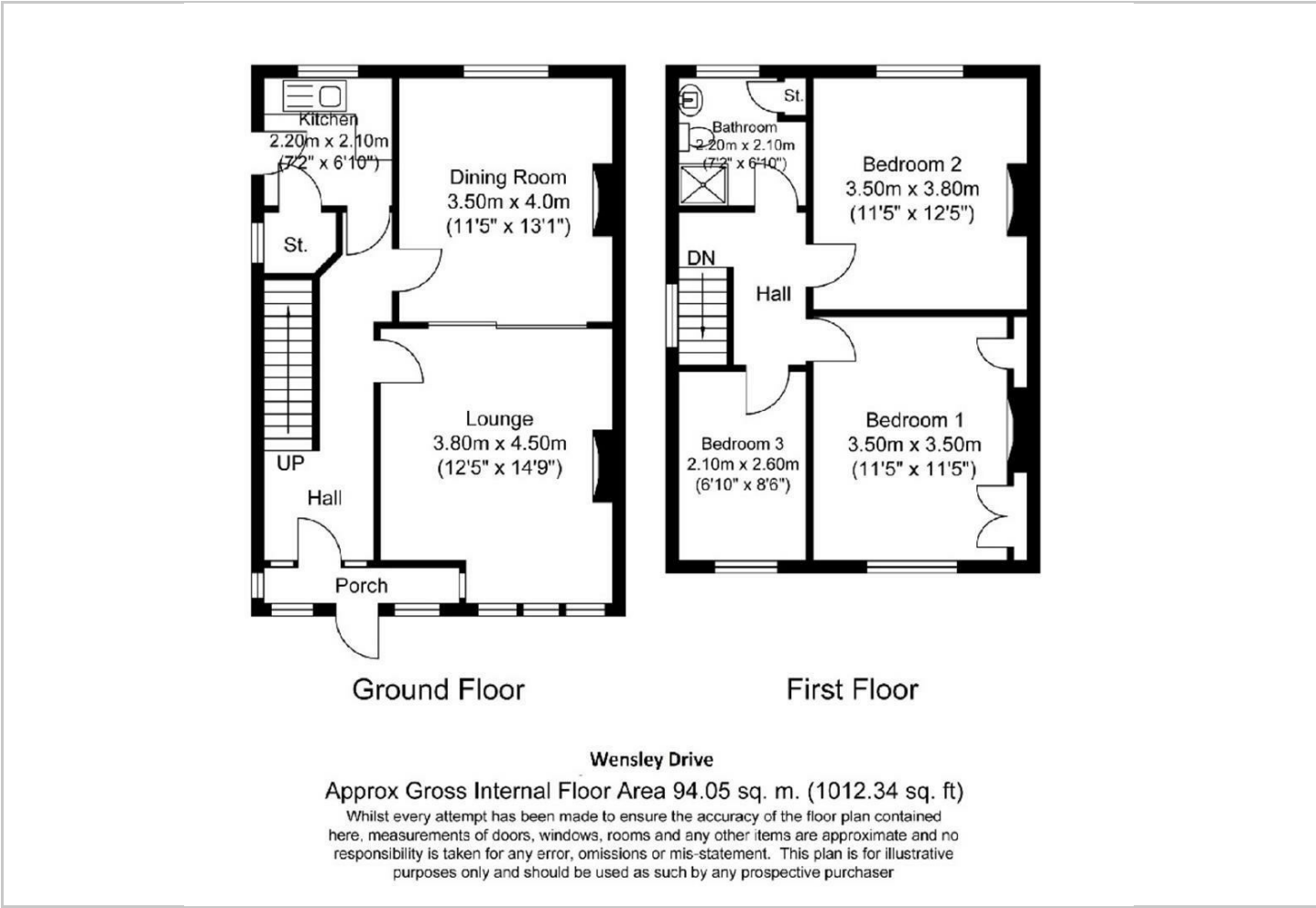
Hybrid Map



Terrain Map



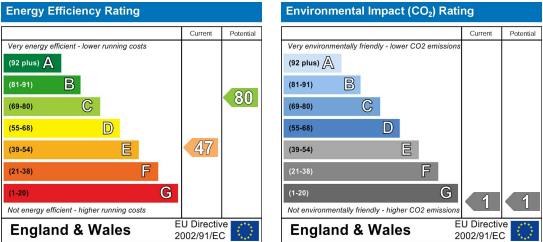
Floor Plan



Viewing

Please contact our Chapel Allerton Sales Office on 0113 237 0999 if you wish to arrange a viewing appointment for this property or require further information.

Energy Efficiency Graph



These particulars, whilst believed to be accurate are set out as a general outline only for guidance and do not constitute any part of an offer or contract. Intending purchasers should not rely on them as statements of representation of fact, but must satisfy themselves by inspection or otherwise as to their accuracy. No person in this firm's employment has the authority to make or give any representation or warranty in respect of the property.