



Stoneacre
Properties



Haddon Place

Leeds, LS4 2JU

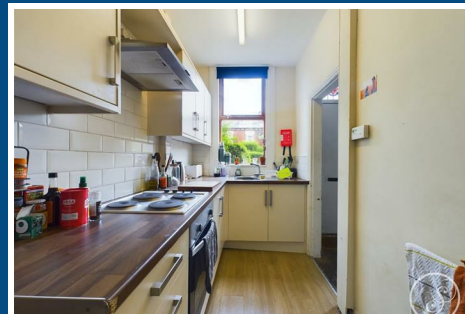
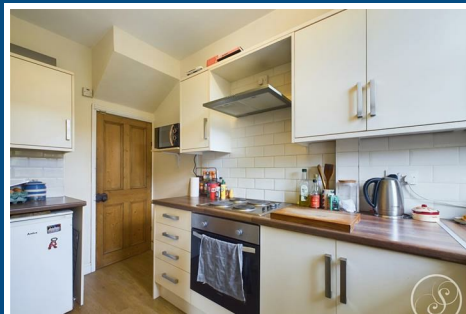
£175,000



Haddon Place

Leeds, LS4 2JU

£175,000



*** 2-BED TERRACE PROPERTY IDEAL FOR FIRST TIME BUYERS OR INVESTORS *** WELL PRESENTED THROUGHOUT *** EASY ACCESS TO THE UNIVERSITIES AND CITY CENTRE *** Stoneacre Properties are delighted to present to market this well presented 2 bedroom mid terrace property in Burley. The property briefly comprises, lounge and kitchen (with access to cellar) to the ground floor, double bedroom and bathroom to the first floor and a double bedroom to the second floor. Externally there is a front courtyard garden and on street parking.

To the front of the property is a courtyard style garden which offers space for outdoor seating.

Entrance/Lounge

Entering the property you are welcomed into the lounge which boasts ample space for seating, a dining area, and offers access to the kitchen.

Kitchen

Kitchen is made up of wall and base units and comprises integrated oven, hob, extractor. Offers access to the cellar.

Cellar

Spacious cellar is ideal for storage and houses the combi boiler and washing machine.

Bedroom

Spacious double bedroom.

Bathroom

Modern bathroom with shower over bath, toilet and sink.

Bedroom

To the second floor is a further second bedroom.

External



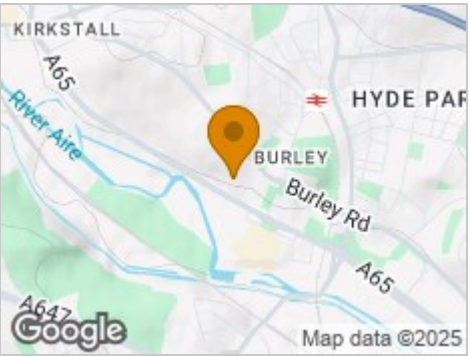
Road Map



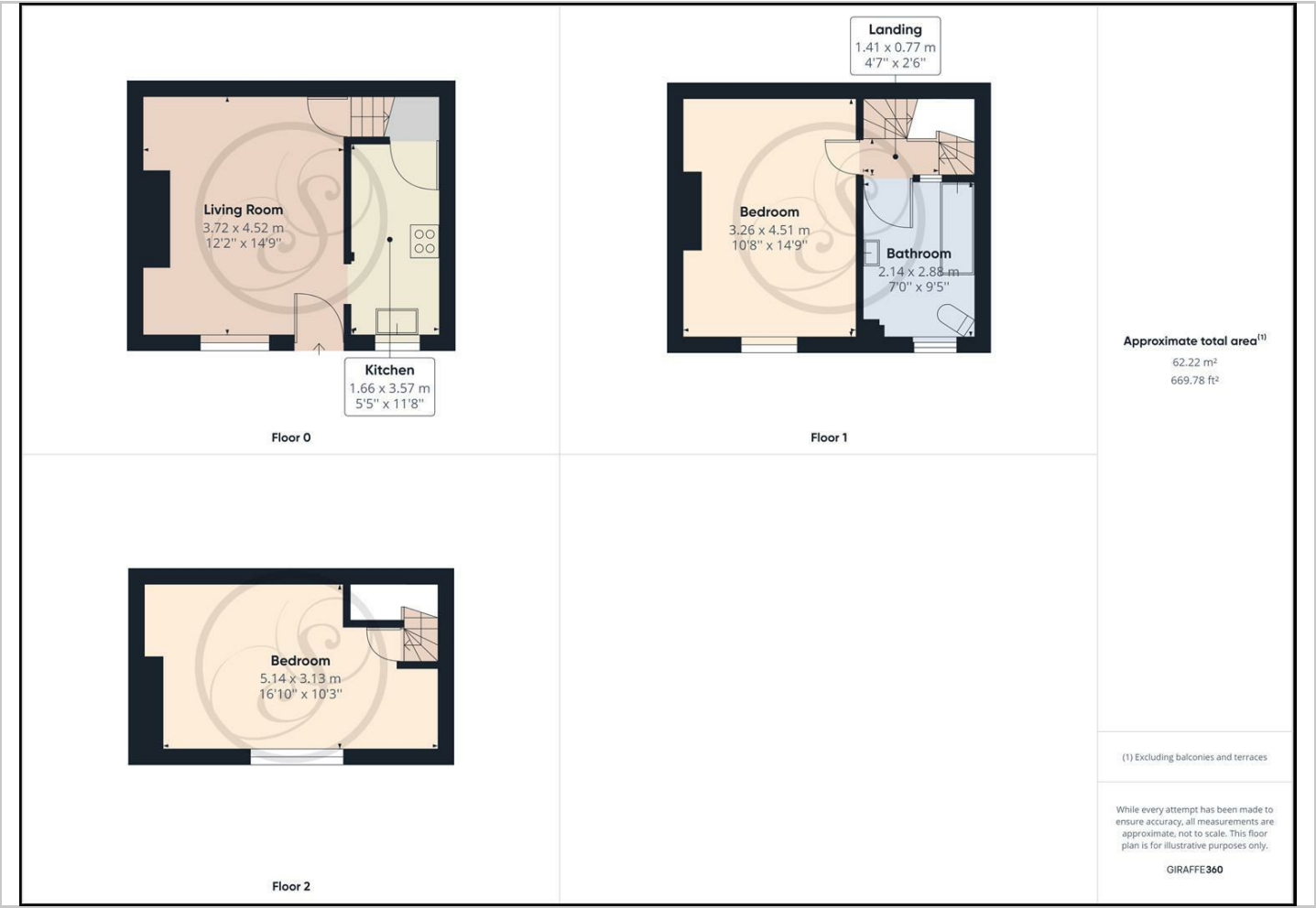
Hybrid Map



Terrain Map



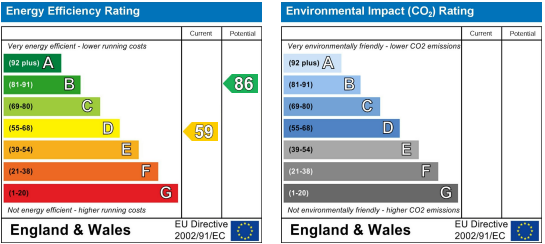
Floor Plan



Viewing

Please contact our Chapel Allerton Sales Office on 0113 237 0999 if you wish to arrange a viewing appointment for this property or require further information.

Energy Efficiency Graph



These particulars, whilst believed to be accurate are set out as a general outline only for guidance and do not constitute any part of an offer or contract. Intending purchasers should not rely on them as statements of representation of fact, but must satisfy themselves by inspection or otherwise as to their accuracy. No person in this firm's employment has the authority to make or give any representation or warranty in respect of the property.