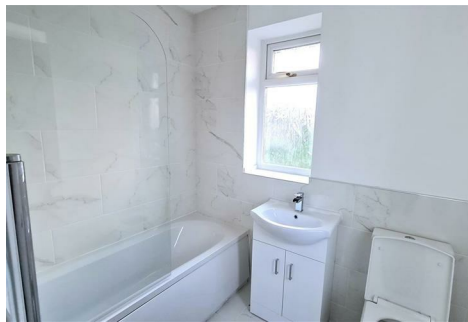




Stoneacre
Properties



Latchmere Drive, Leeds, LS16 5DY

£1,250 Per Calendar Month

Stoneacre Properties are delighted to offer this spacious, three bedroom house to rent on Latchmere Drive. The property boasts three well-proportioned bedrooms, a well-appointed bathroom, and a modern open plan kitchen/ dining room.

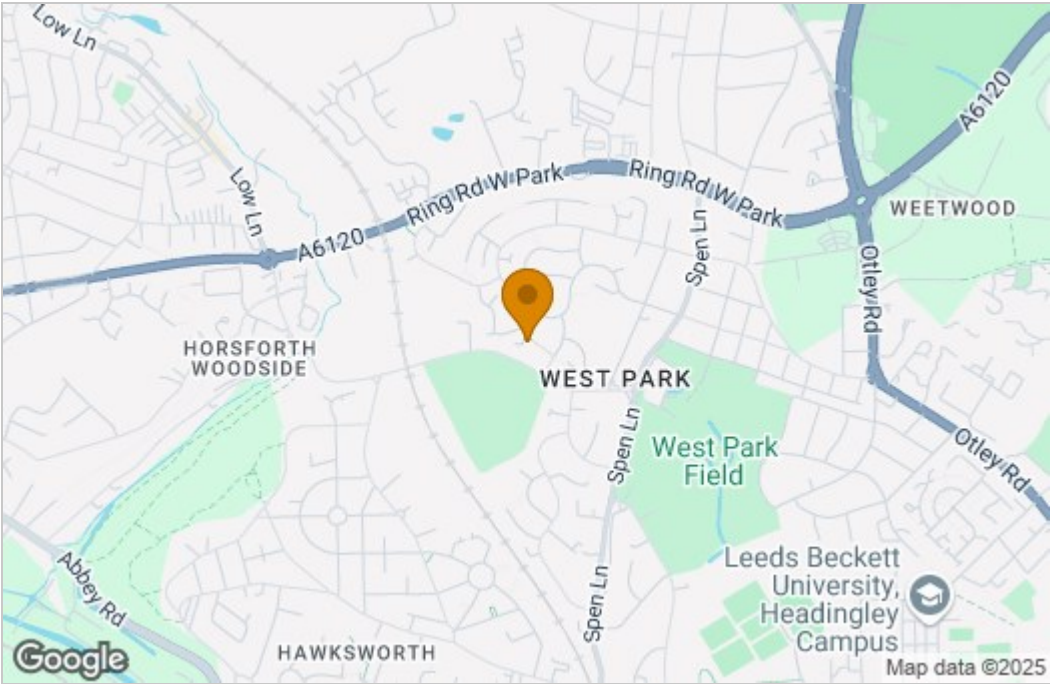
As you enter the property you are welcomed by the entrance hall complete with an under-stair storage cupboard. The hall leads onto a beautiful open plan living/dining kitchen with integrated appliances including a dishwasher, fridge, freezer, washer dryer, induction hob and oven. French doors then lead you to the rear garden with outside storage. Upstairs boast two double bedrooms, a single bedroom and a tiled, house bathroom. to the front of the property is a driveway with space for two vehicles.

Don't miss this opportunity to make this house your home. Enquire now to avoid disappointment.

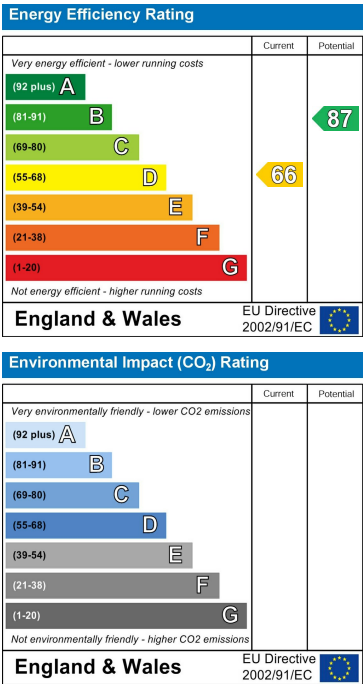
AVAILABLE MID SEPTEMBER 2025

Floor Plan

Area Map



Energy Efficiency Graph



These particulars, whilst believed to be accurate are set out as a general outline only for guidance and do not constitute any part of an offer or contract. Intending purchasers should not rely on them as statements of representation of fact, but must satisfy themselves by inspection or otherwise as to their accuracy. No person in this firm's employment has the authority to make or give any representation or warranty in respect of the property.